

## **COMSOL Installation Guide – Linux**

Download COMSOL53\_dvd.iso from ISTF website under Software category.

Open Terminal (Ctrl+Alt+T)

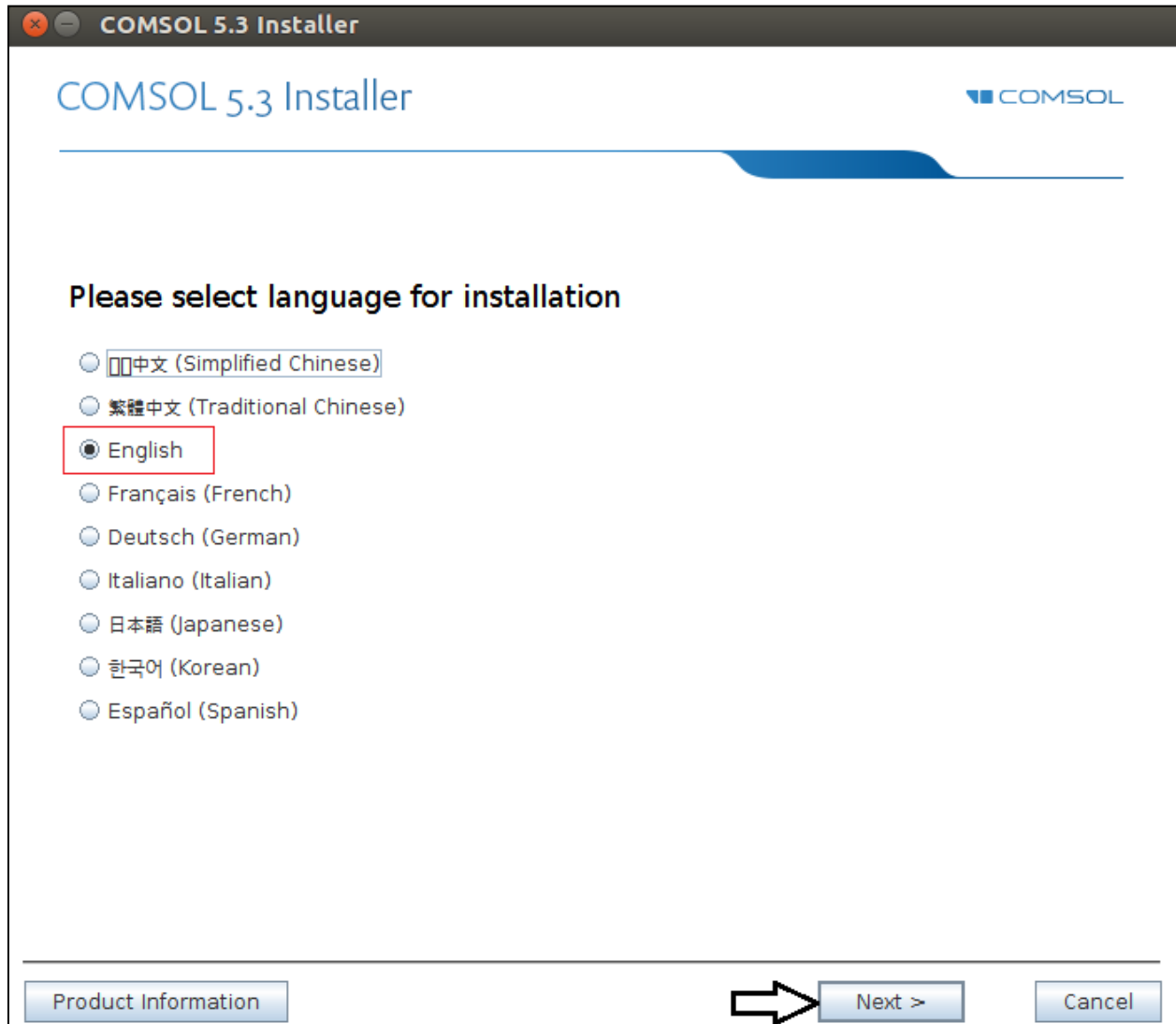
Type bellow commands

```
$ sudo mount -o loop comsol.iso/media
```

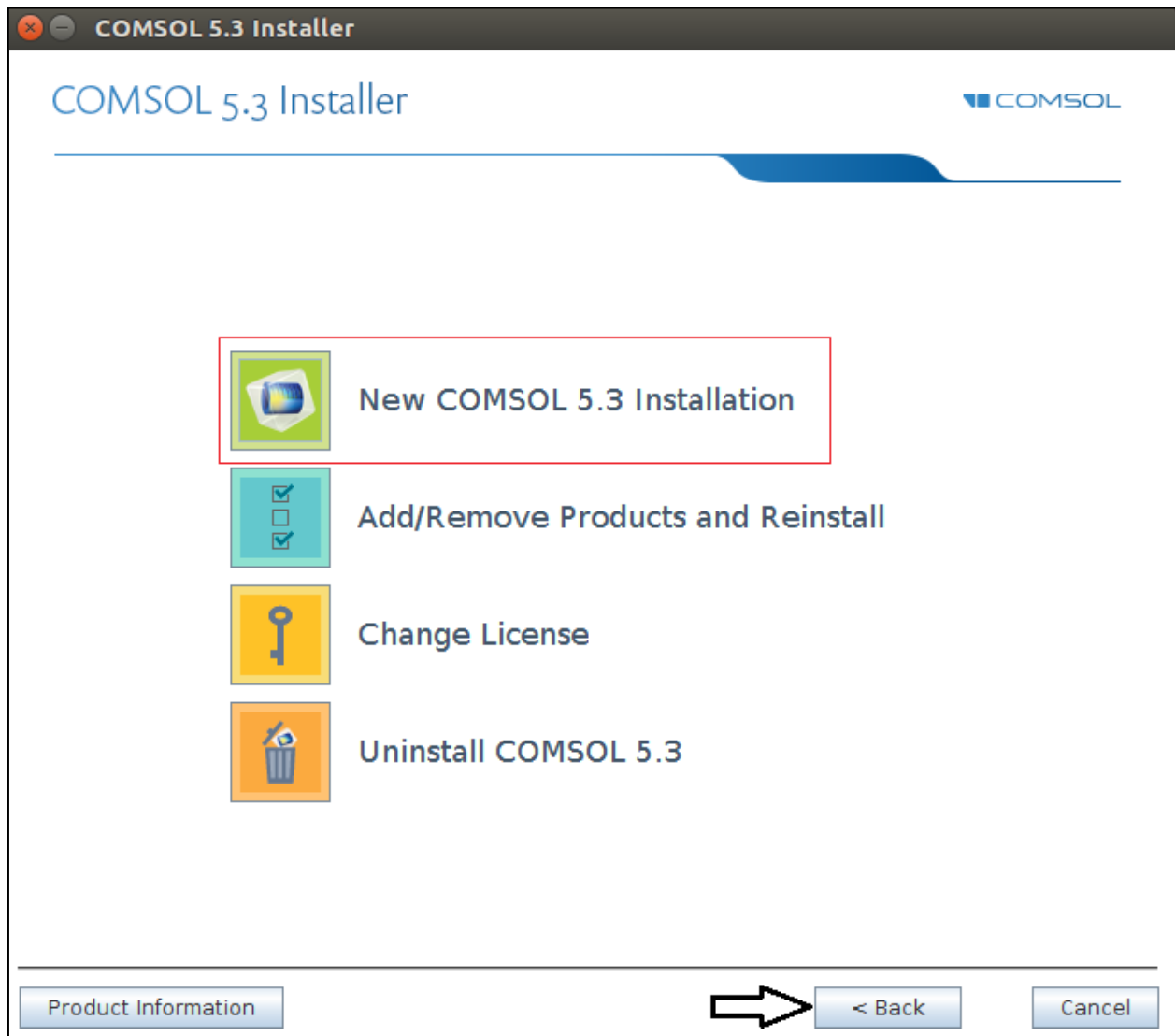
```
$ cd /media
```

```
$ sudo ./setup.
```

Select Language (English) and click Next.



Click on New COMSOL 5.2a Installation.



Enter port number (1718) & Host name (10.0.137.114).

Click on Next.

COMSOL 5.3 Installer

COMSOL 5.3 Installer

License Products Options Install Finish

COMSOL Software License Agreement Version 5.3

CAREFULLY READ THE TERMS AND CONDITIONS BELOW AND IN ANY APPLICABLE ADDENDUM (HEREINAFTER, "TERMS AND CONDITIONS") BEFORE INSTALLING OR USING THE PROGRAMS OR DOCUMENTATION. YOUR RIGHT TO USE ANY PROGRAMS AND DOCUMENTATION IS CONDITIONED ON ACCEPTANCE OF, AND COMPLIANCE WITH, THESE TERMS AND CONDITIONS. INSTALLING OR USING THE PROGRAMS MEANS YOU HAVE ACCEPTED THE TERMS AND CONDITIONS. IF YOU DO NOT ACCEPT THE TERMS AND CONDITIONS, RETURN THE PROGRAMS AND RELATED MATERIAL UNUSED TO YOUR VENDOR FOR A REFUND OR CEASE ANY AND ALL ATTEMPTS TO DOWNLOAD AND INSTALL THE PROGRAMS AND DELETE ANY MATERIAL

I accept the terms of the license agreement and understand and acknowledge that with this acceptance all other terms are rejected

I do not accept the terms of the license agreement

License information

License format: <port number>@<host name>

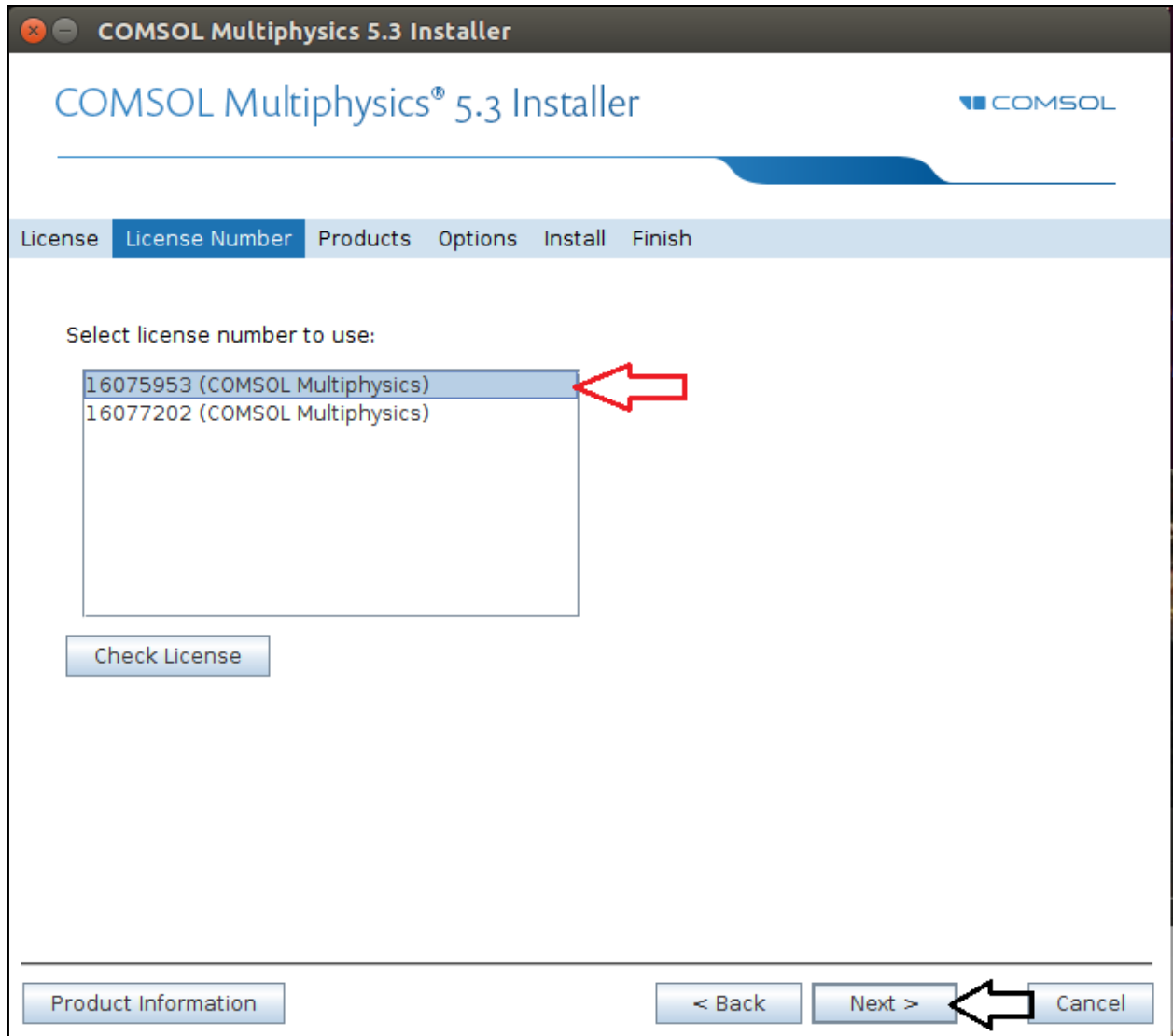
Port number: 1718 Host name: 10.0.137.114 Check

Name: Company:

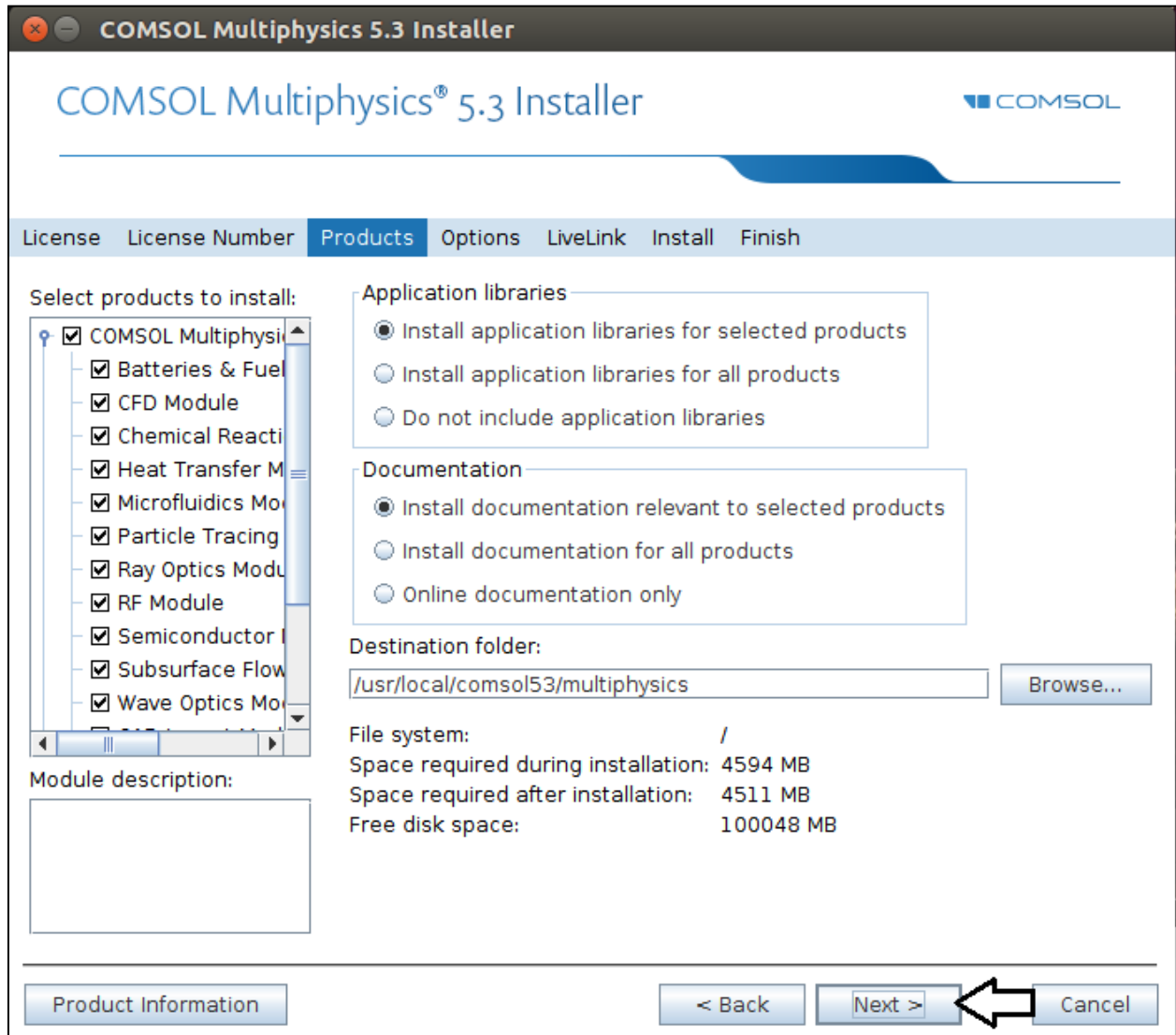
Product Information < Back Next > Cancel

Select License Number.

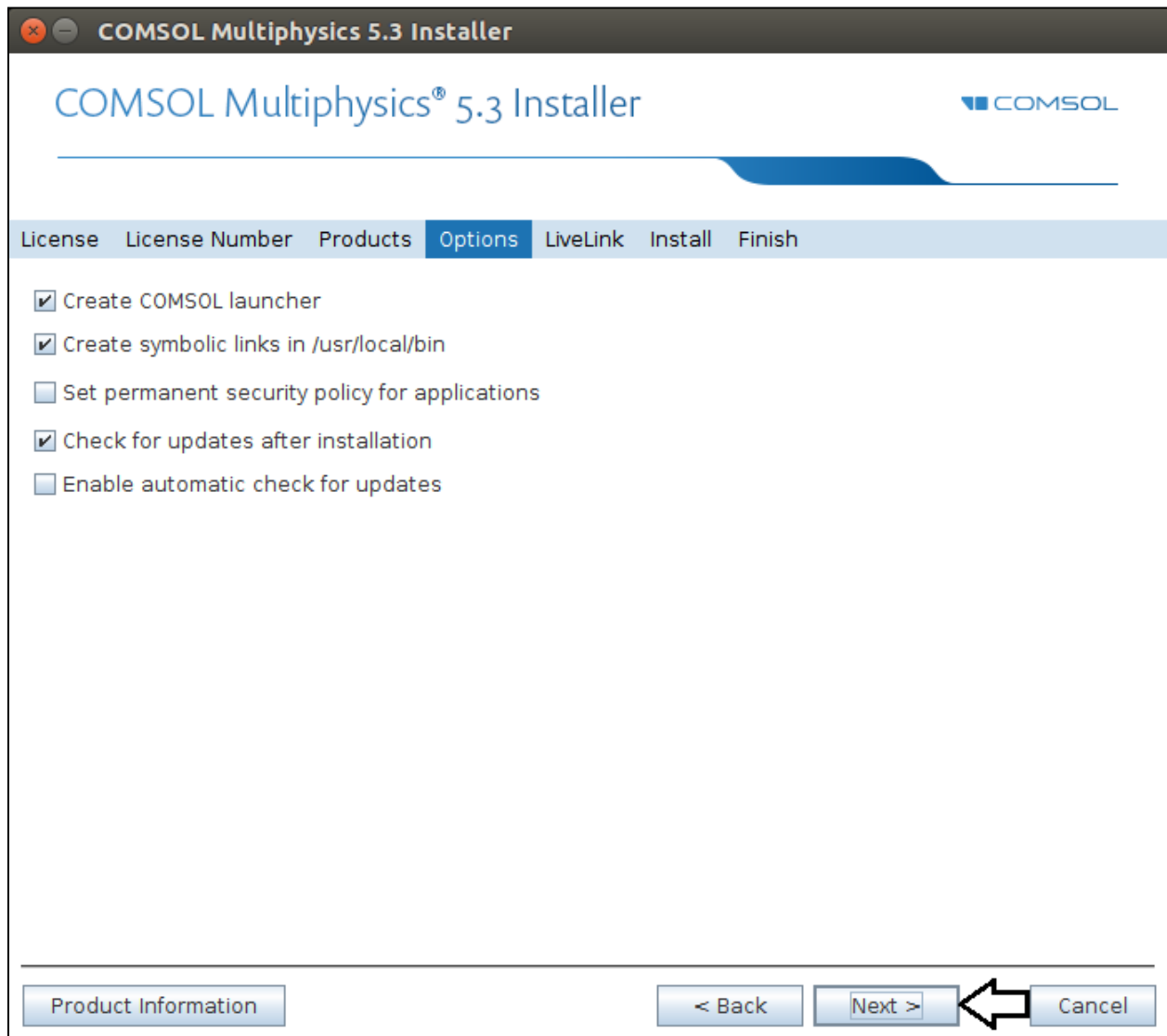
Click on Next.



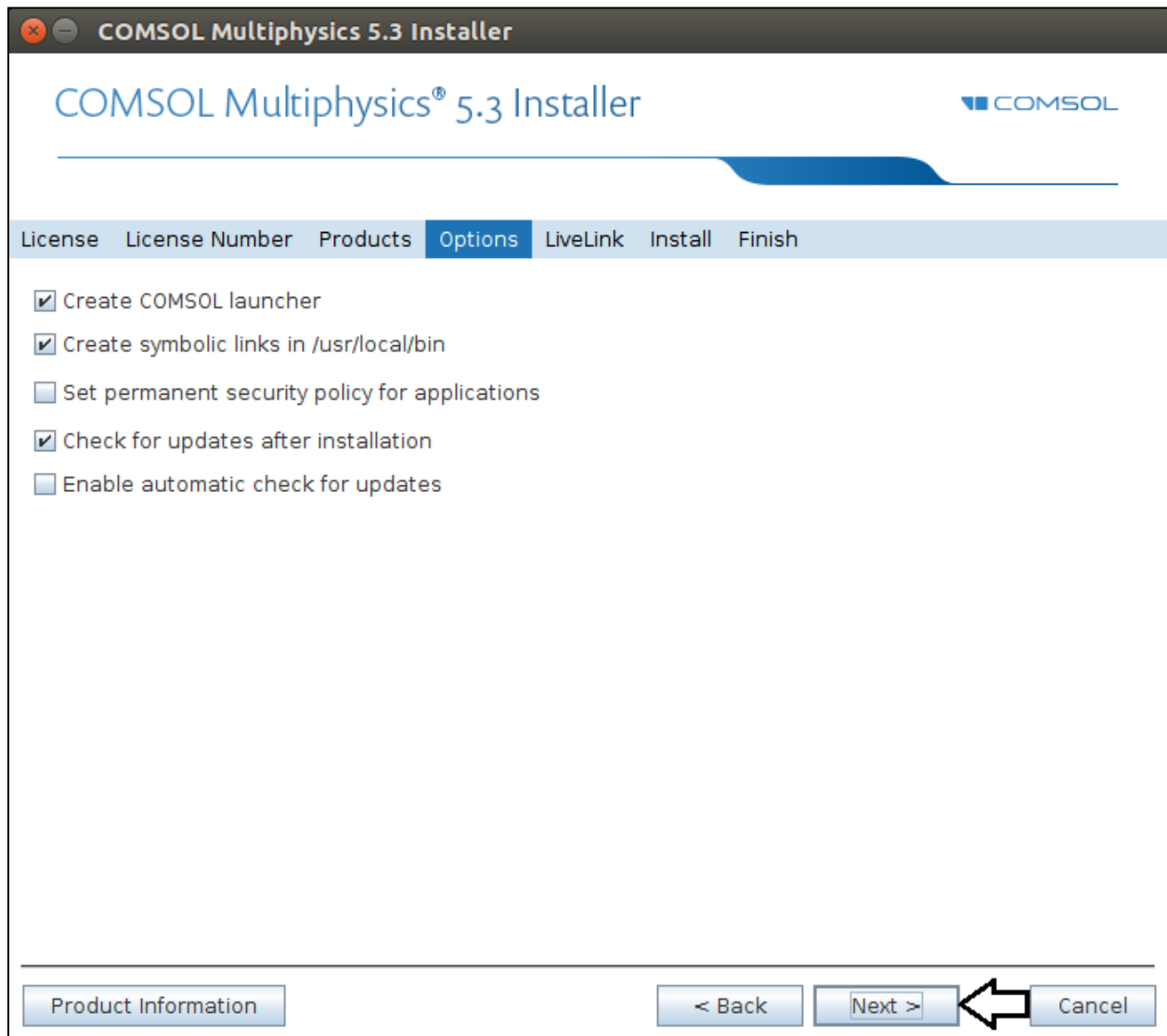
Click on Next.



Click on Next.

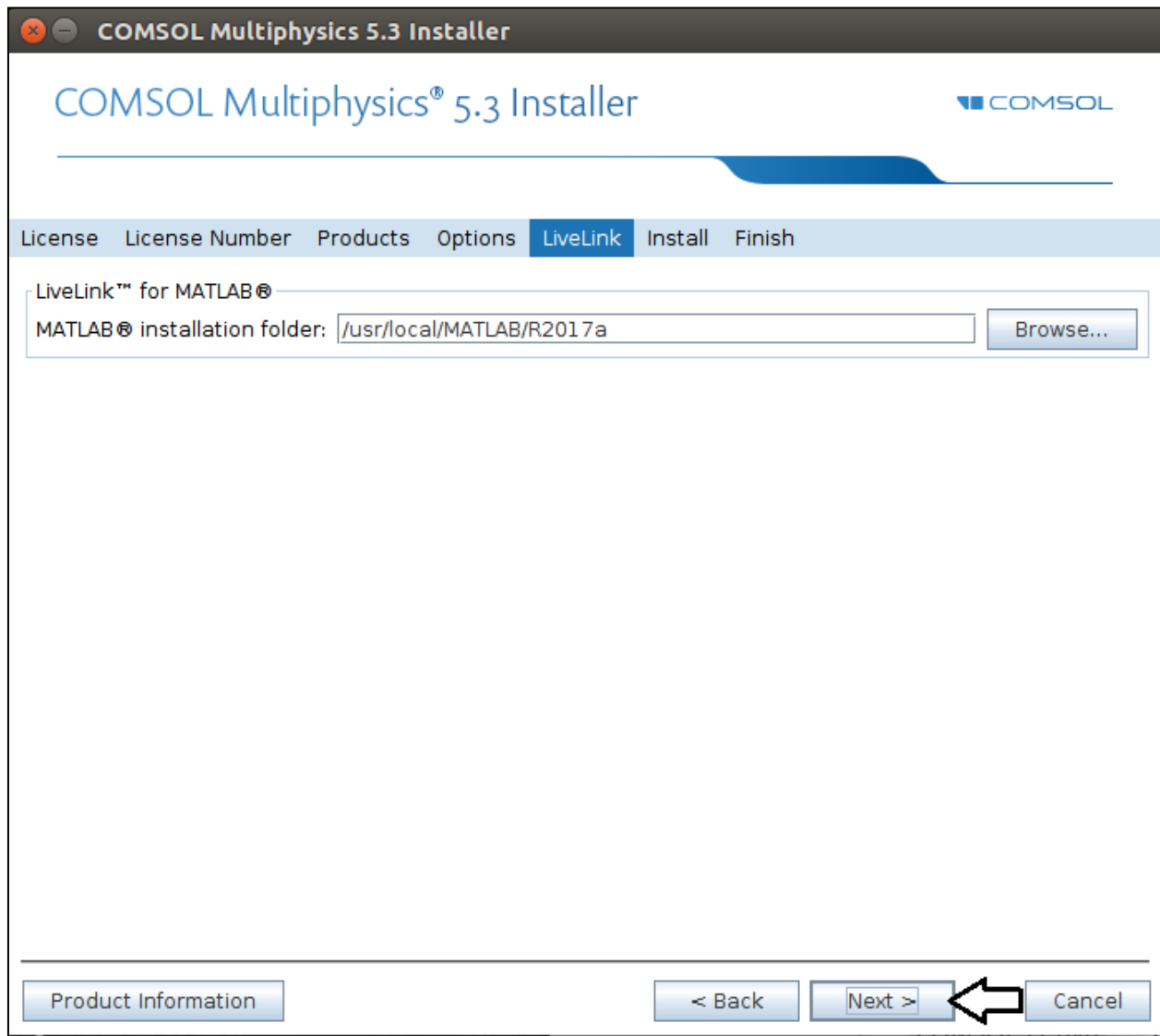


Click on Next.



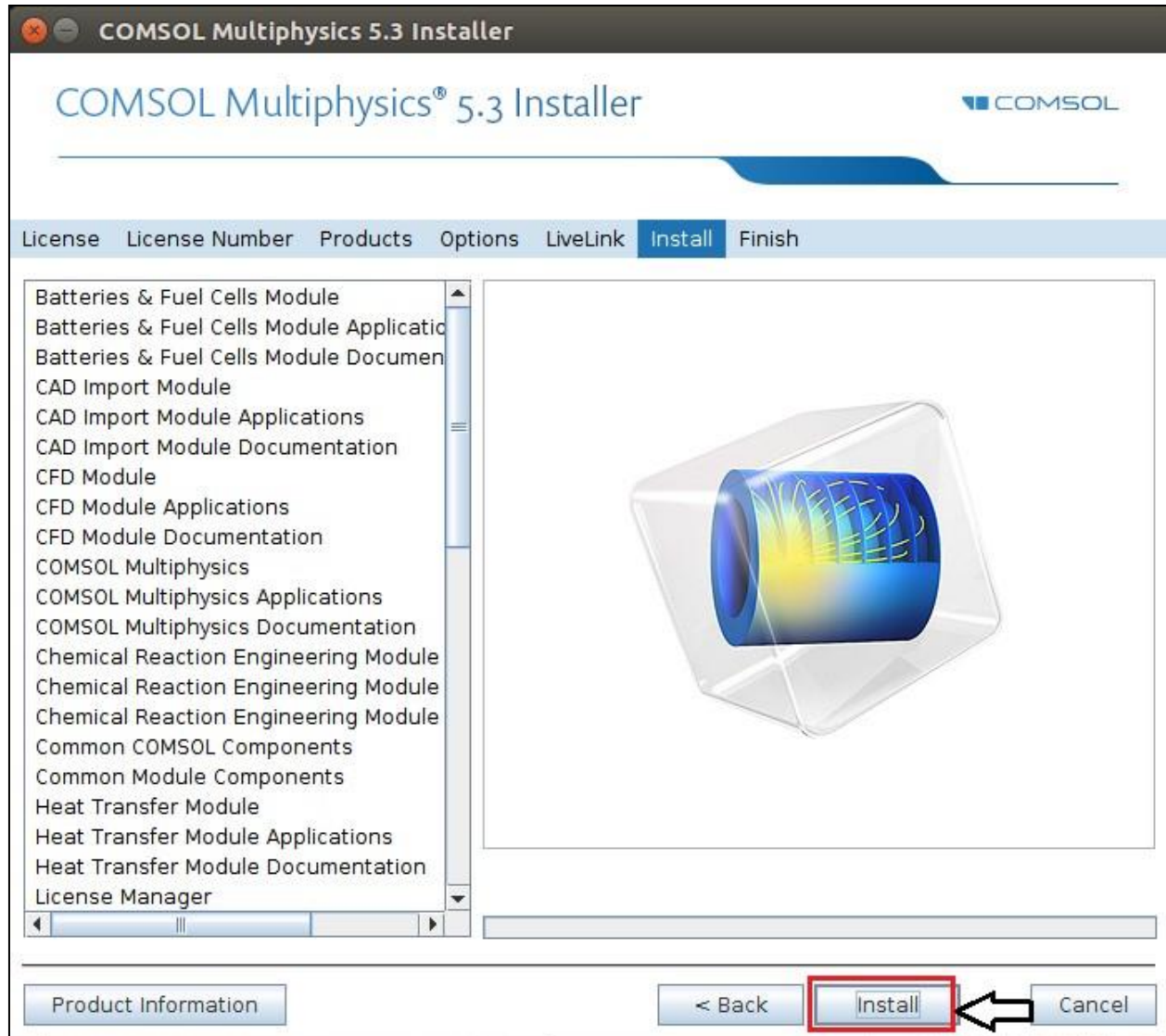


Click on Next.



Click on Install it will take some time.

Click on Install.



Click on Finish & Close.

