

COMSOL Installation Guide – Windows

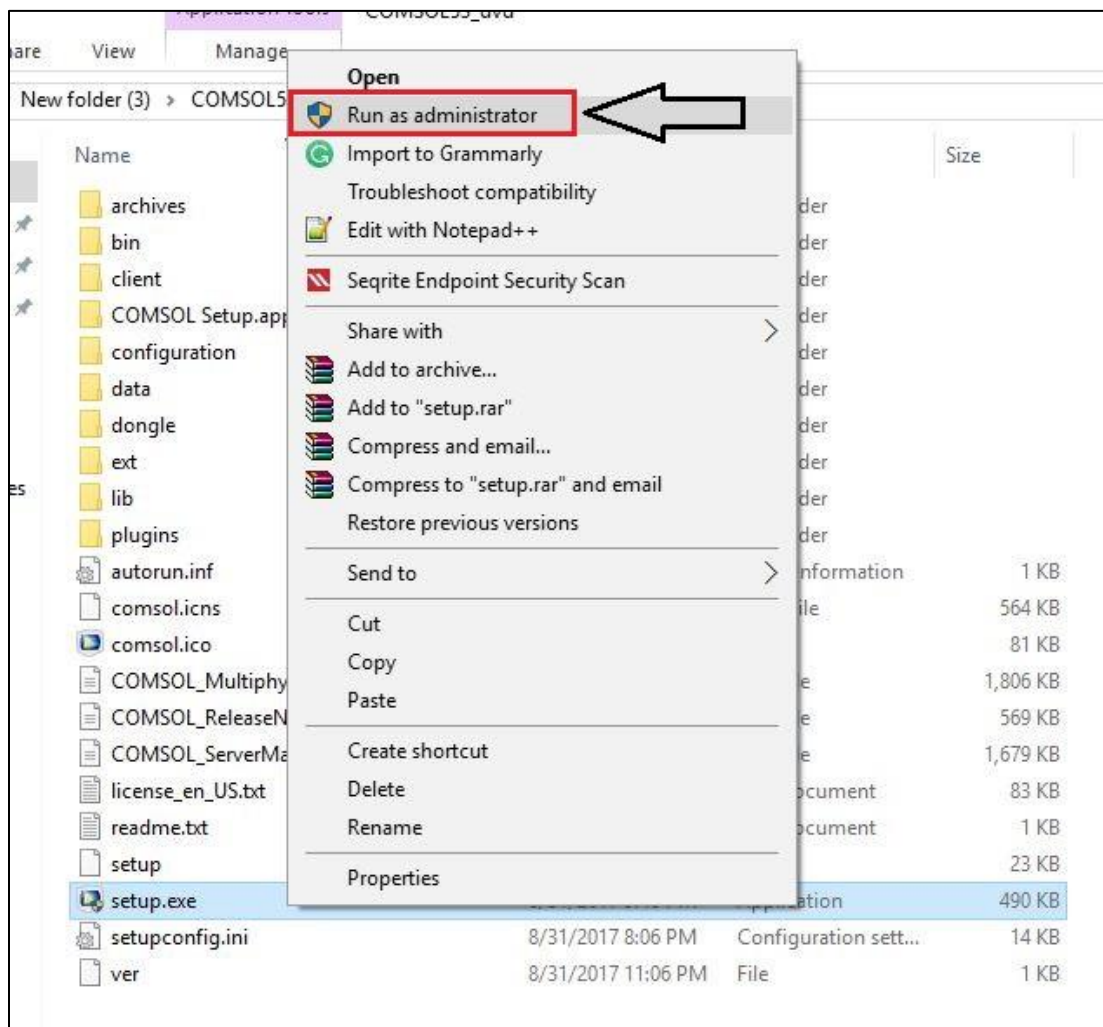
Download COMSOL53_dvd.iso from ISTF website under Software category.

Extract the downloaded iso file on your local system.

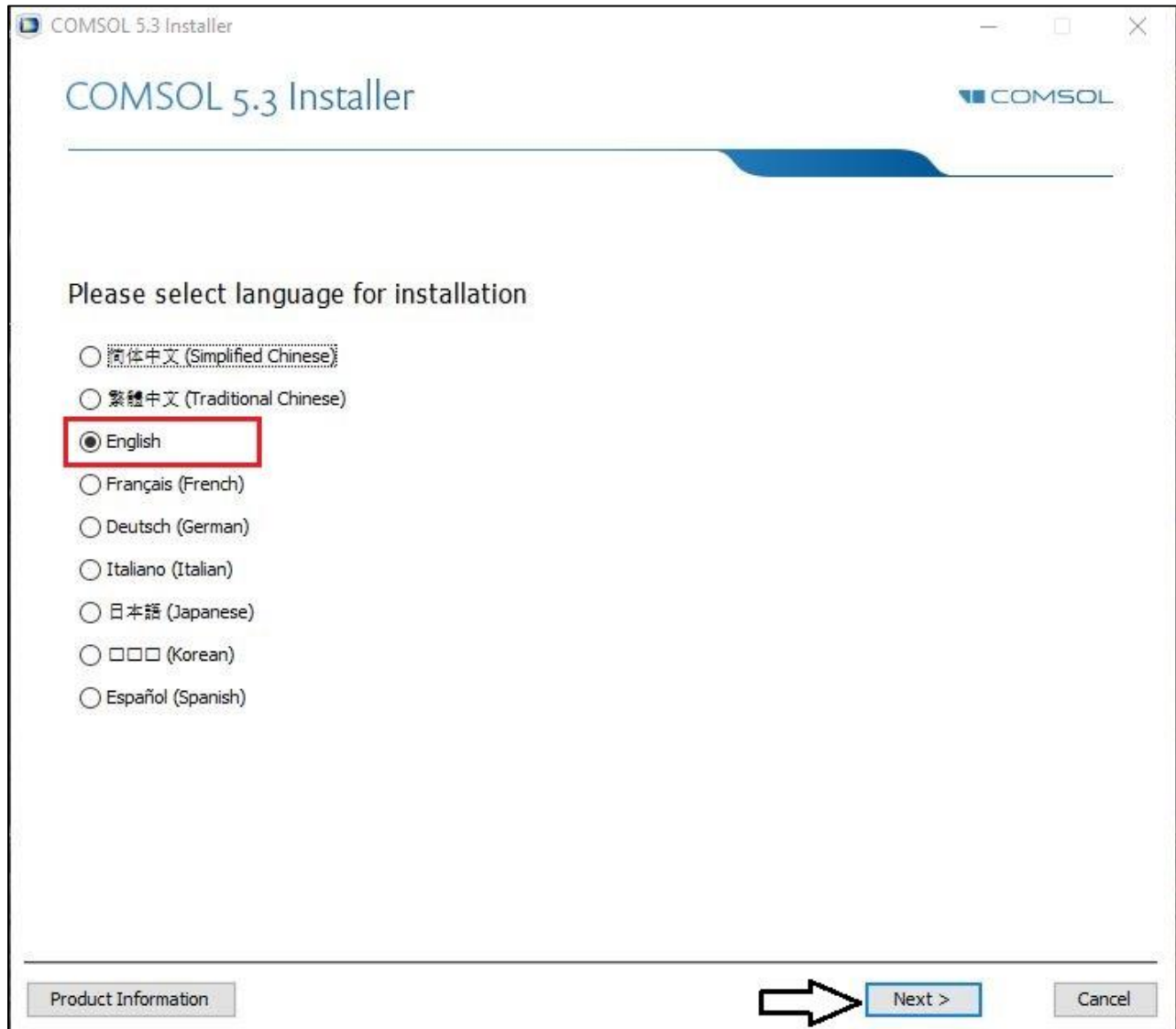
Navigate to the location where iso has been extracted.

C:\Users\SP\Desktop\COMSOL53_dvd.iso

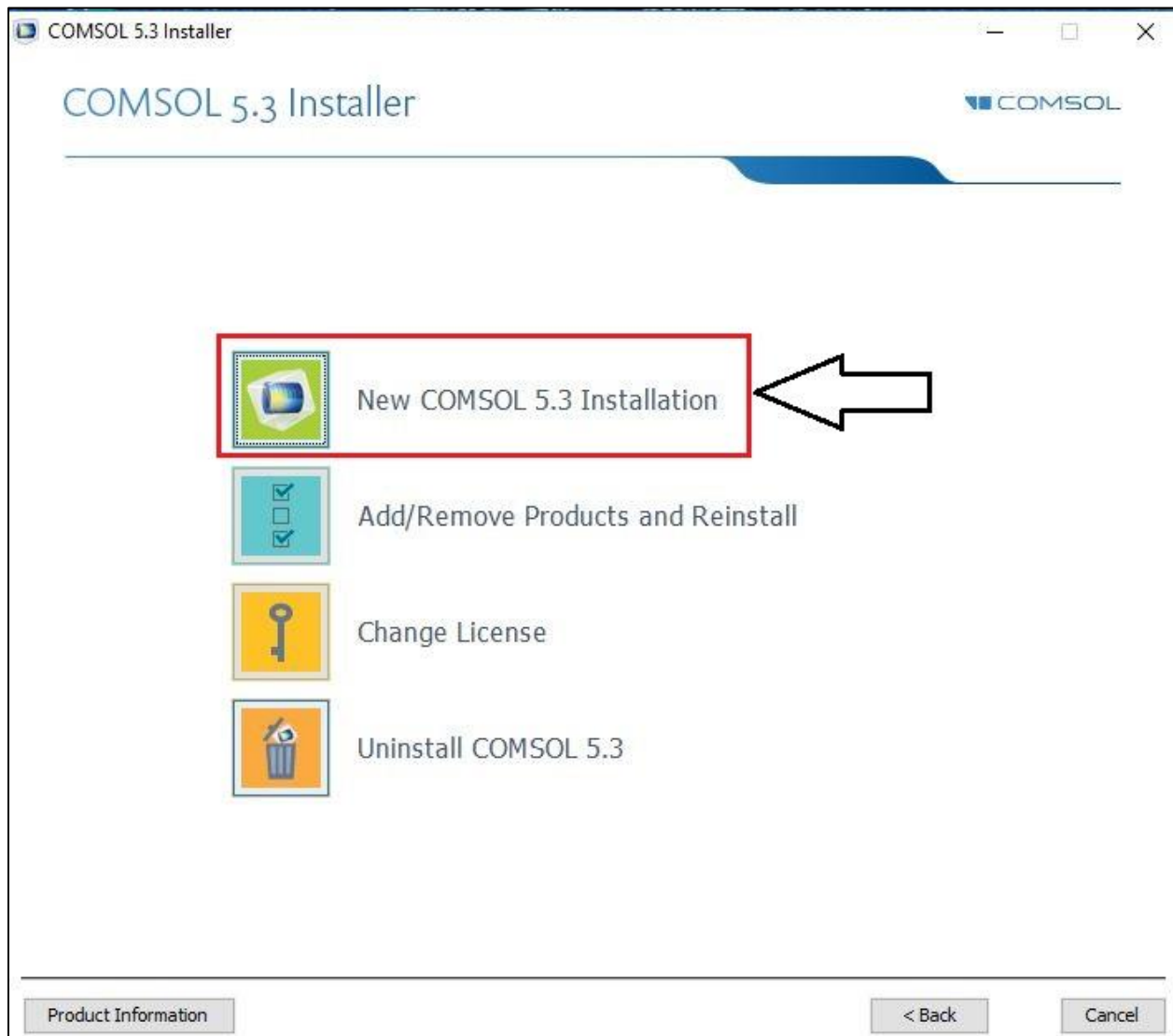
Right click on setup.exe and click run as administrator.



Select Language (English) and click next.



Click on New COMSOL 5.3 Installation.



Enter port number (1718) & Host name (10.0.137.114).

Click on Next.

COMSOL 5.3 Installer

COMSOL 5.3 Installer

License License Number Products Options LiveLink Install Finish

COMSOL Software License Agreement Version 5.3

CAREFULLY READ THE TERMS AND CONDITIONS BELOW AND IN ANY APPLICABLE ADDENDUM (HEREINAFTER, "TERMS AND CONDITIONS") BEFORE INSTALLING OR USING THE PROGRAMS OR DOCUMENTATION. YOUR RIGHT TO USE ANY PROGRAMS AND DOCUMENTATION IS CONDITIONED ON ACCEPTANCE OF, AND COMPLIANCE WITH, THESE TERMS AND CONDITIONS. INSTALLING OR USING THE PROGRAMS MEANS YOU HAVE ACCEPTED THE TERMS AND CONDITIONS. IF YOU DO NOT ACCEPT THE TERMS AND CONDITIONS, RETURN THE PROGRAMS AND RELATED MATERIAL UNUSED TO YOUR VENDOR FOR A REFUND OR CEASE ANY AND ALL ATTEMPTS TO DOWNLOAD AND INSTALL THE PROGRAMS AND DELETE ANY MATERIAL DOWNLOADED. ANY THIRD PARTY HIRED TO INSTALL THE PROGRAMS ON BEHALF OF THE PURCHASER OF A LICENSE THERETO WHO CLICKS HIS/HER ACCEPTANCE OF THESE TERMS AND CONDITIONS UPON INSTALLATION HEREBY REPRESENTS AND WARRANTS THAT HE/SHE IS

I accept the terms of the license agreement and understand and acknowledge that with this acceptance all other terms are rejected

I do not accept the terms of the license agreement

License information

License format: <port number>@<host name>

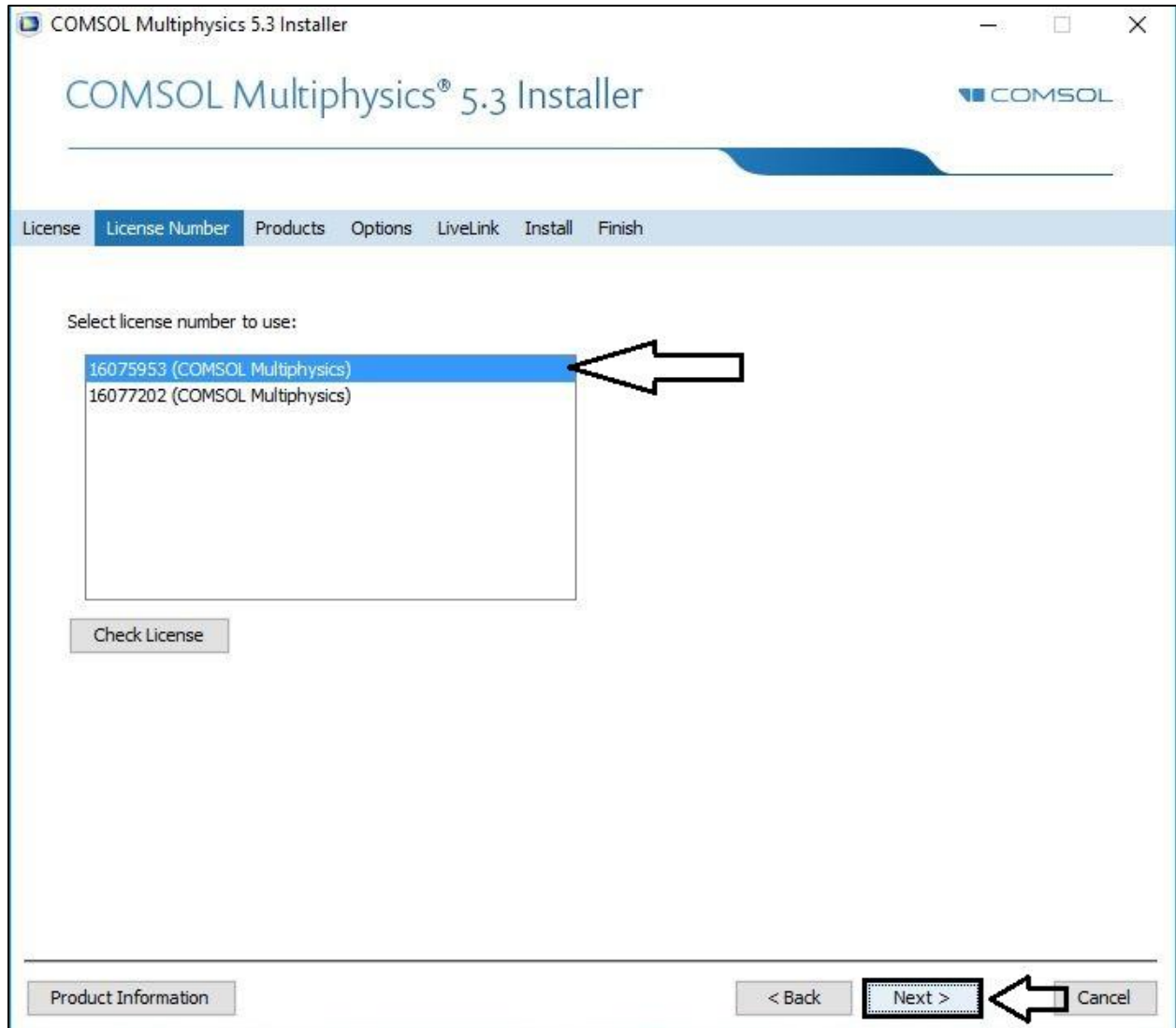
Port number: 1718 Host name: 10.0.137.114 Check

Name: Company:

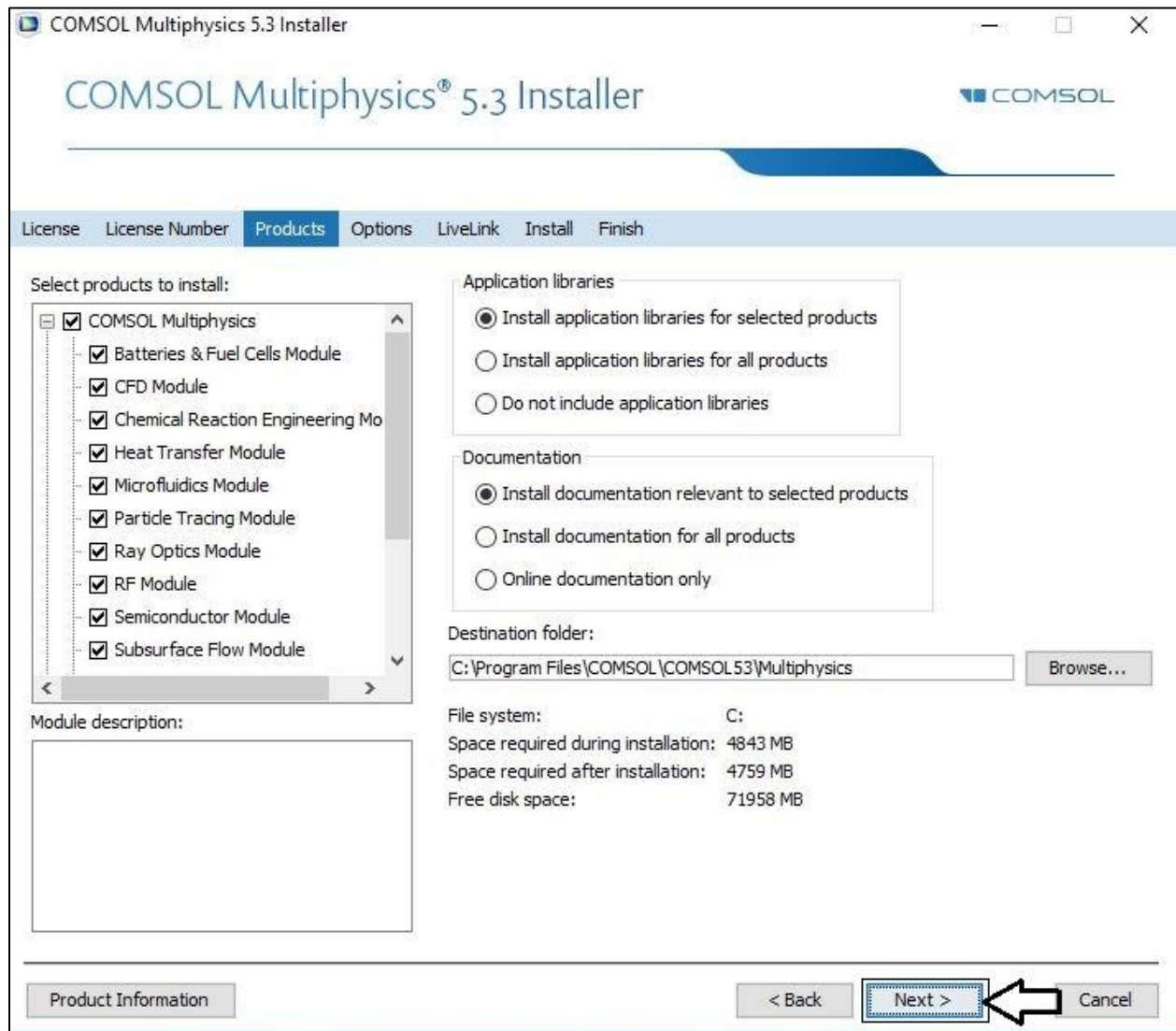
Product Information < Back Next > Cancel

Select License Number.

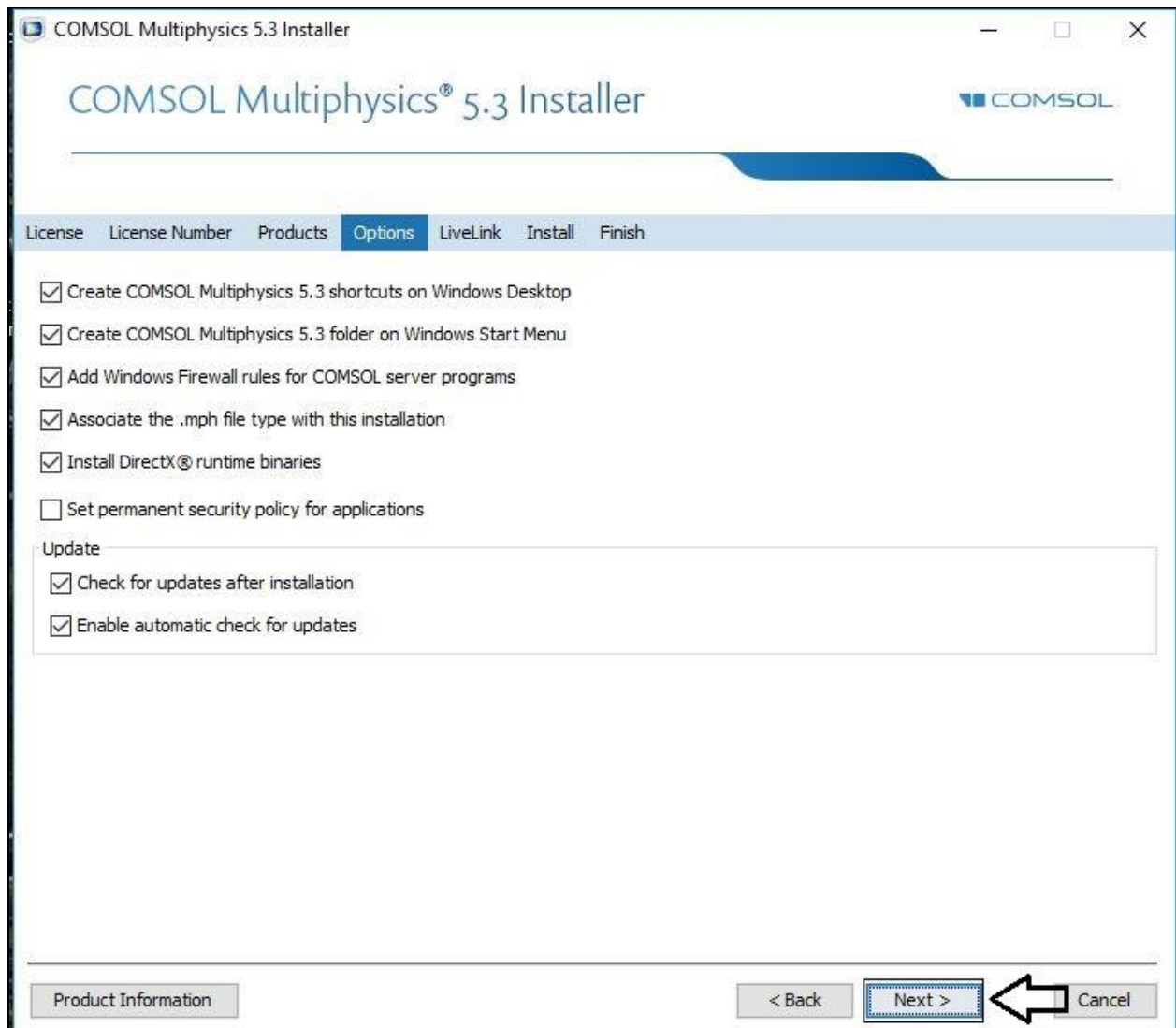
Click on Next.



Click on Next.

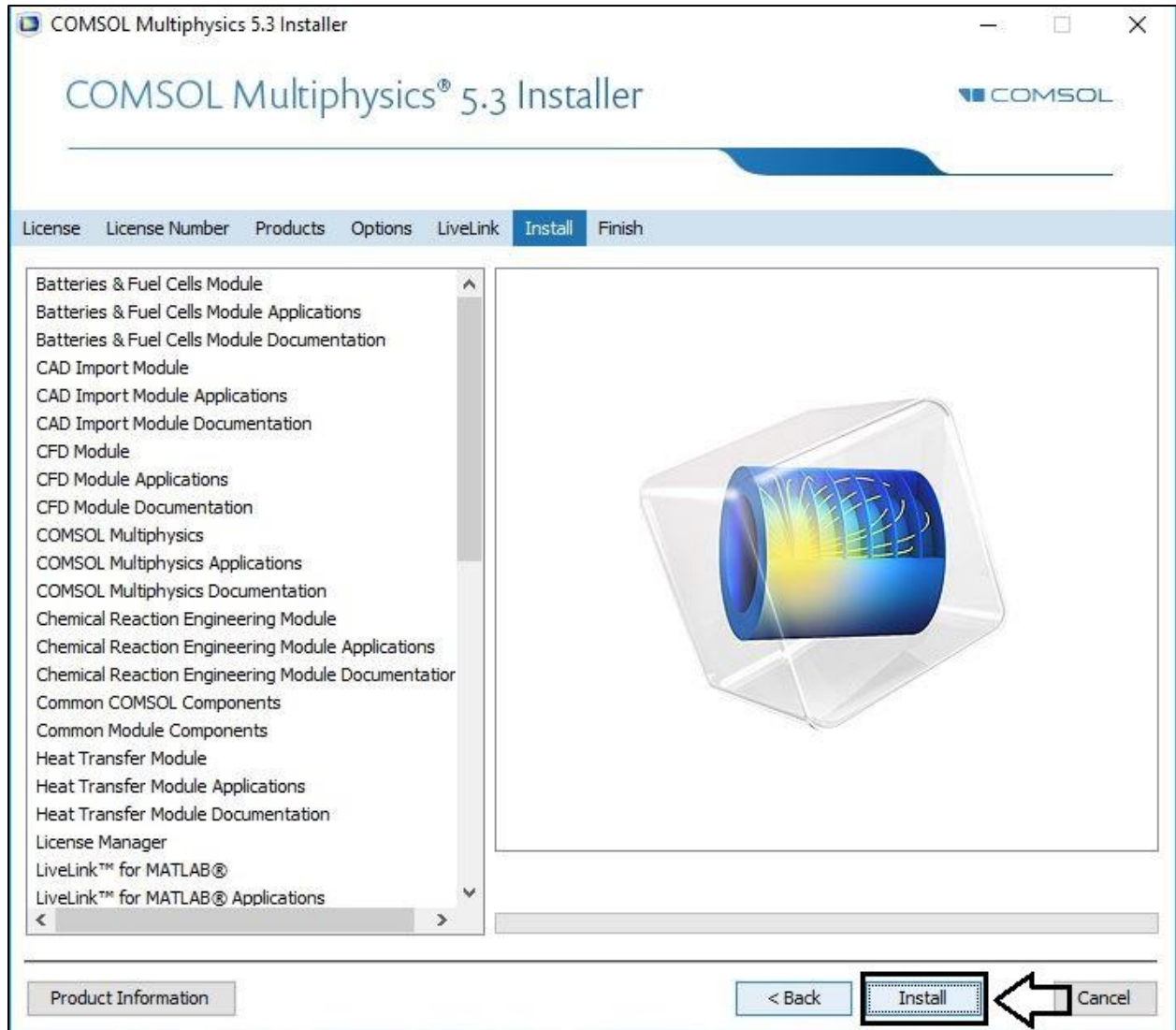


Click on Next.



Click on Install & it will take some time.

Click on Next.



Click on Finish & Close.

