


Install and click next (if prompted)

CSiBridge 21 - InstallShield Wizard

 CSiBridge 21 requires the following items to be installed on your computer. Click Install to begin installing these requirements.

Status	Requirement
Pending	Microsoft Visual C++ 2017 Redistributable Package (x86) 14.16.27033.0
Pending	Microsoft Visual C++ 2017 Redistributable Package (x64) 14.16.27033.0

 Microsoft Visual C++ 2017 Redistributable (x64) - 14.16.27... — □ ×



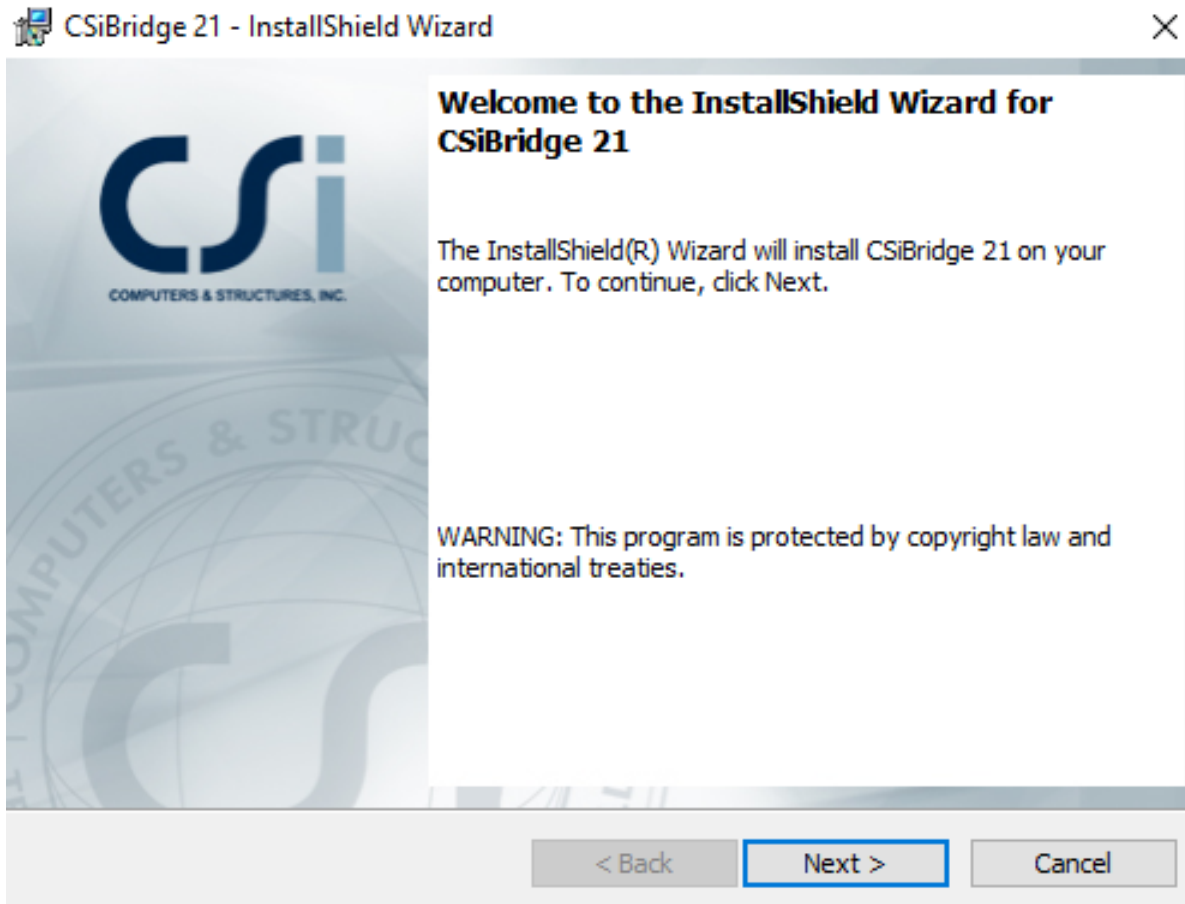
Microsoft Visual C++ 2017 Redistributable (x64) - 14.16.27033

Setup Progress

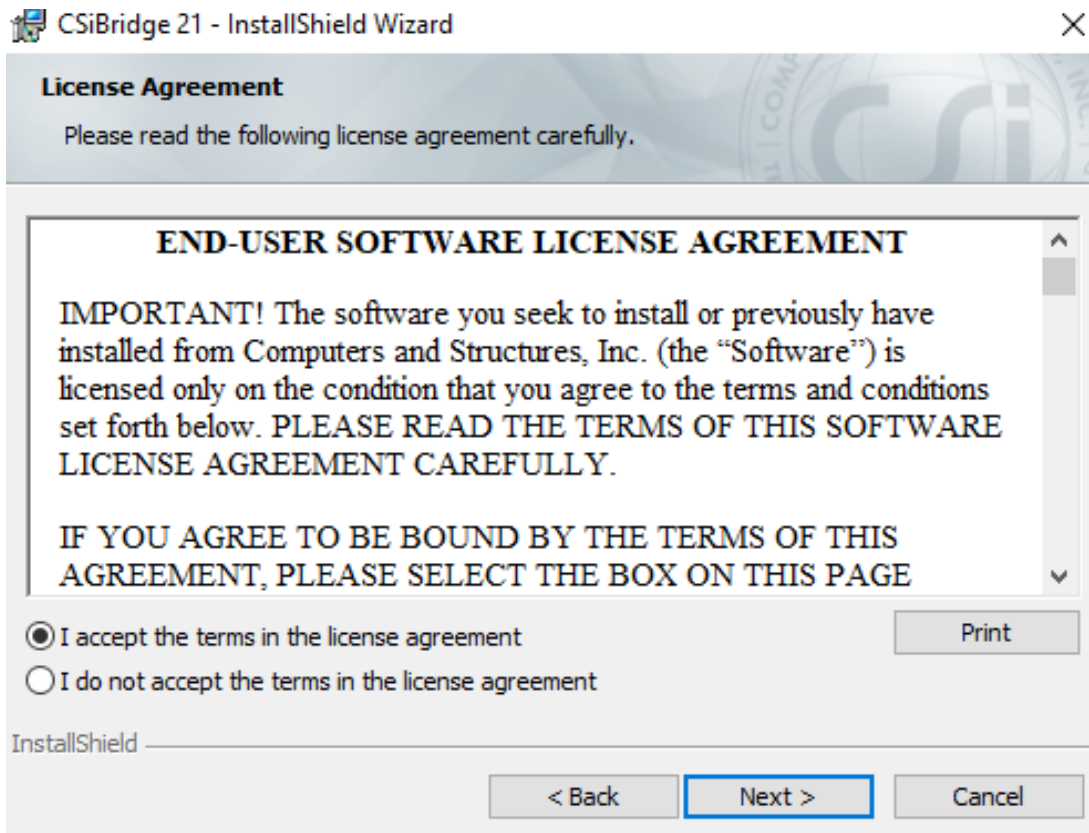
Processing: Microsoft Visual C++ 2017 X64 Minimum Runtime - 14.16.27033



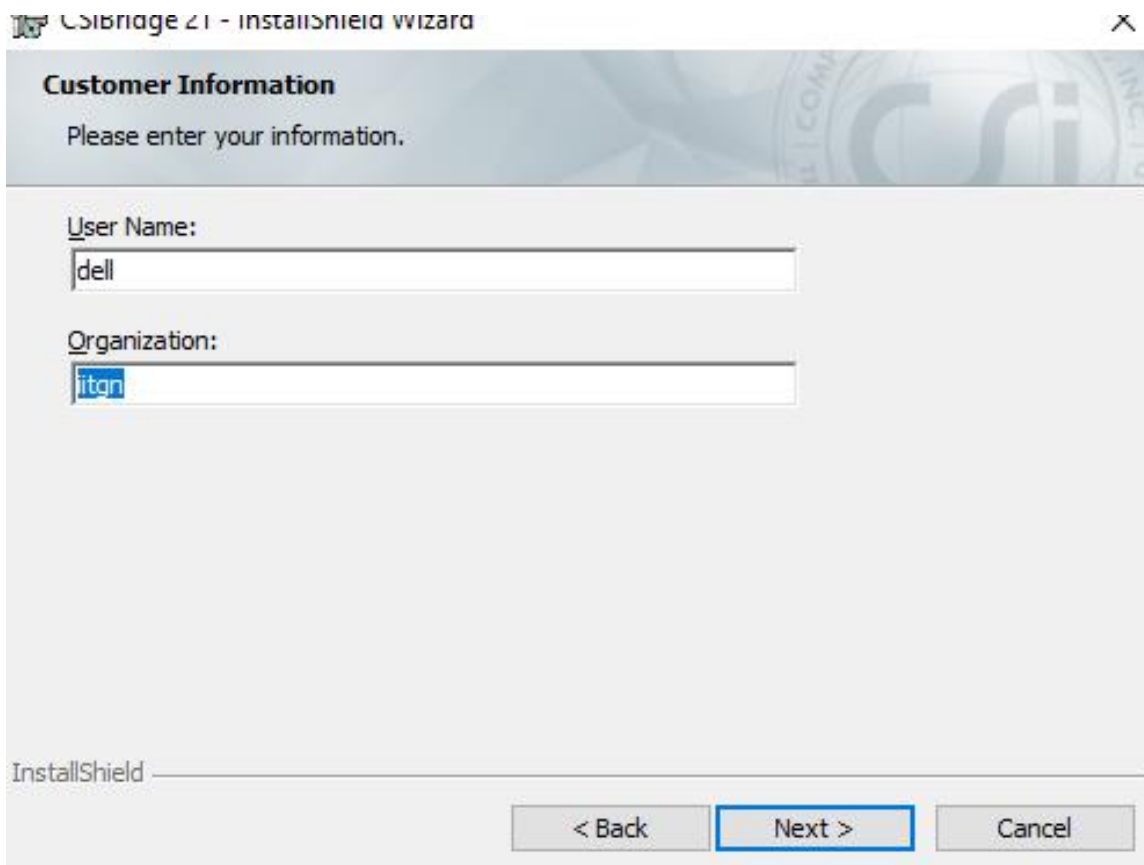
Click Next



Accept the terms in the license agreement and click next



Provide your name and organization name as given below and click next



CSiBridge 21 - InstallShield Wizard

Customer Information

Please enter your information.

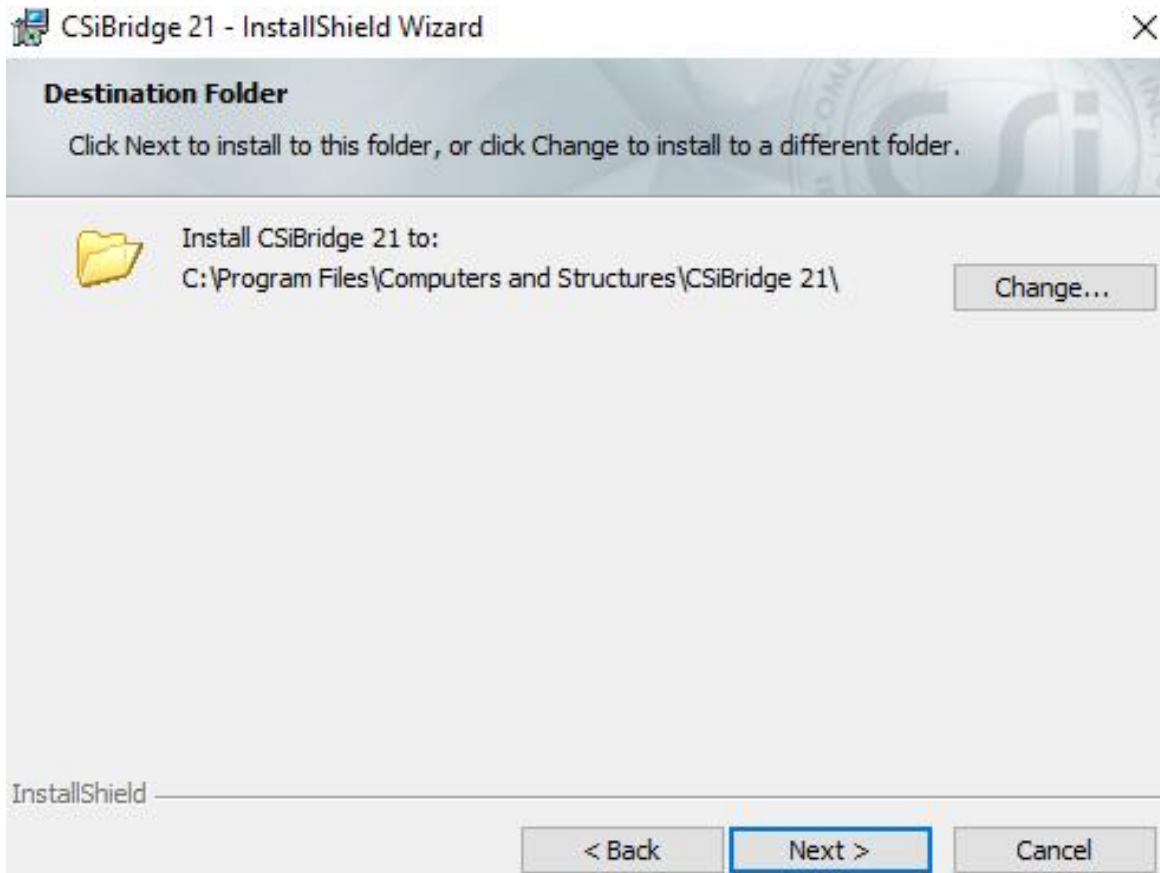
User Name:
dell

Organization:
iten

InstallShield

< Back Next > Cancel


By default the installation directory is C: drive. In case you wish to install in any other drive please browse; else click next



CSiBridge 21 - InstallShield Wizard

Destination Folder

Click Next to install to this folder, or click Change to install to a different folder.

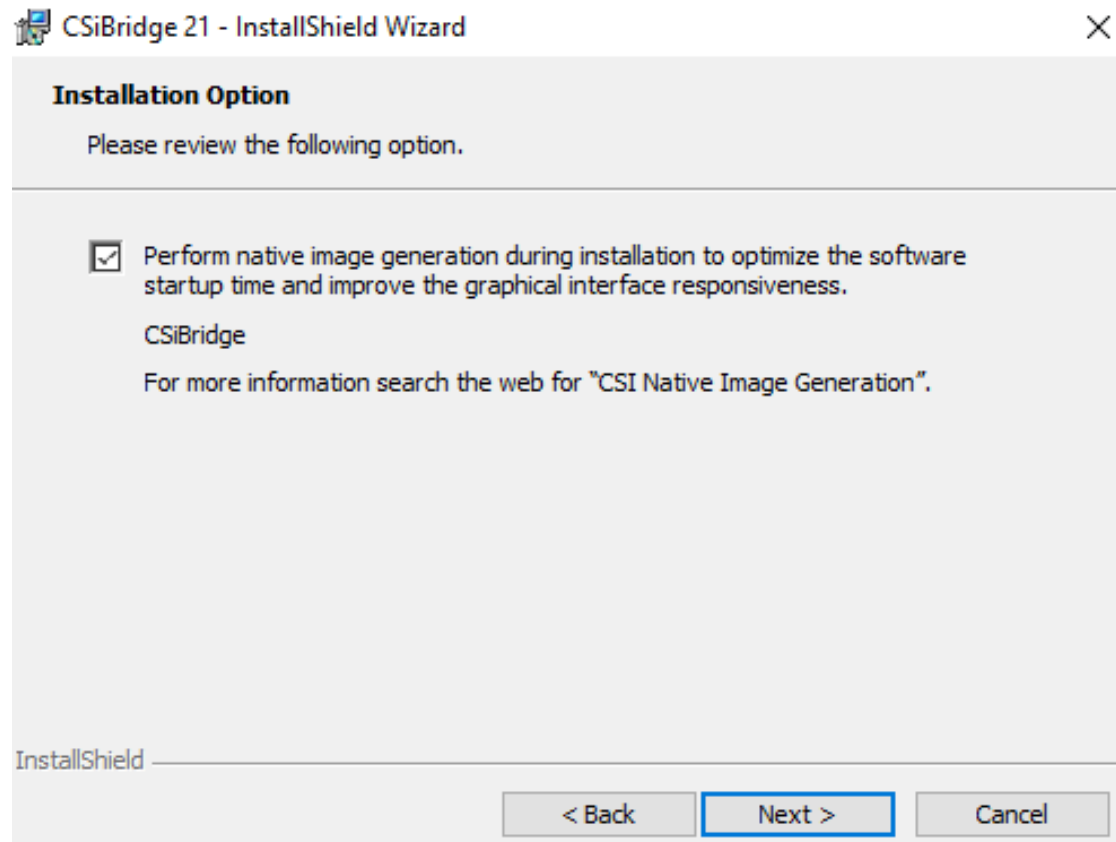
 Install CSiBridge 21 to:
C:\Program Files\Computers and Structures\CSiBridge 21\

Change...

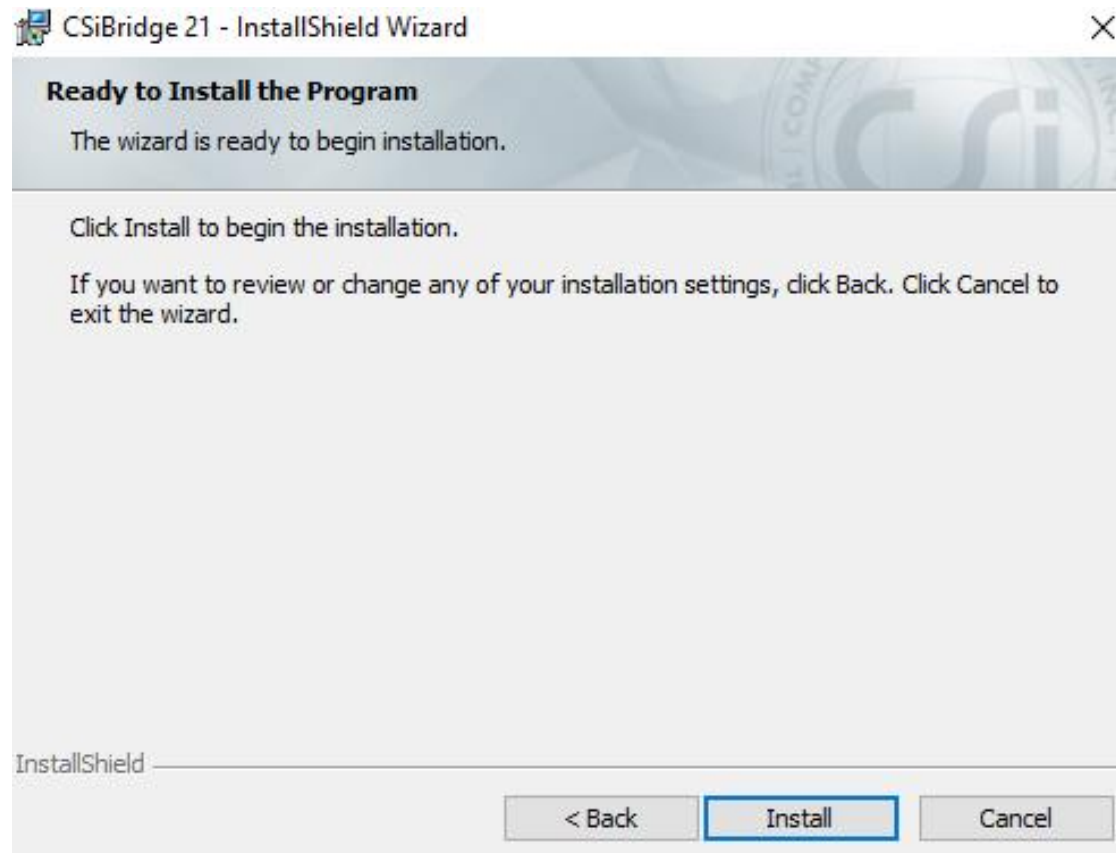
InstallShield

< Back Next > Cancel

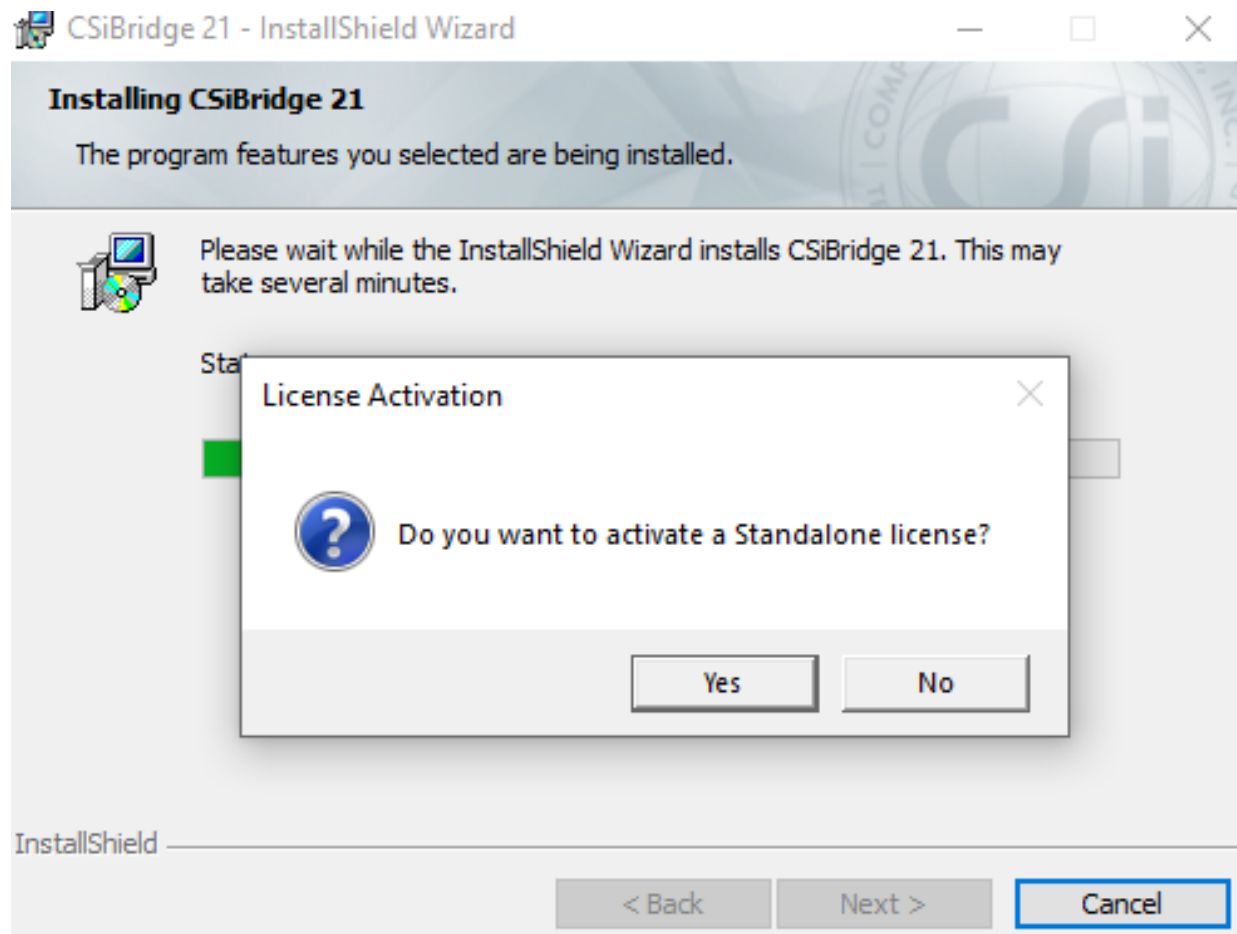
Click next



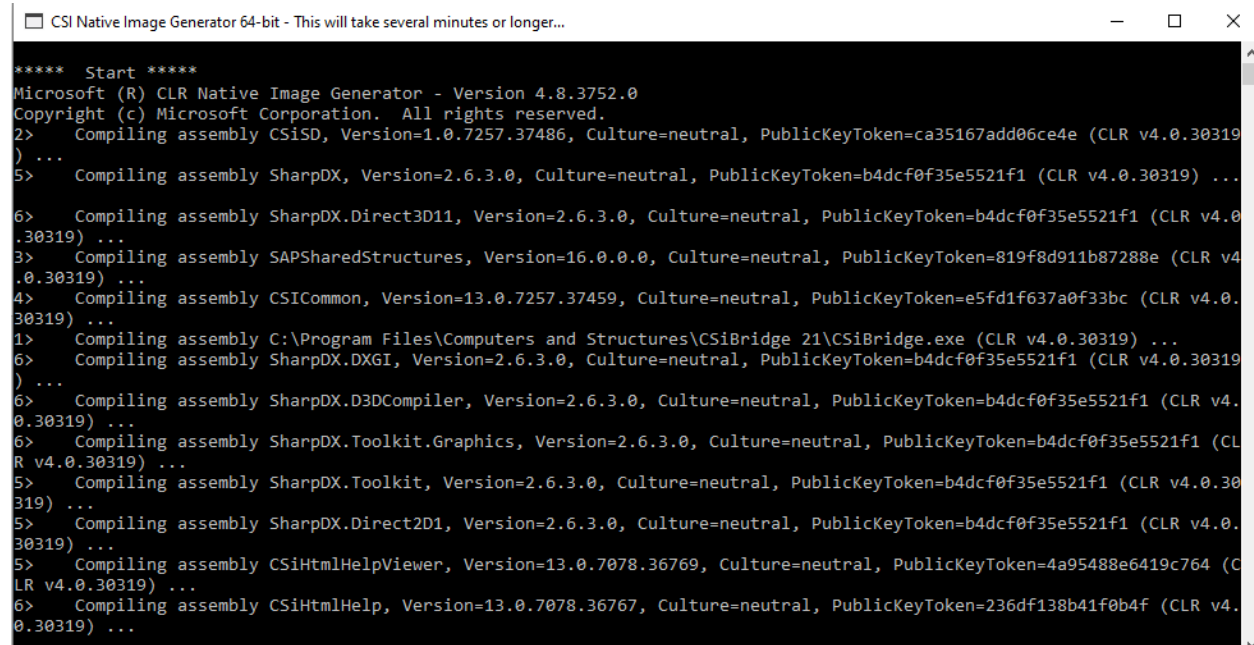
Click install



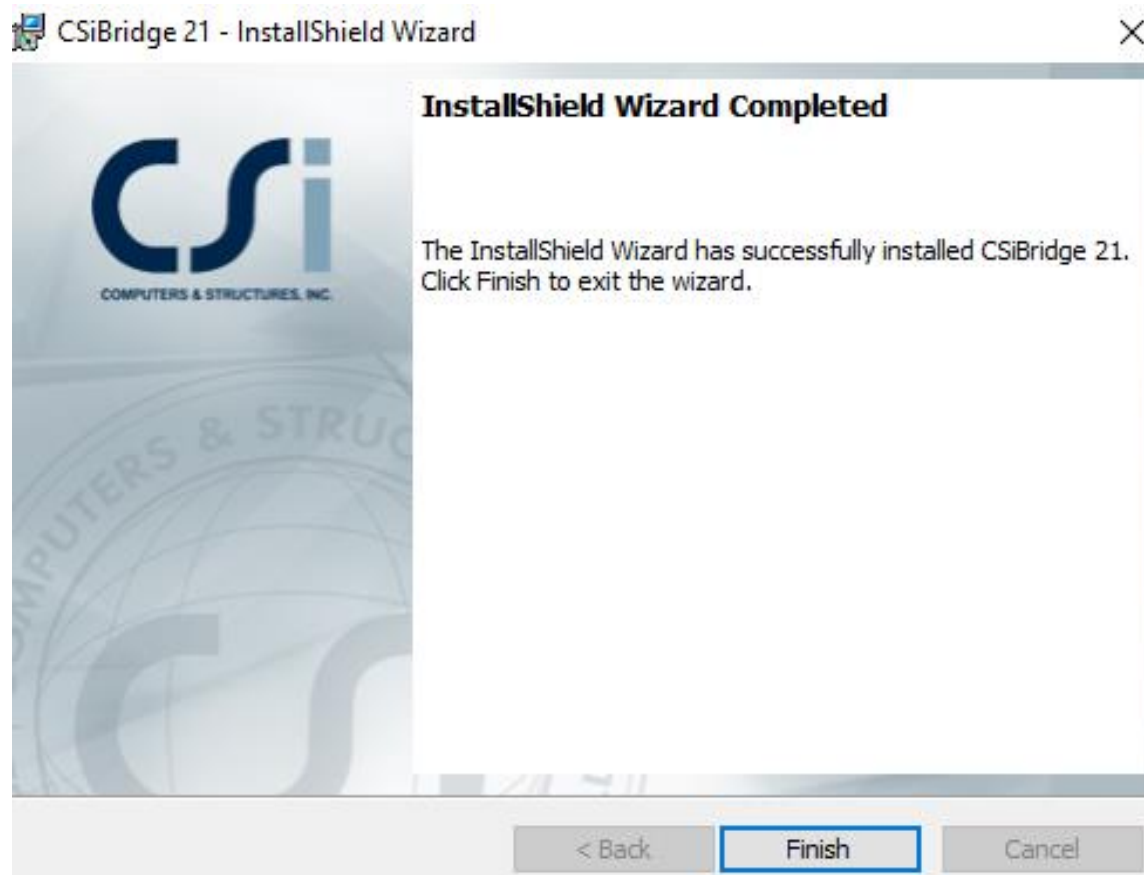
Click No



Lot of output will be seen in a separate window as show below



Click Finish



Copy the lmhosts.ini file (do not change its content) under the installed directory [C:\Program Files\Computers and Structures\CSiBridge 21] with Administrative rights

Open CSI from the Start Menu

