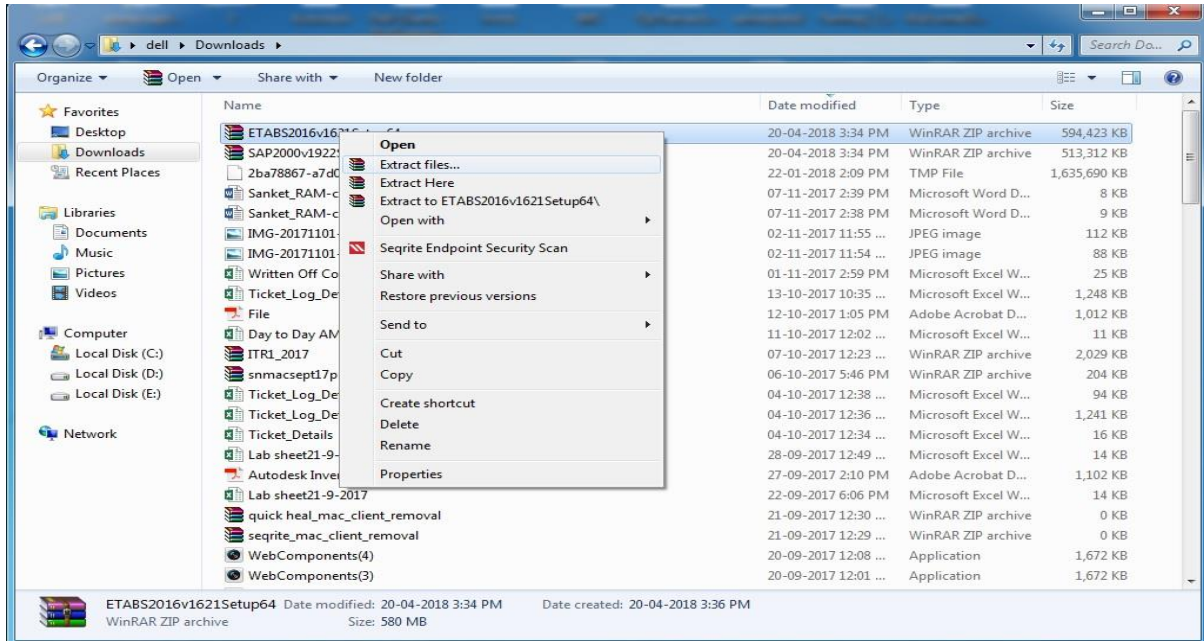
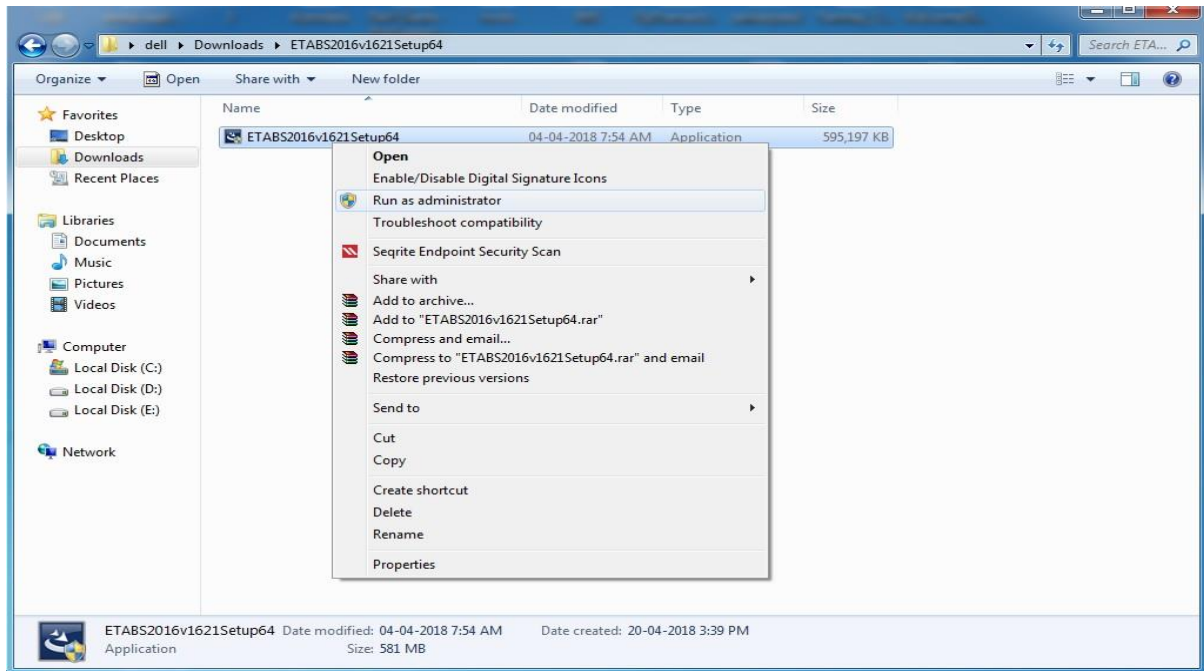


# How to Install ETABS2016 on Windows

Download ETABS2016v1621Setup64.zip, Imhost.ini from ISTF website under Software category. Extract the downloaded ETABS2016v1621Setup64.zip file as shown below.



Click on ETABS Setup File



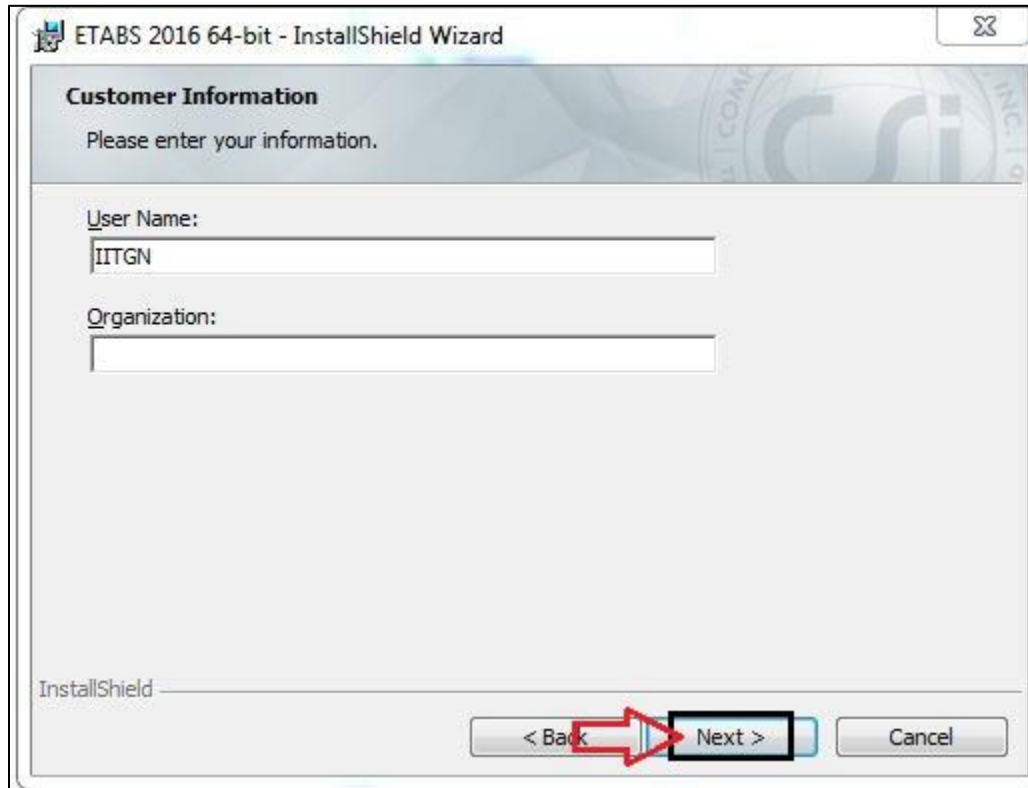
Click on Next.



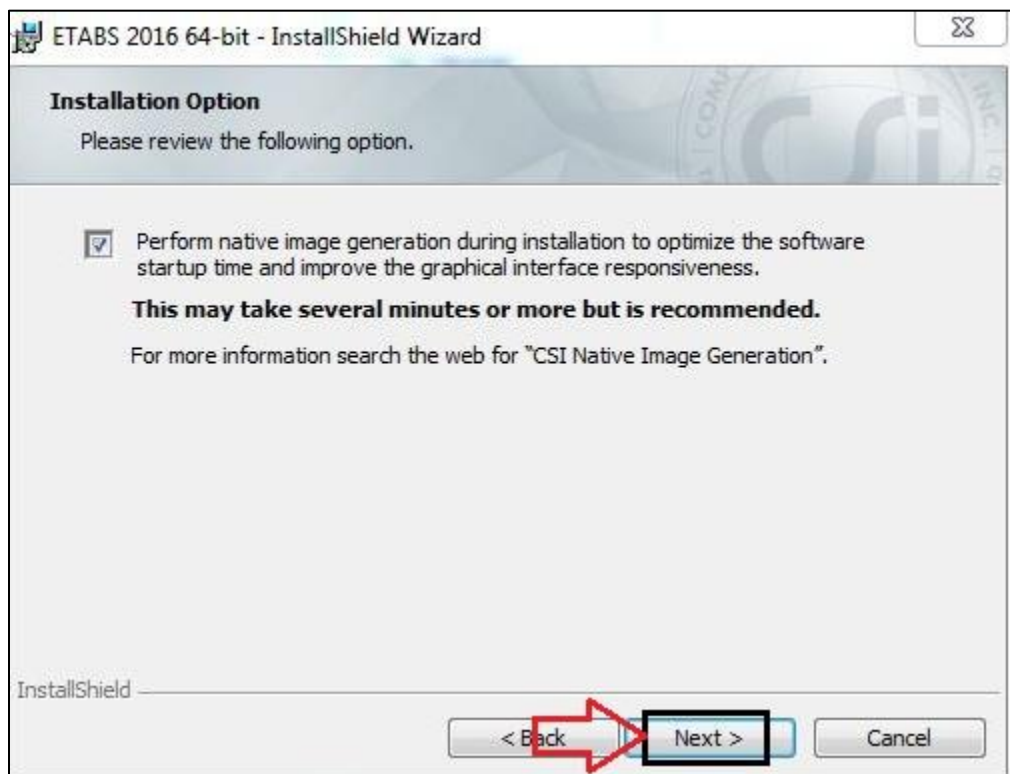
Select License Agreement and Click on Next.



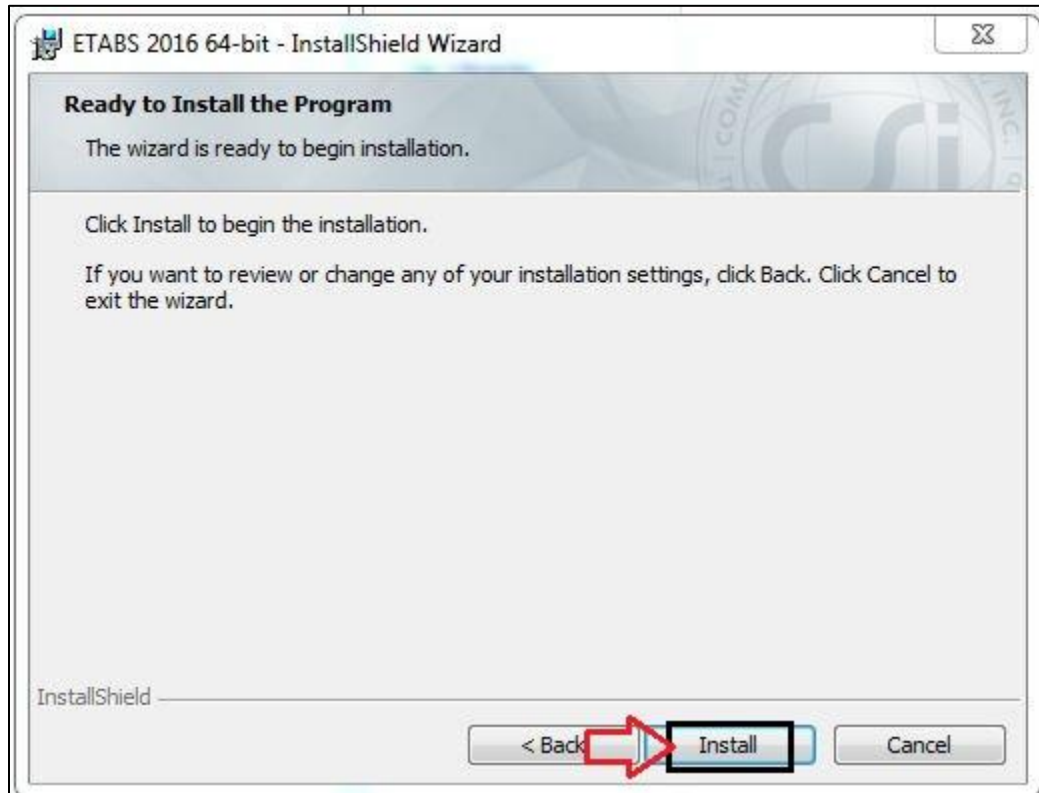
Click on Next.



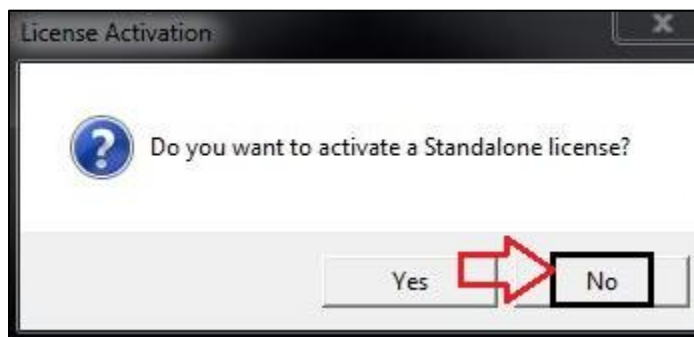
Click on Next.



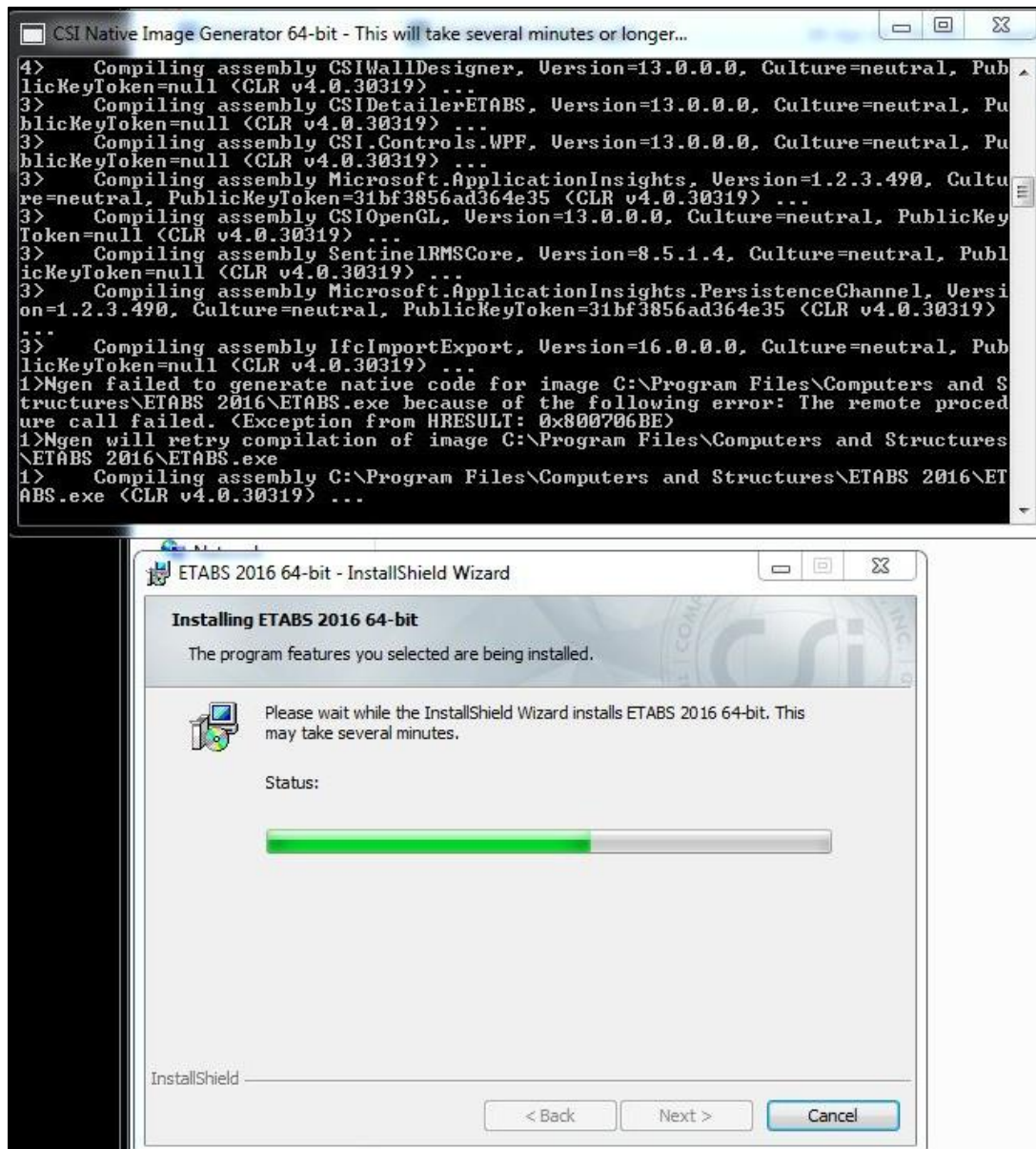
Click on Install.



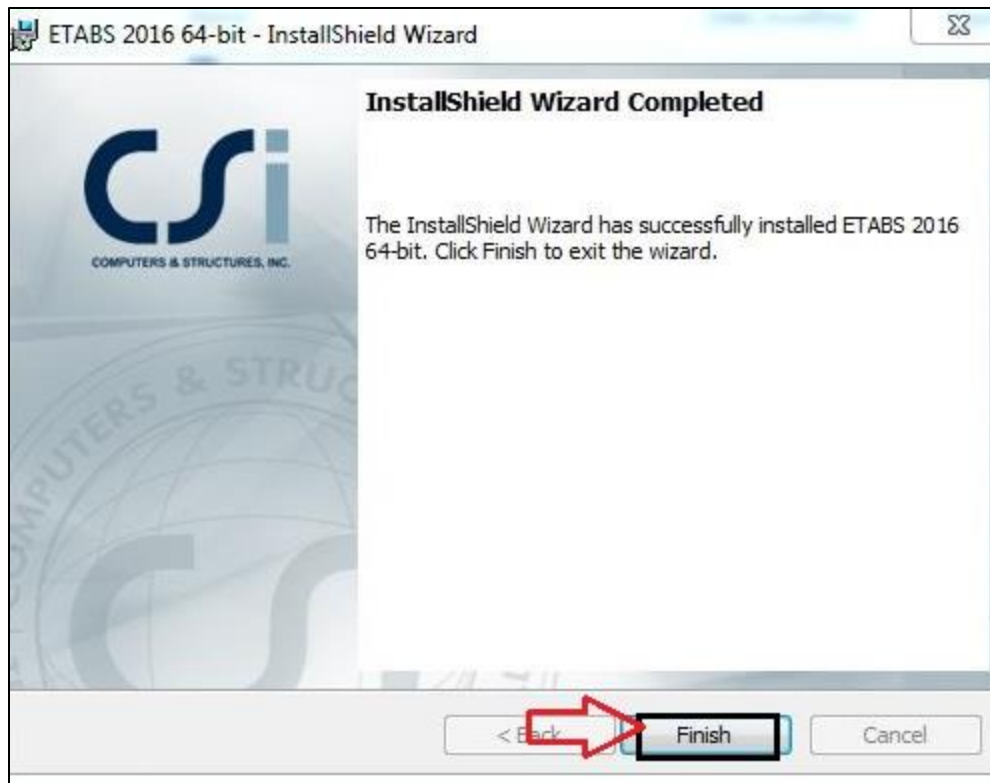
Click on No.



Installation is started and it will take some time.



Click on Finish.



### **Important Note:**

Once the installation has been finished, go the location "[C:\Program Files\Computers and Structures\ETABS 2016\ETABS.exe](#)", delete `Imhost.ini` file, and paste the `Imhost.ini` file, which you have downloaded from [ISTF website](#). Now, you can use the application.