

# MATLAB Installation Guide for version 2019b – Linux

Download R2019b\_glnxa64.iso, License file and License key from ISTF website under Software category.

Add below entry in your host

file. # sudo vi /etc/hosts

```
10.0.137.114    WIN-M5CNITGRVDB
```

Save it.

Open the command line terminal.

Navigate to the location where iso files have been downloaded.

```
# cd /home/user/Downloads
```

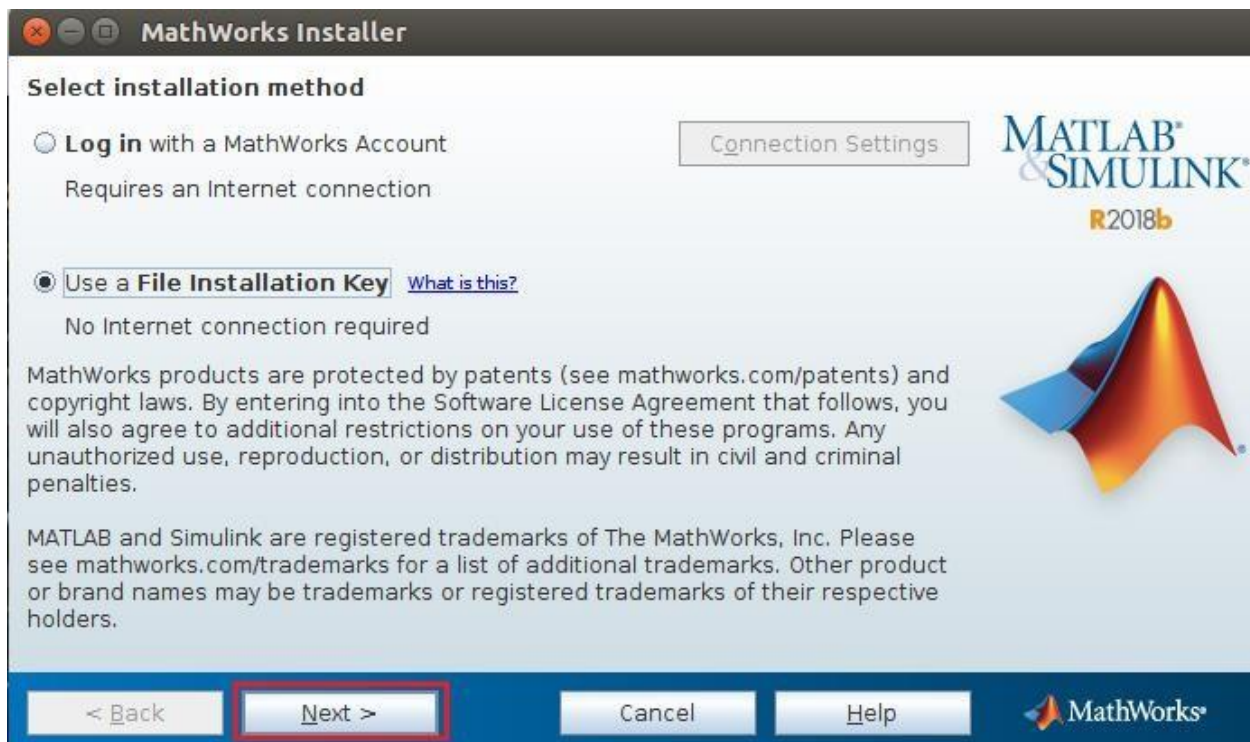
Extract the R2018b\_glnxa64.iso file at same location.

```
# cd /home/user/Downloads/R2018b_glnxa64
```

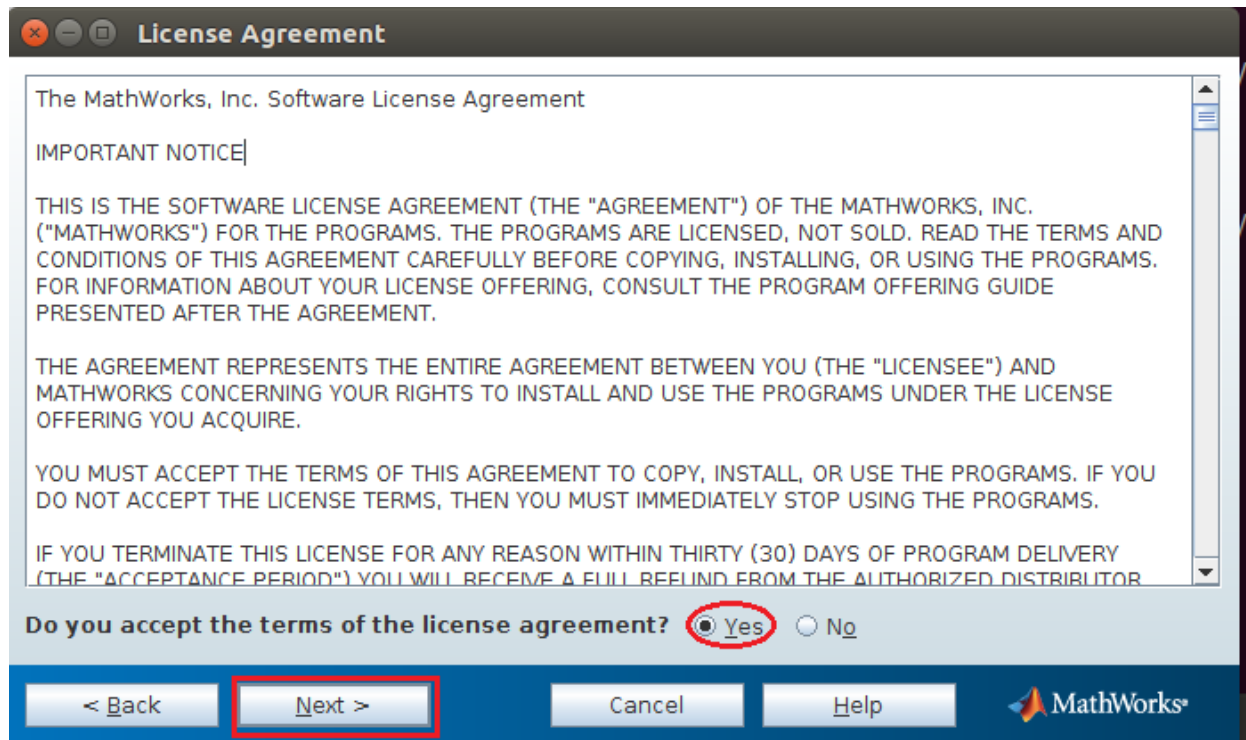
```
# sudo ./install
```

Select Use a File Installation Key.

Click on Next.



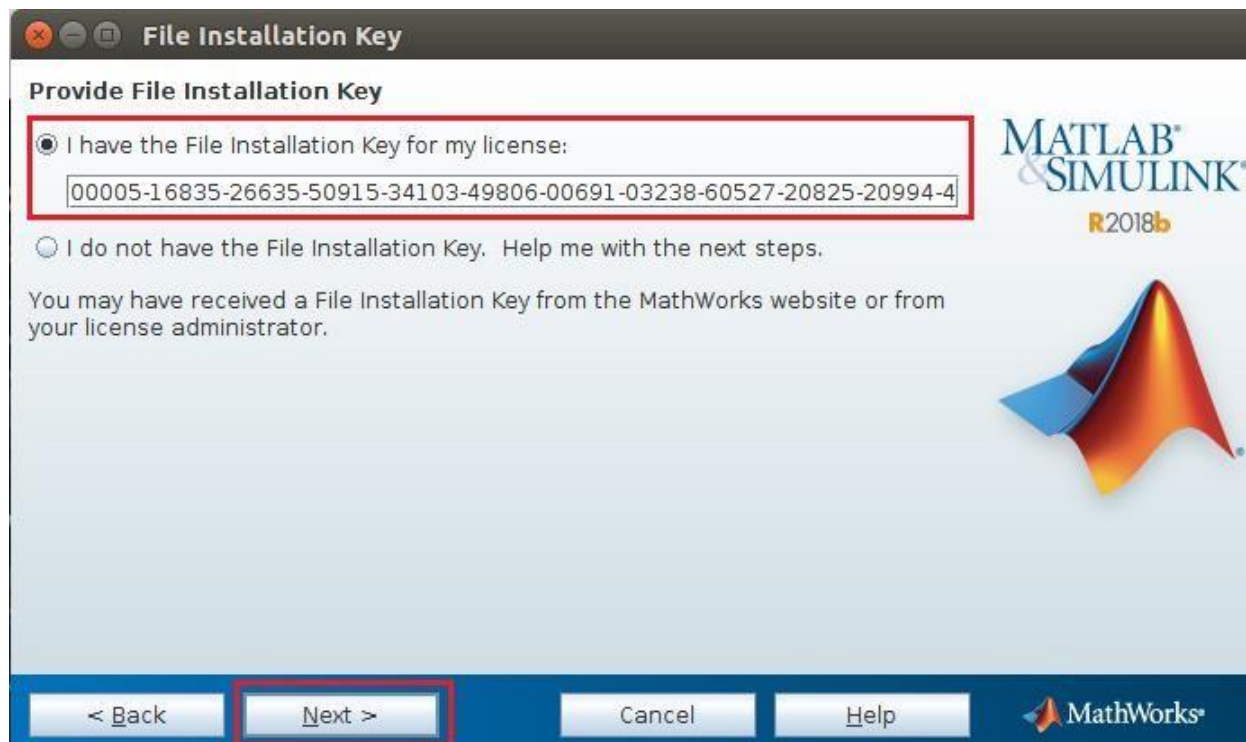
Select Yes and Click on Next.



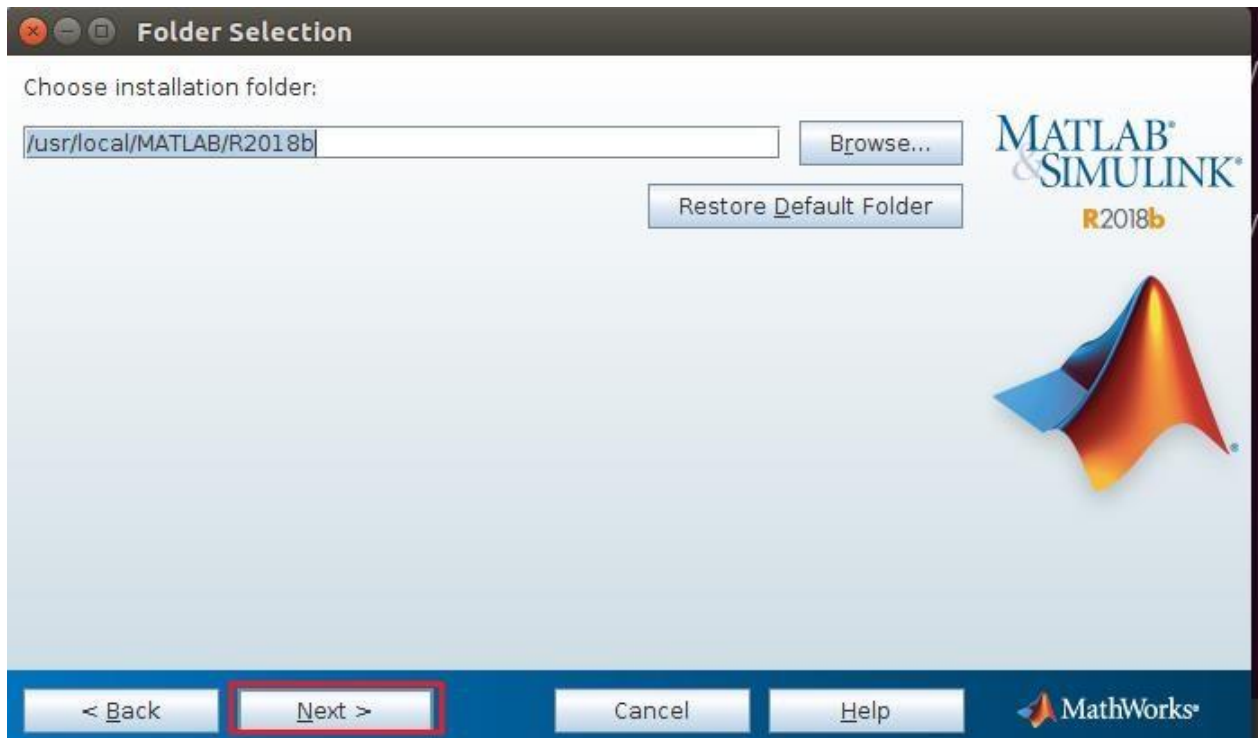
Insert License key given as below:

14633-55698-04000-58825-48705-37053-34967-18821-22795-47673-21703-08488-38879-22408-18378-62049-59204-41882-23670-01378-47268-40513

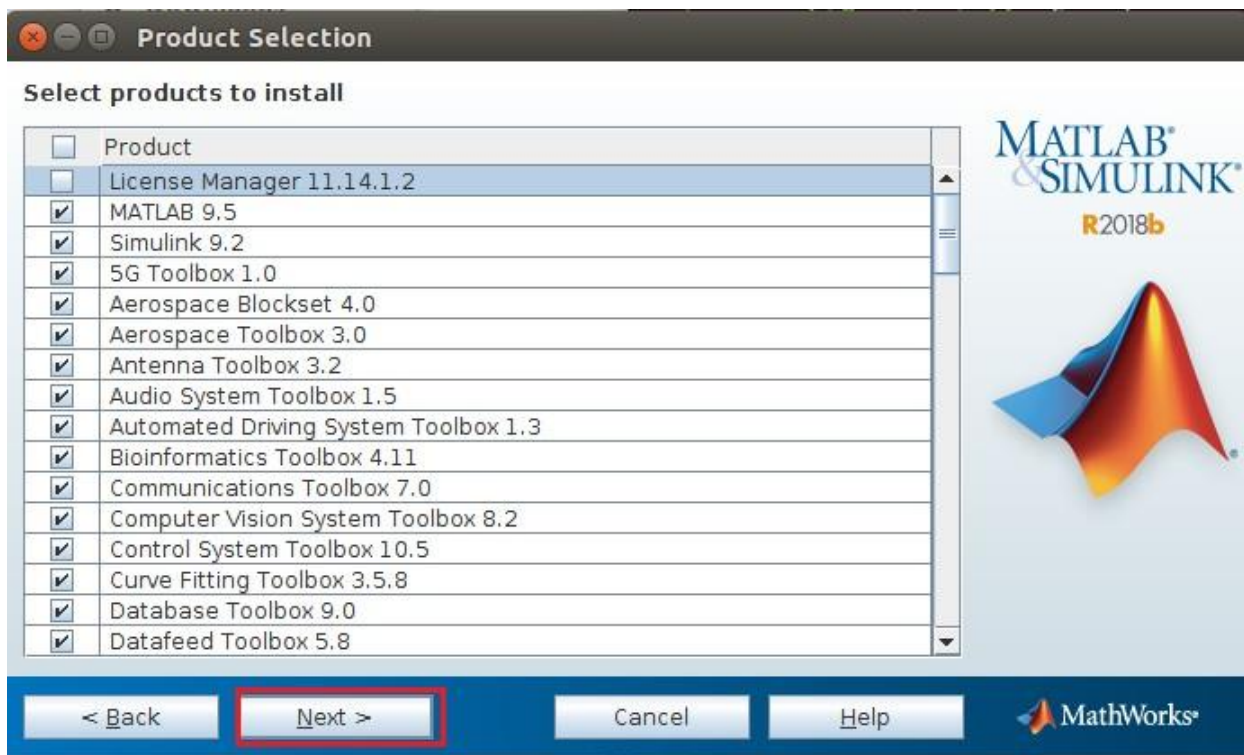
Click on Next.



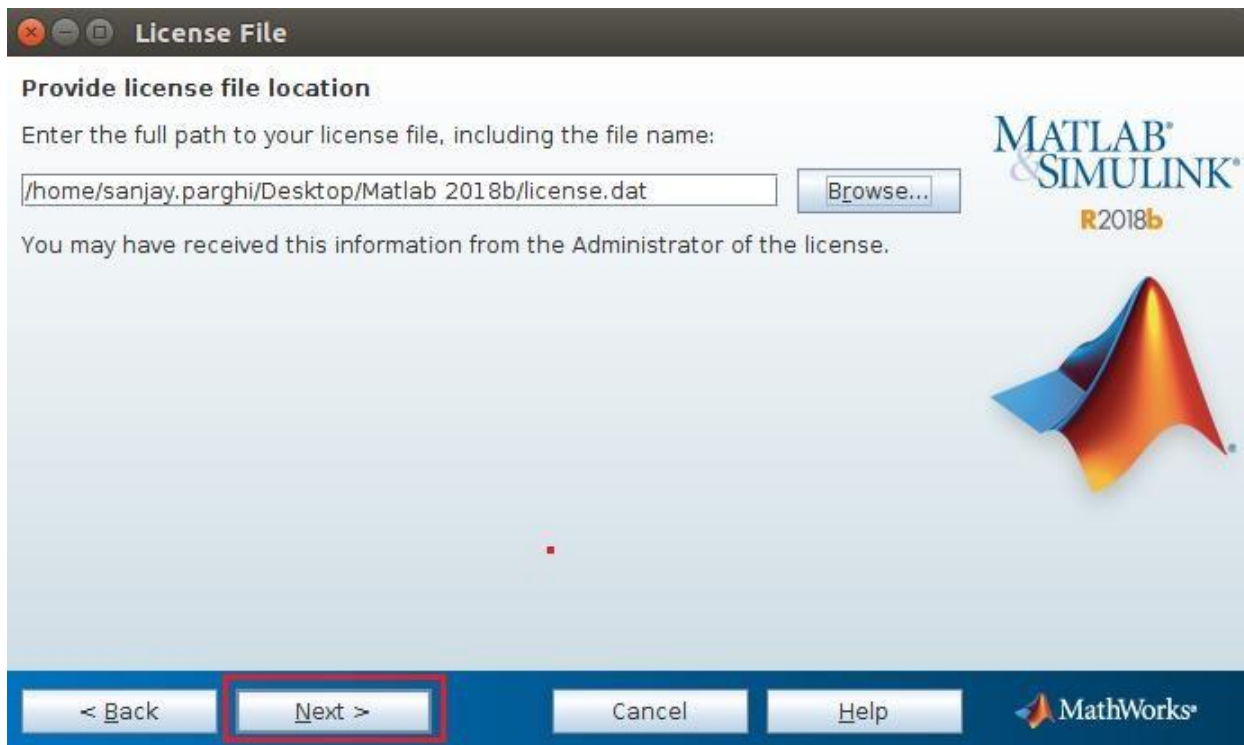
Click on Next.



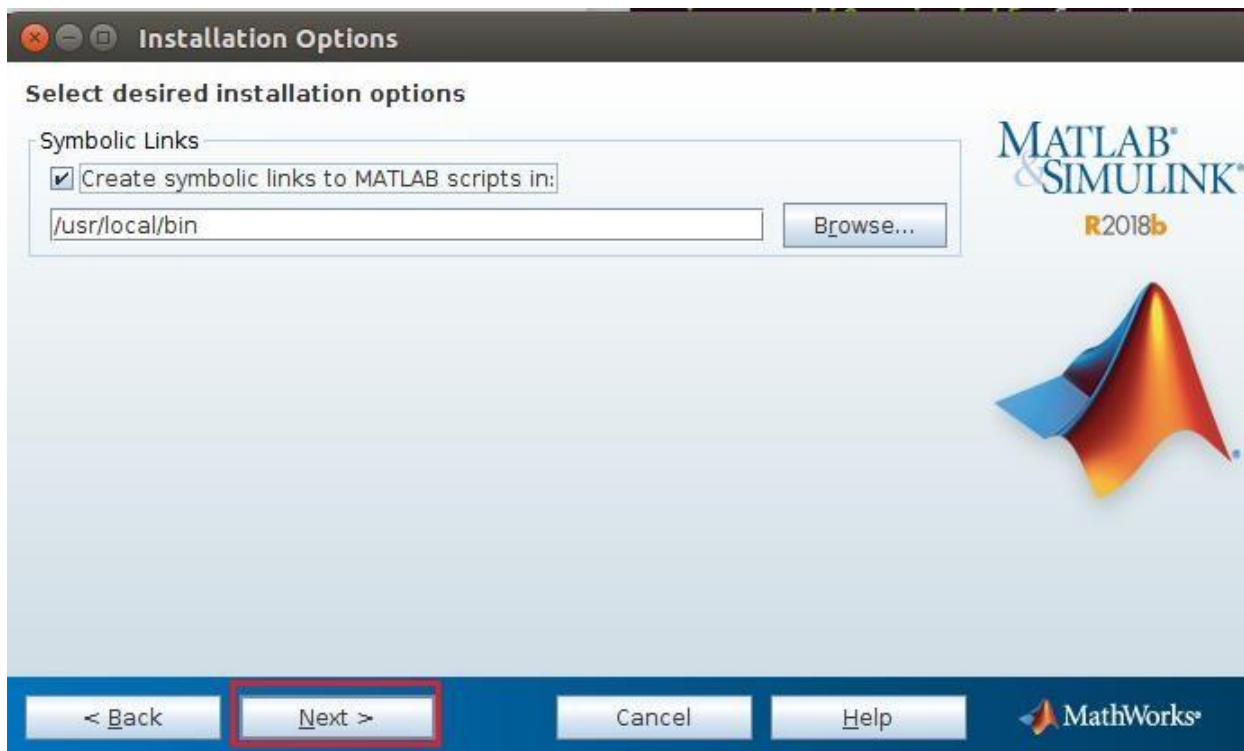
Select all Products except License Manager and click on Next.



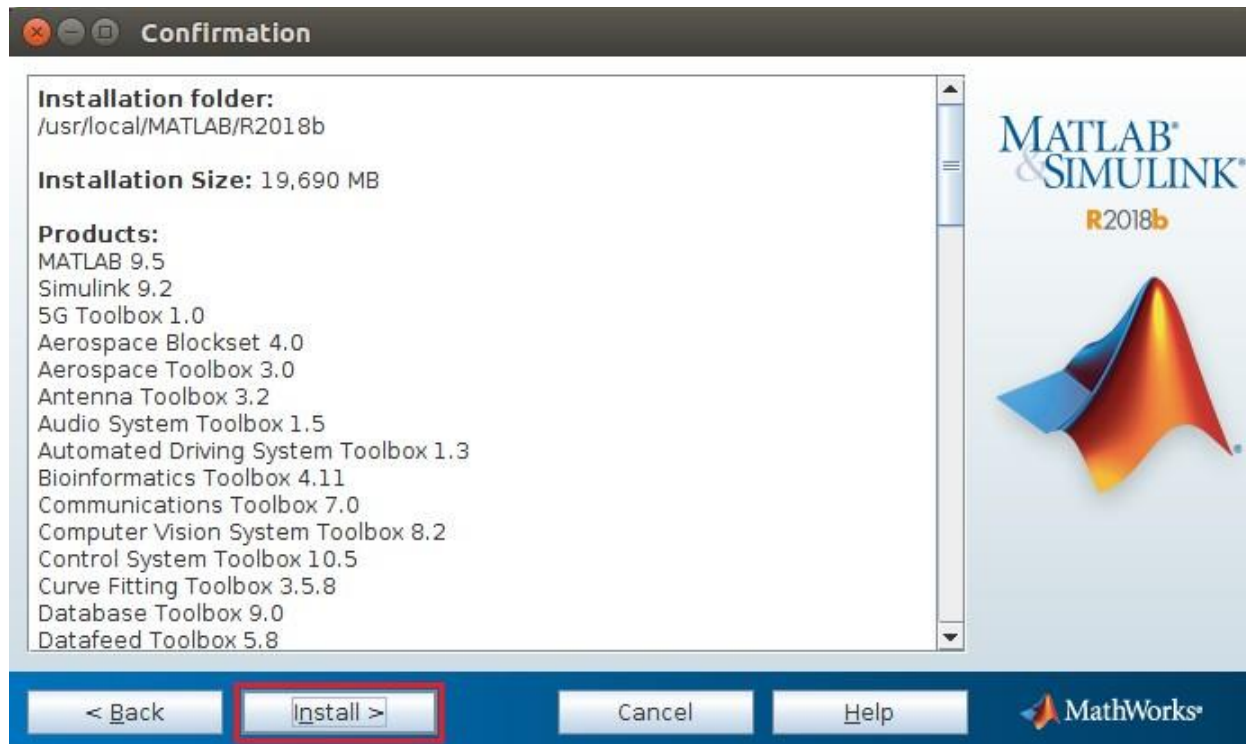
Browse the license.dat file. Which is already Download. And Click on next.



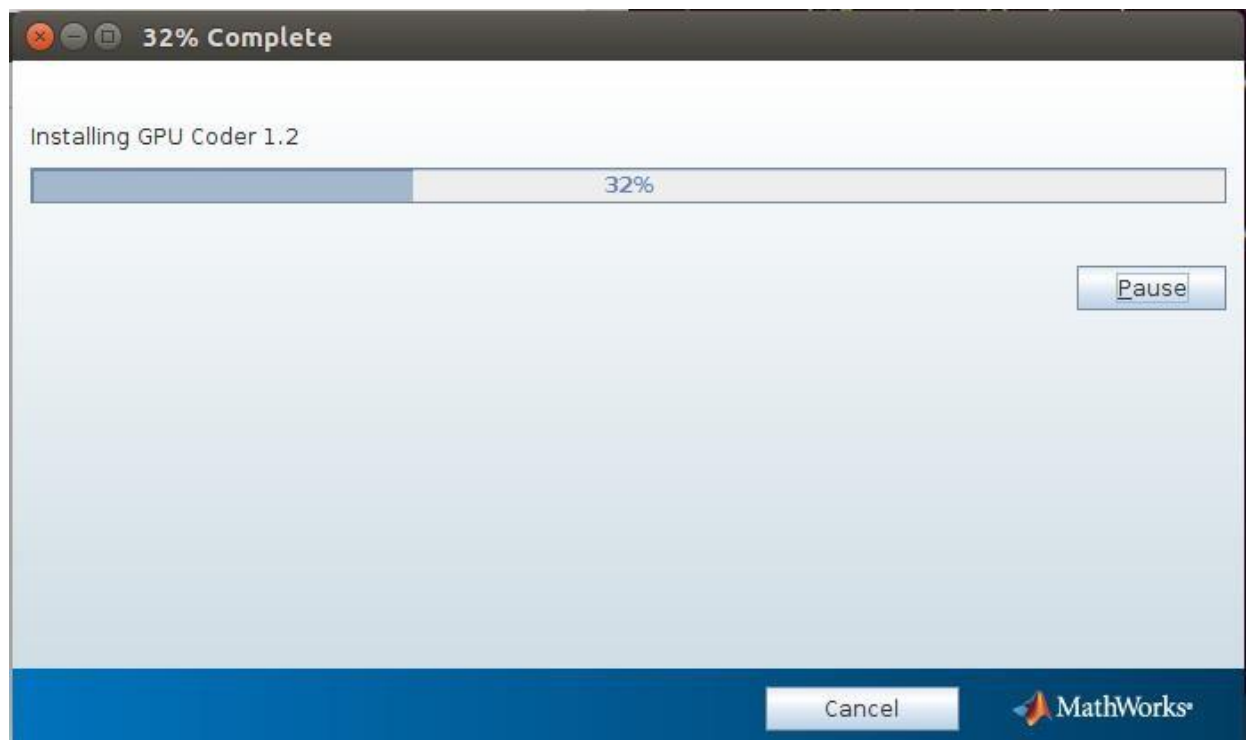
Click on Next.



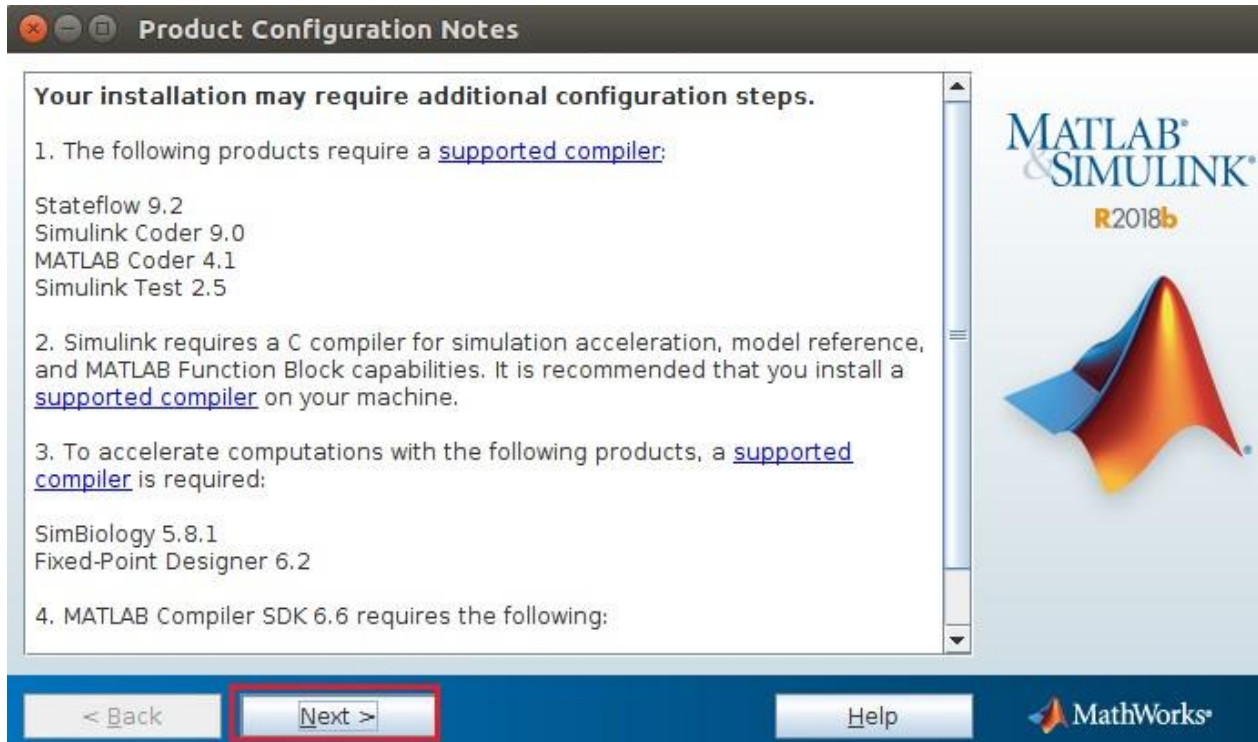
Click on Install



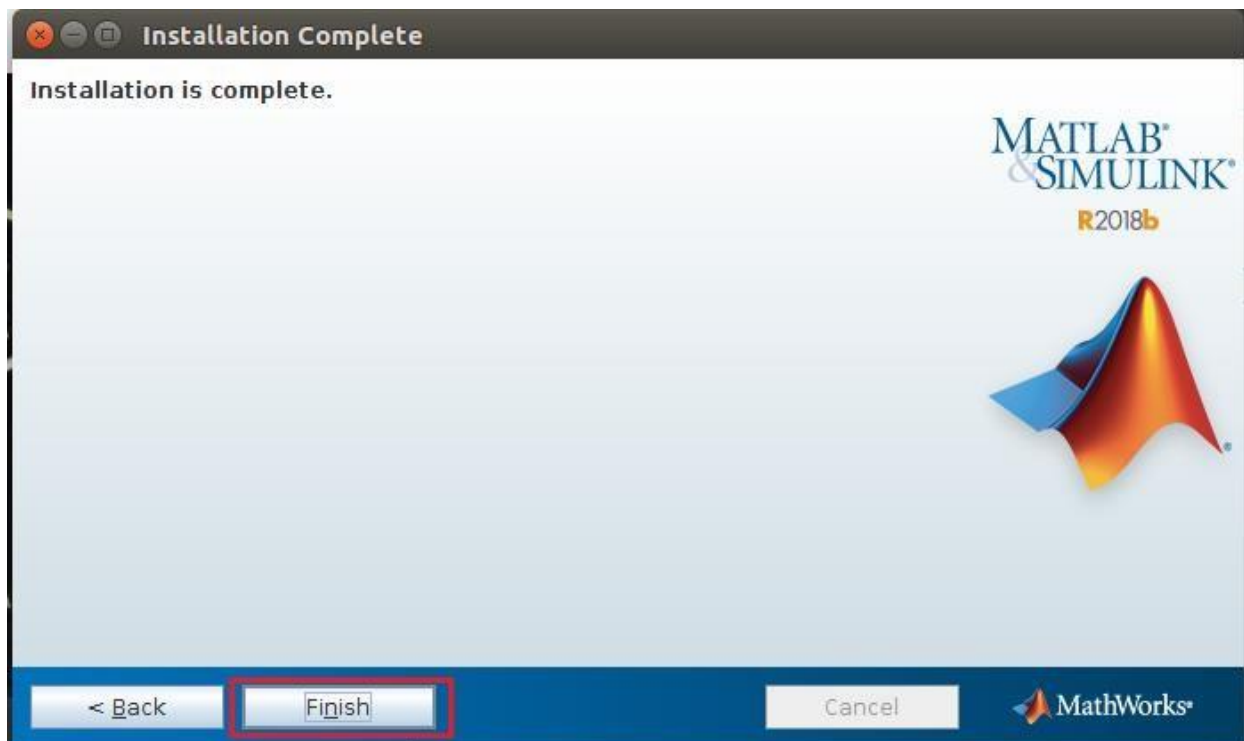
Installation in process it will take time.



Click on Next.



Click on Finish.



How to start Matlab in Linux?

Navigate to the matlab installation

directory. # cd

/usr/local/MATLAB/R2017a/bin

# sudo ./matlab

It will start the MATLAB application.