

MATLAB Installation Guide for version 2017 – Linux

Download R2017a_glnxa64.iso, License file and License key from ISTF website under Software category.

Add below entry in your host file.

```
# sudo vi /etc/hosts
```

```
10.0.137.114      WIN-M5CNITGRVDB
```

Save it.

Open the command line terminal.

Navigate to the location where iso files have been downloaded.

```
# cd /home/user/Downloads
```

Extract the R2017a_glnxa64.iso file at same location.

```
# cd /home/user/Downloads/R2017a_glnxa64
```

```
# sudo ./install
```

Select Use a File Installation Key.

Click on Next.



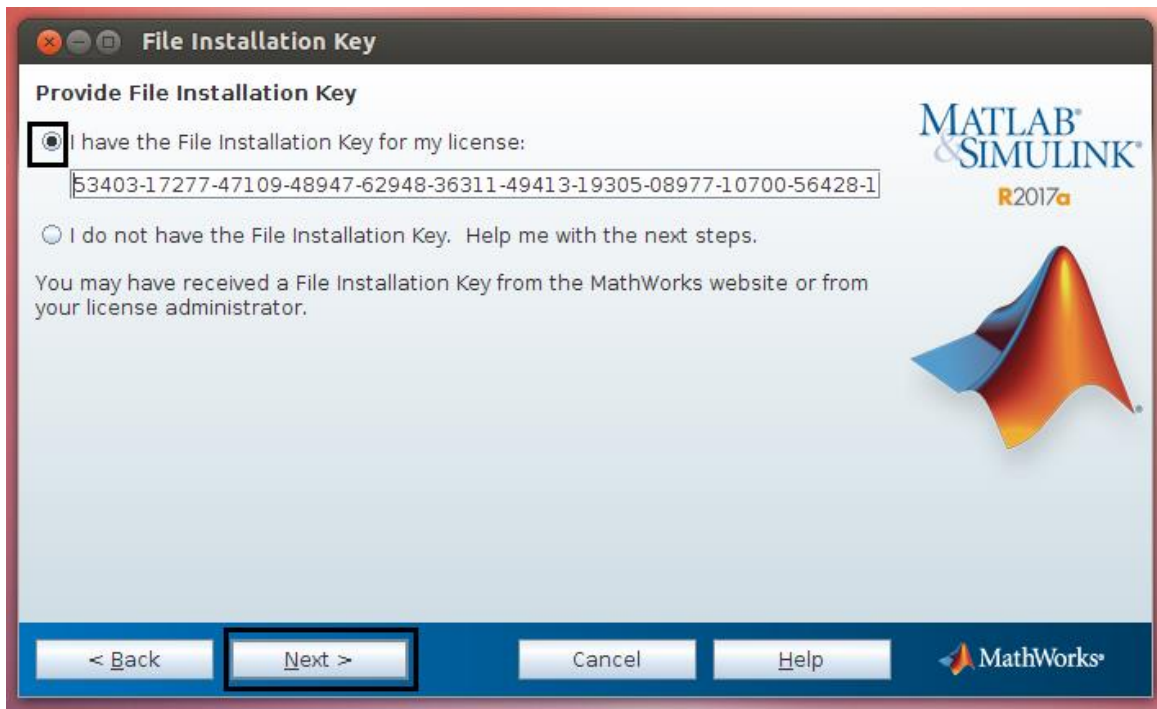
Click on Yes and Next.



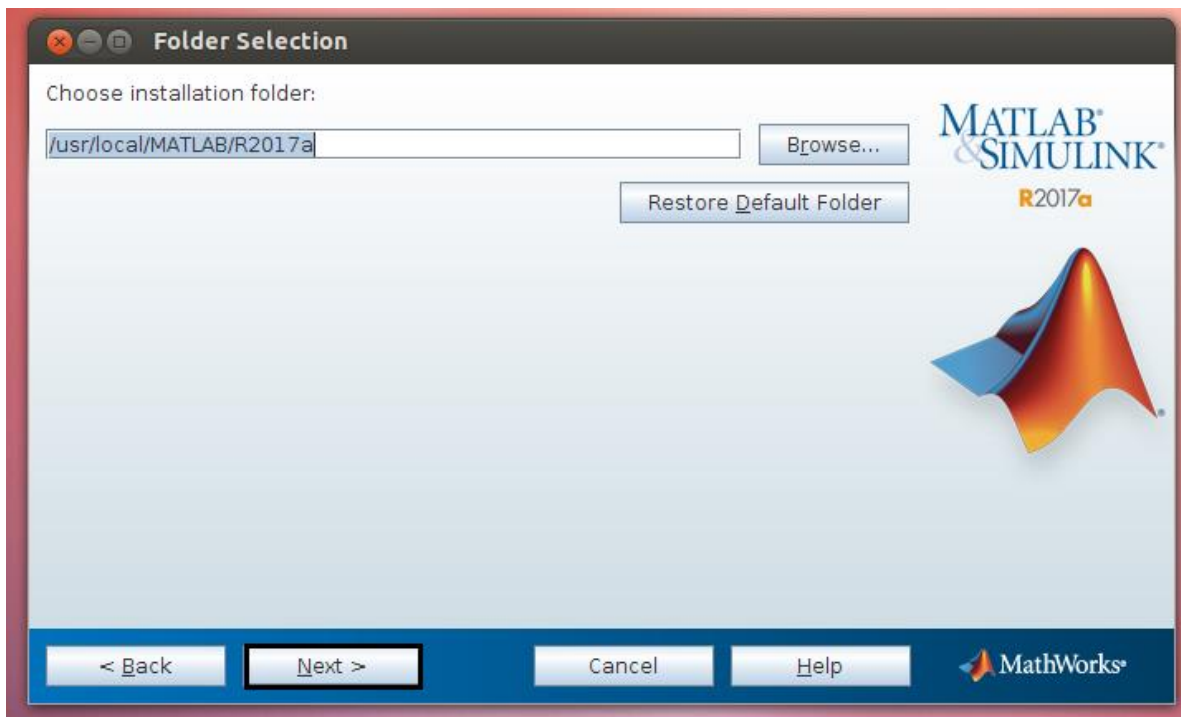
Enter License key (which is given below).

53403-17277-47109-48947-62948-36311-49413-19305-08977-10700-56428-12027-38922-30724-27984-36681-44688-58713-21738-27385-45181-08960 -

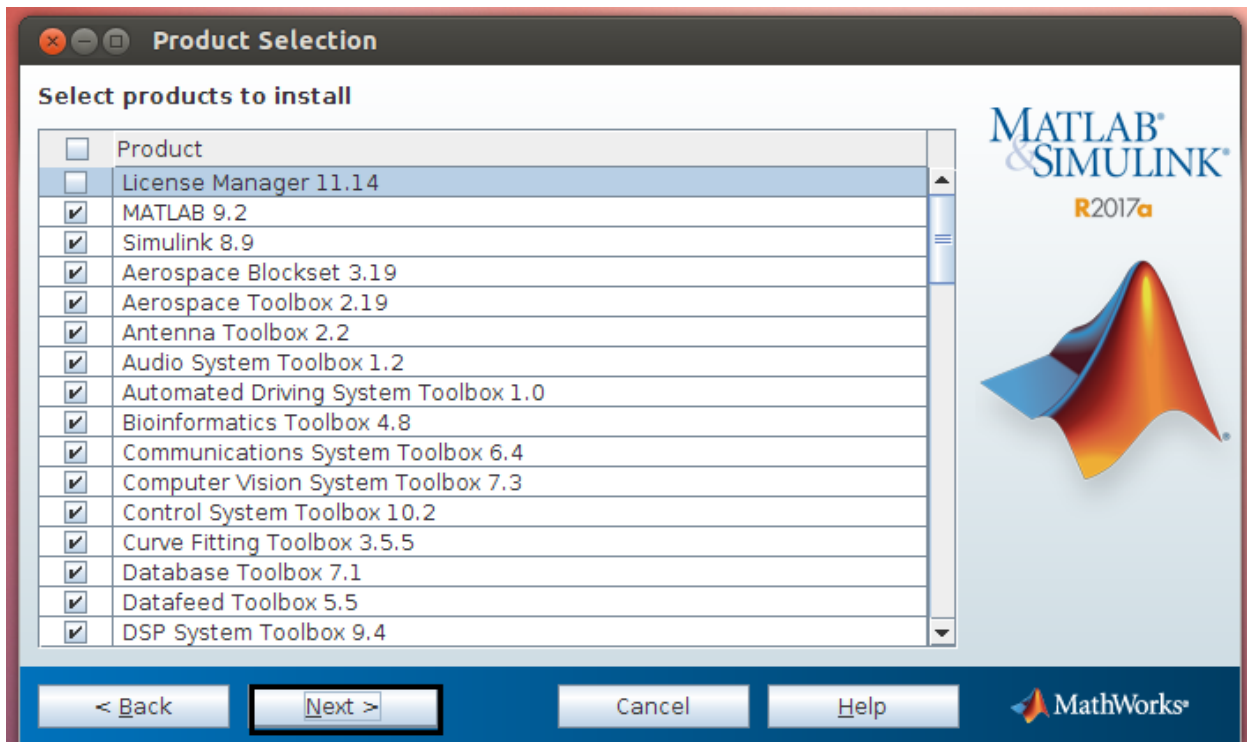
Click on Next.



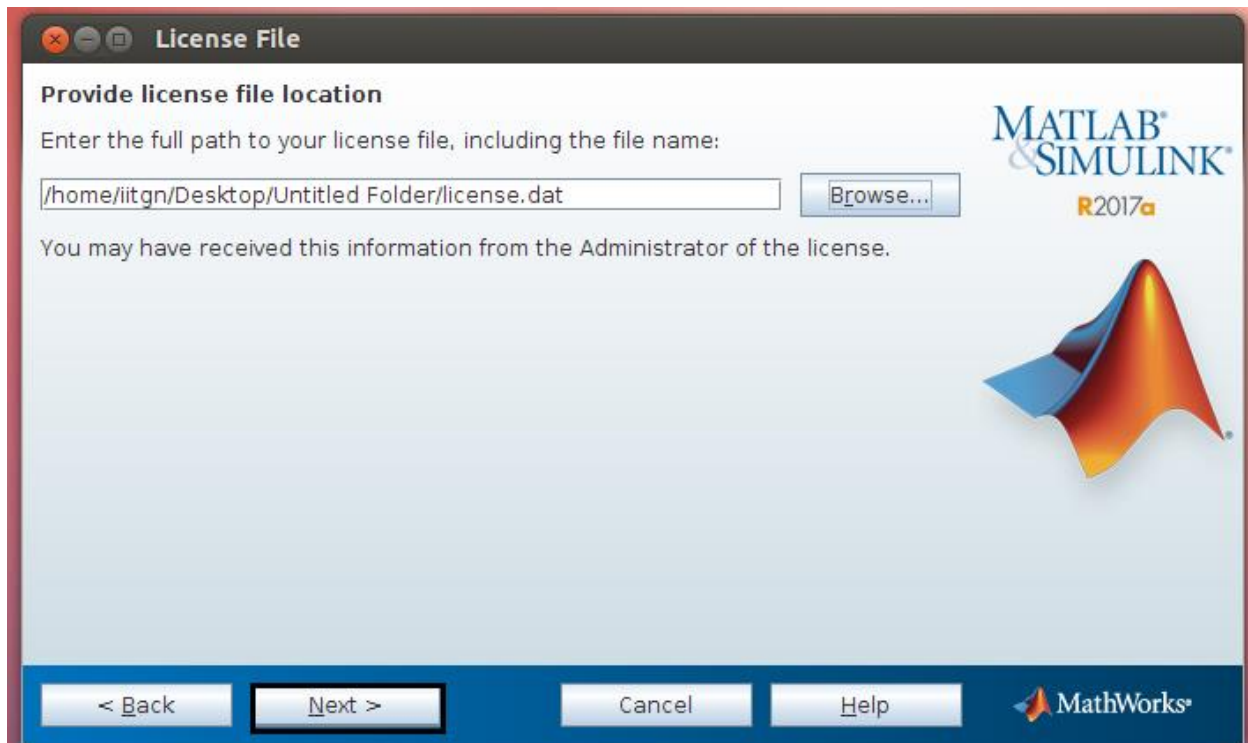
Click on Next.



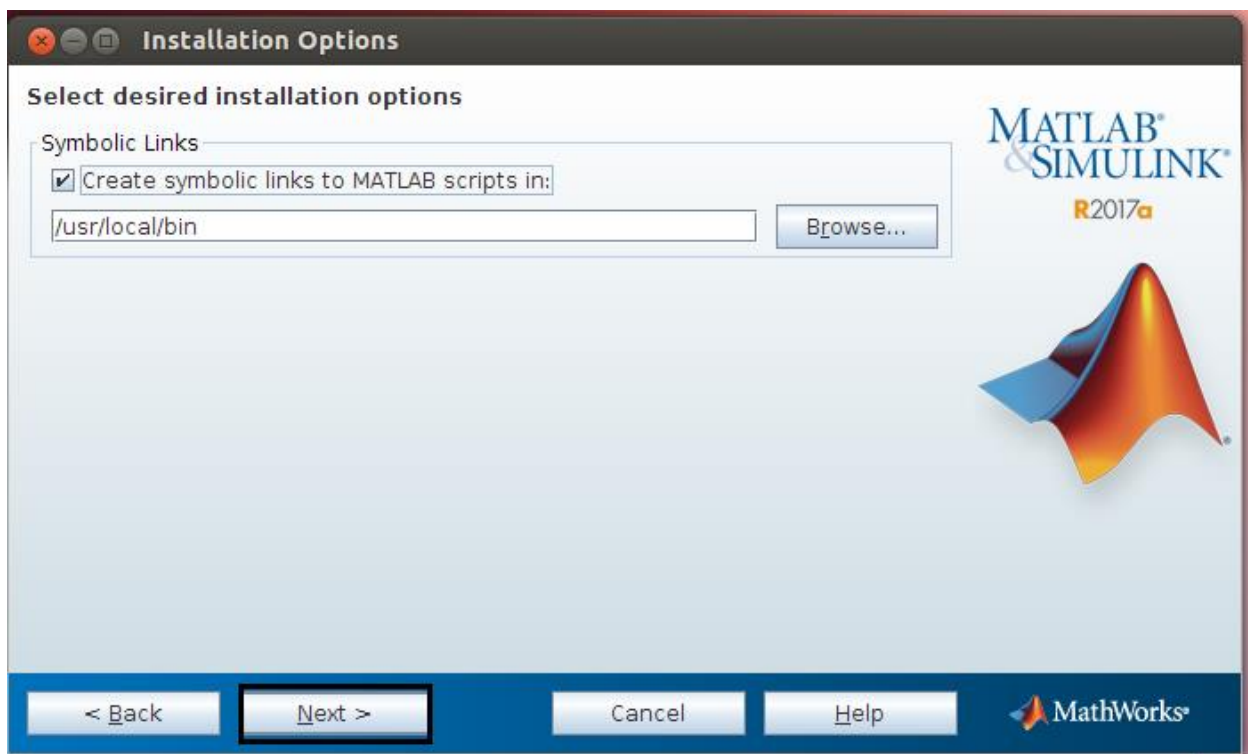
Select all Products except License Manager.



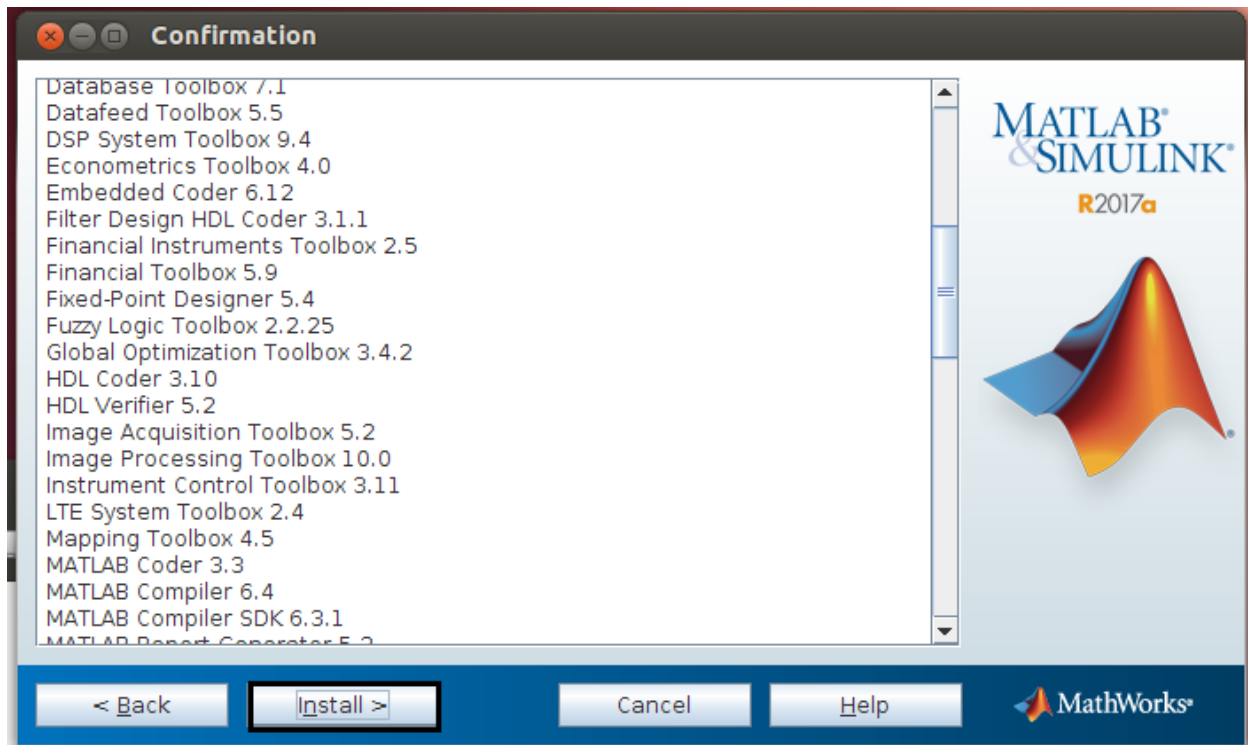
Browse the license file. (.dat file)



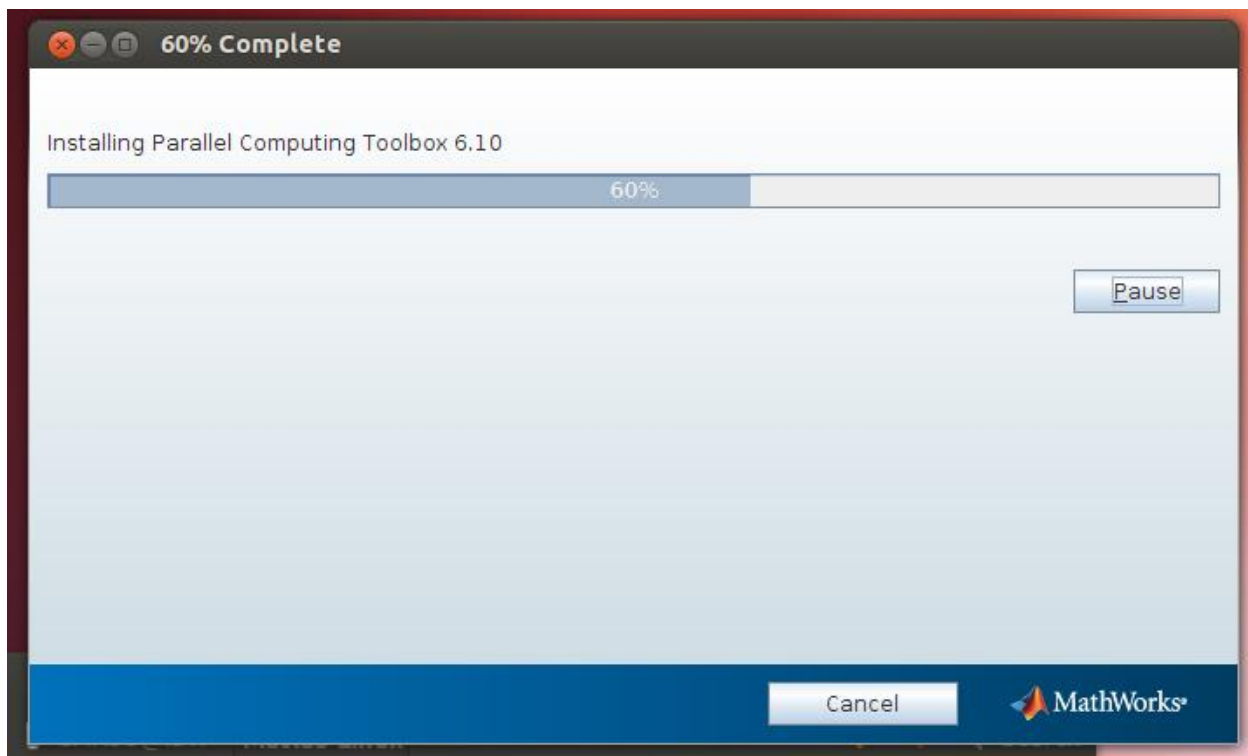
Click on Next.



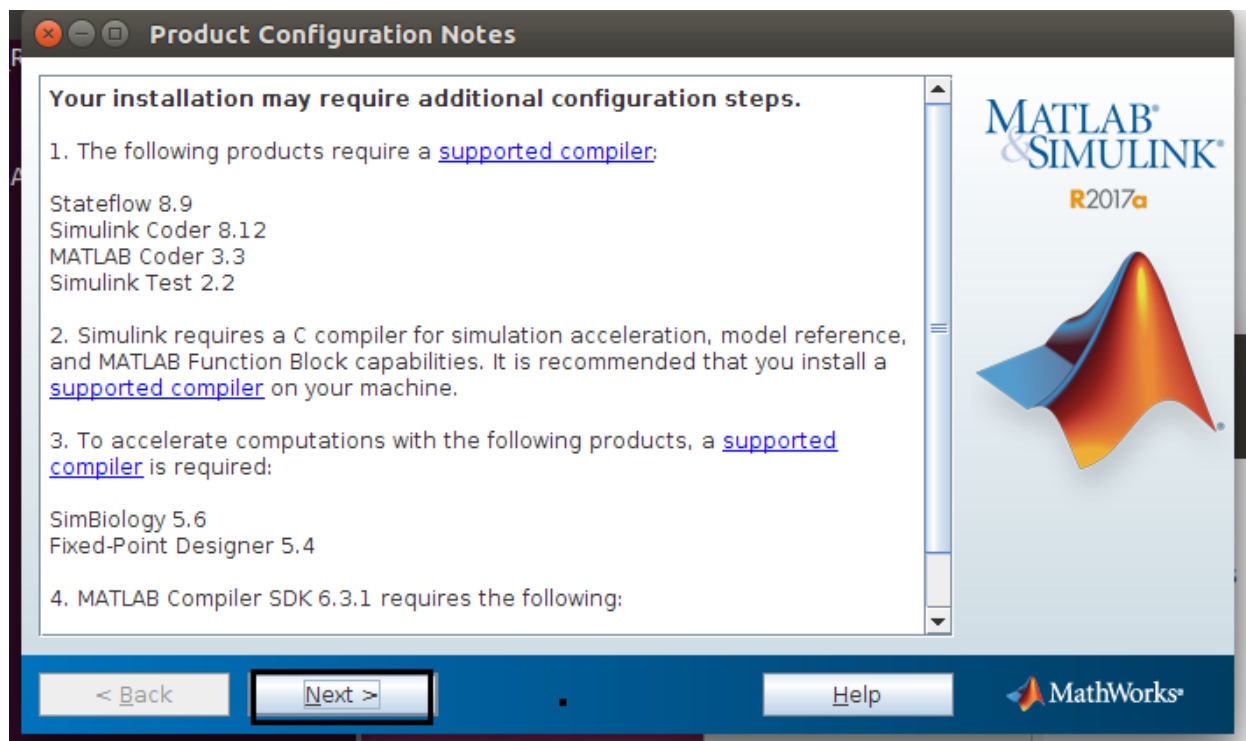
Click on Install.



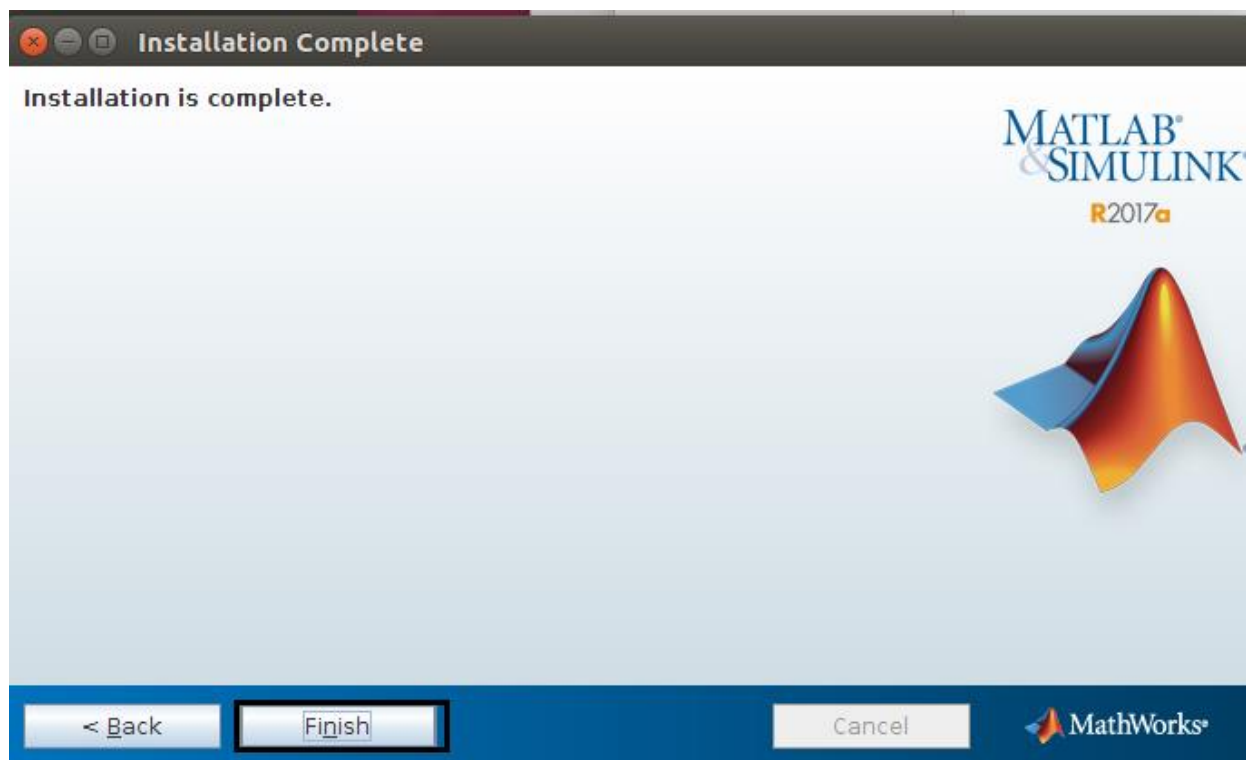
Installation in process.



Click on Next.



Click on Finish.



How to start MATLAB in linux?

Navigate to the matlab installation directory.

```
# cd /usr/local/MATLAB/R2017a/bin
```

```
# sudo ./matlab
```

It will start the MATLAB application.