

Mathematica Installation Guide – Windows

Download Mathematica_11.0.1_WIN.zip from ISTF website under Software category.

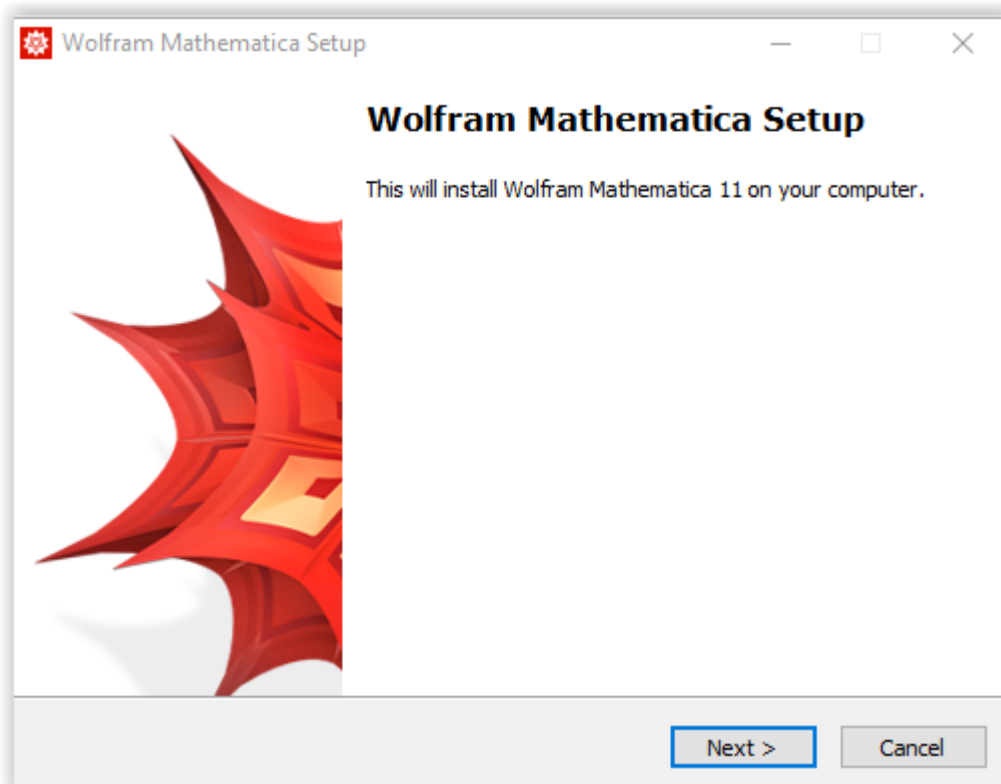
Extract the downloaded zip file on your local system.

Navigate to the location where zip has been extracted.

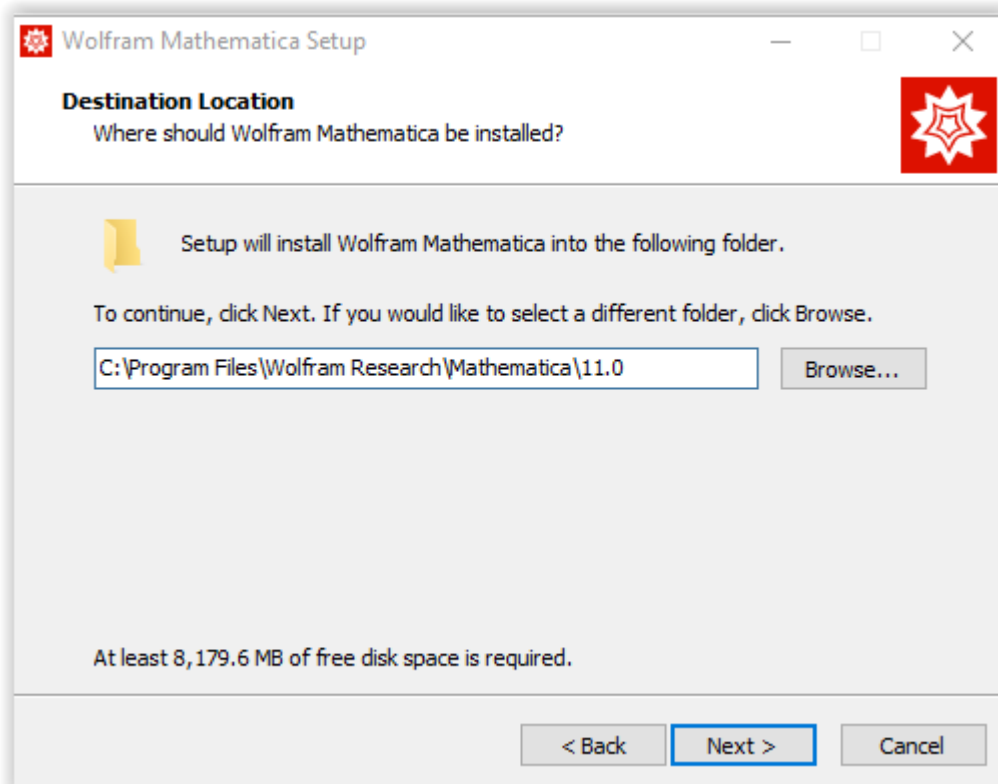
C:\Users\SP\Desktop\Mathematica_11.0.1_WIN

Run the setup.exe with administrator privileges.

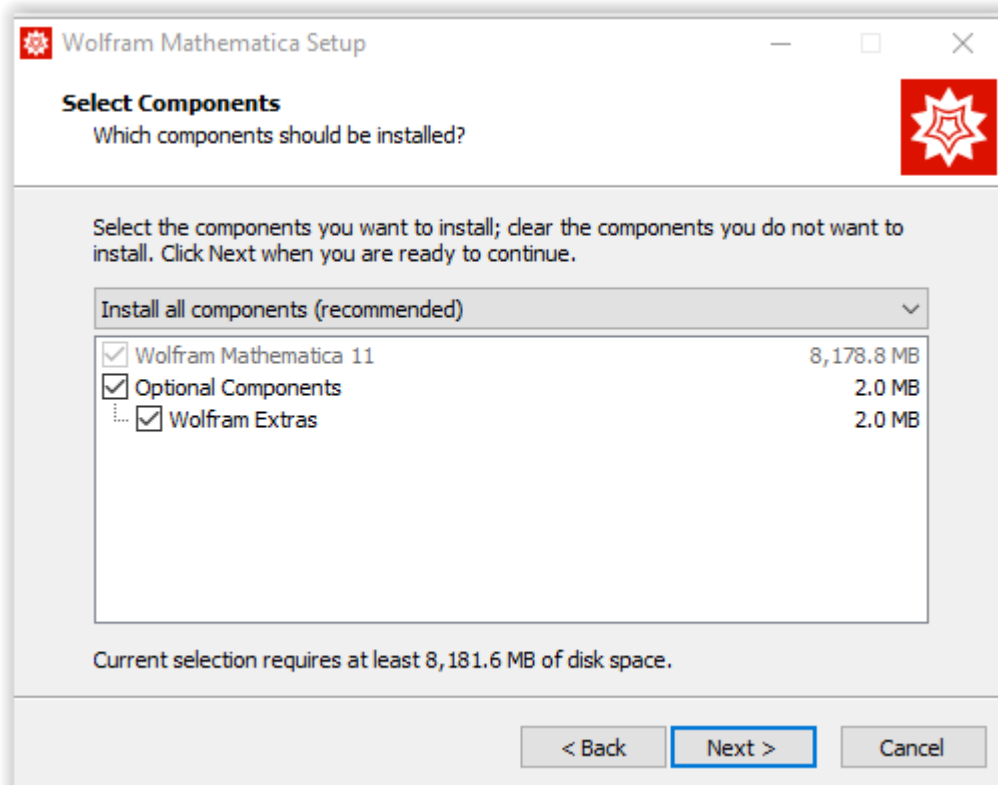
Click on Next.



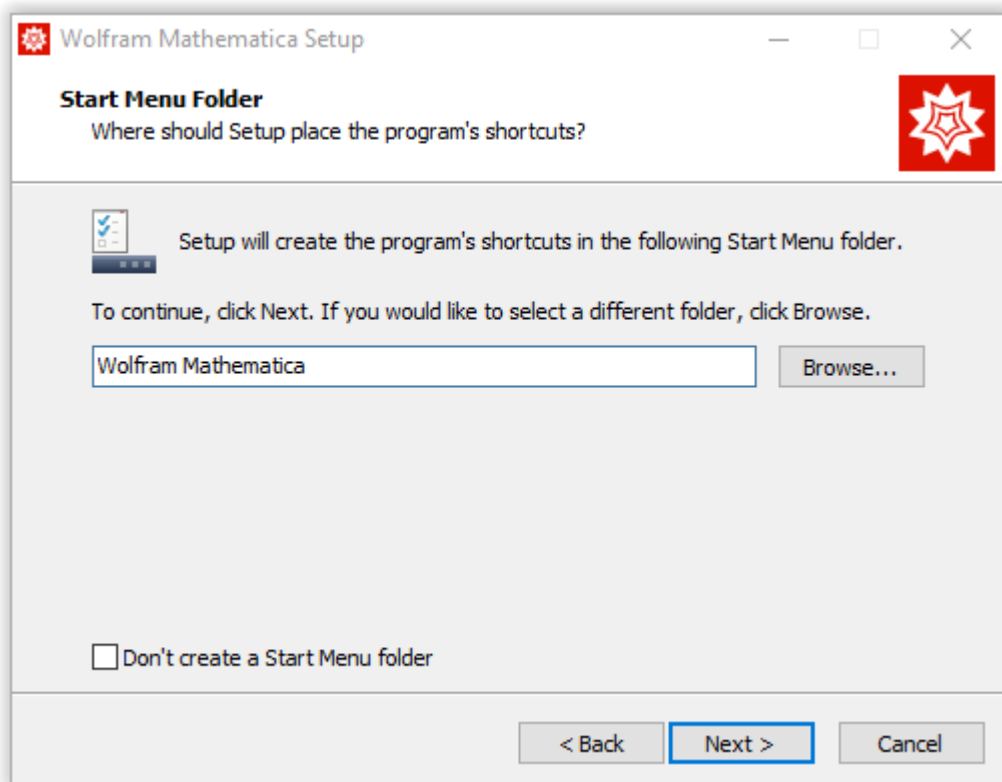
Click on Next.



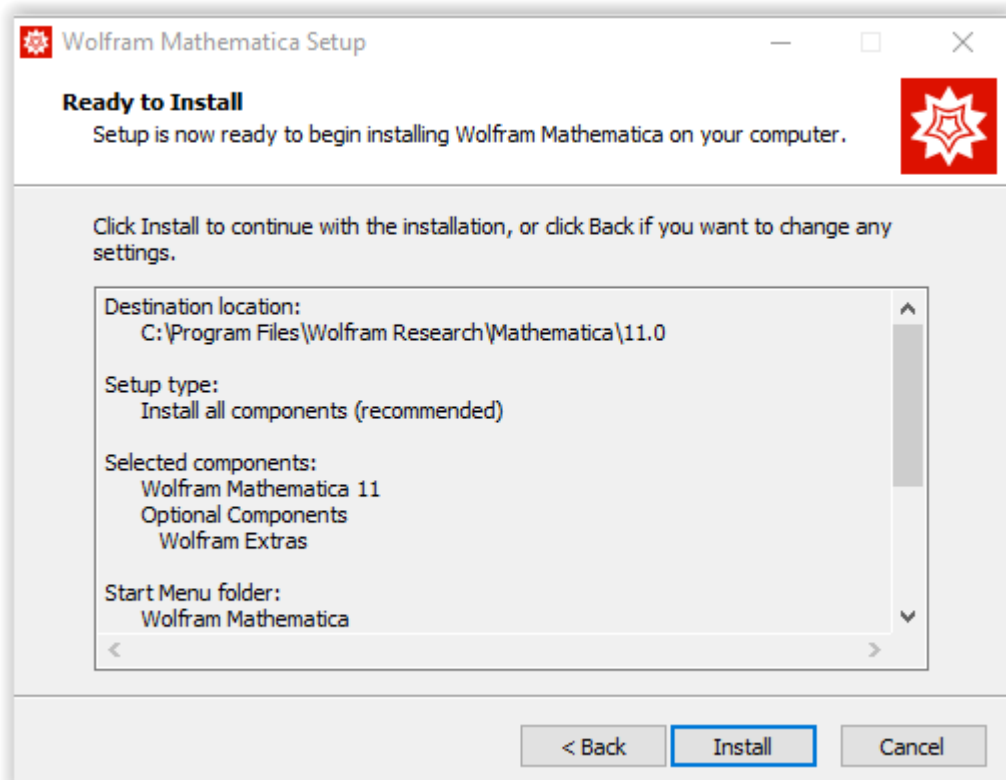
Click on Next.



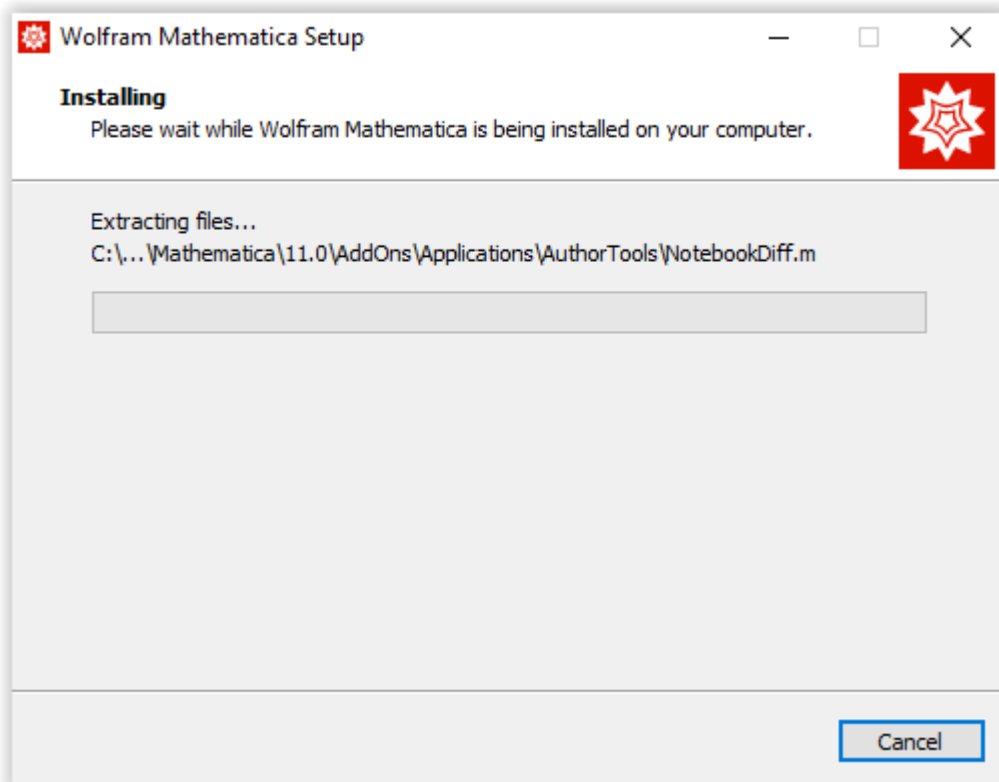
Click on Next.



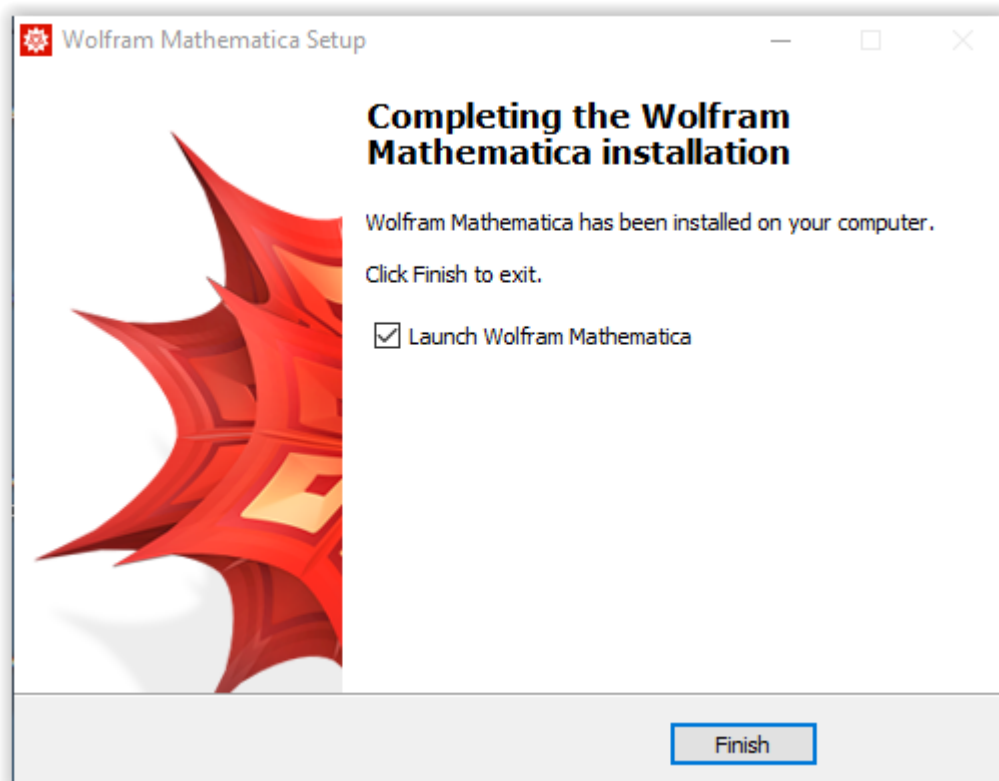
Click on Install.



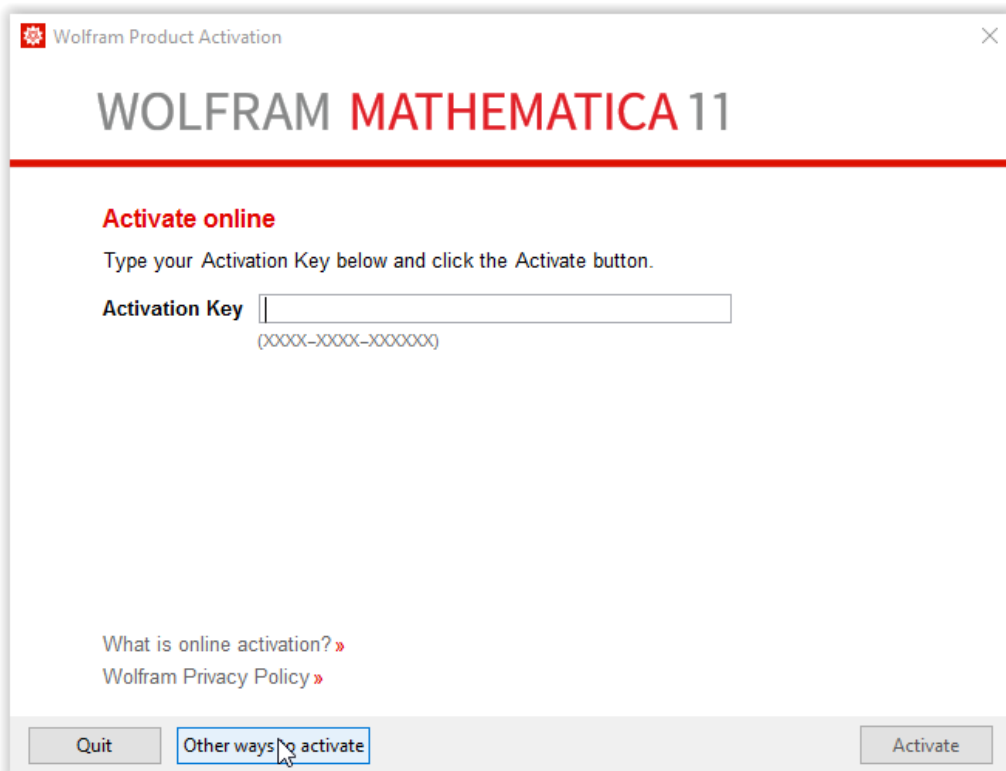
Installation is in progress wait for its completion.



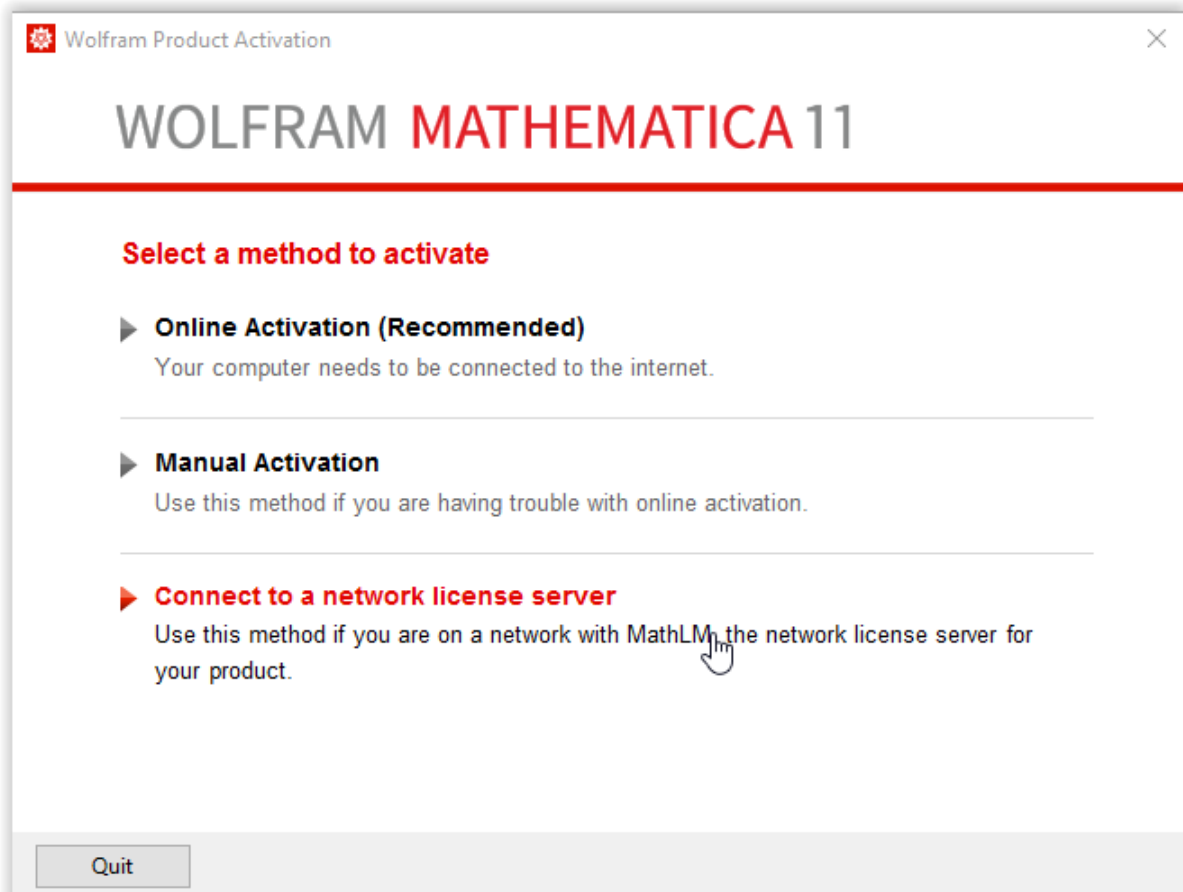
Click on Finish.



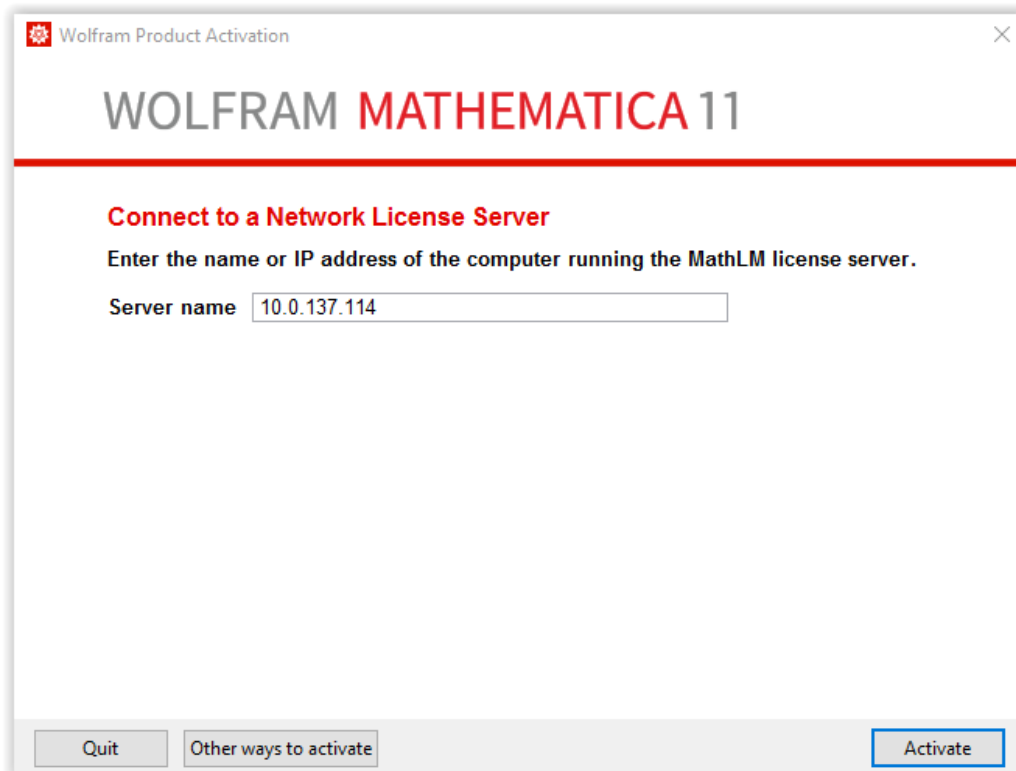
Click on “Other ways to activate”.



Select “Connect to a network license server”.



Enter Licenser server IP Address: 10.0.137.114



Select "I

accept the terms of this agreement" and click on OK.

