

## How to Install SAP2000v2010Setup64

Add below entry in your host file.

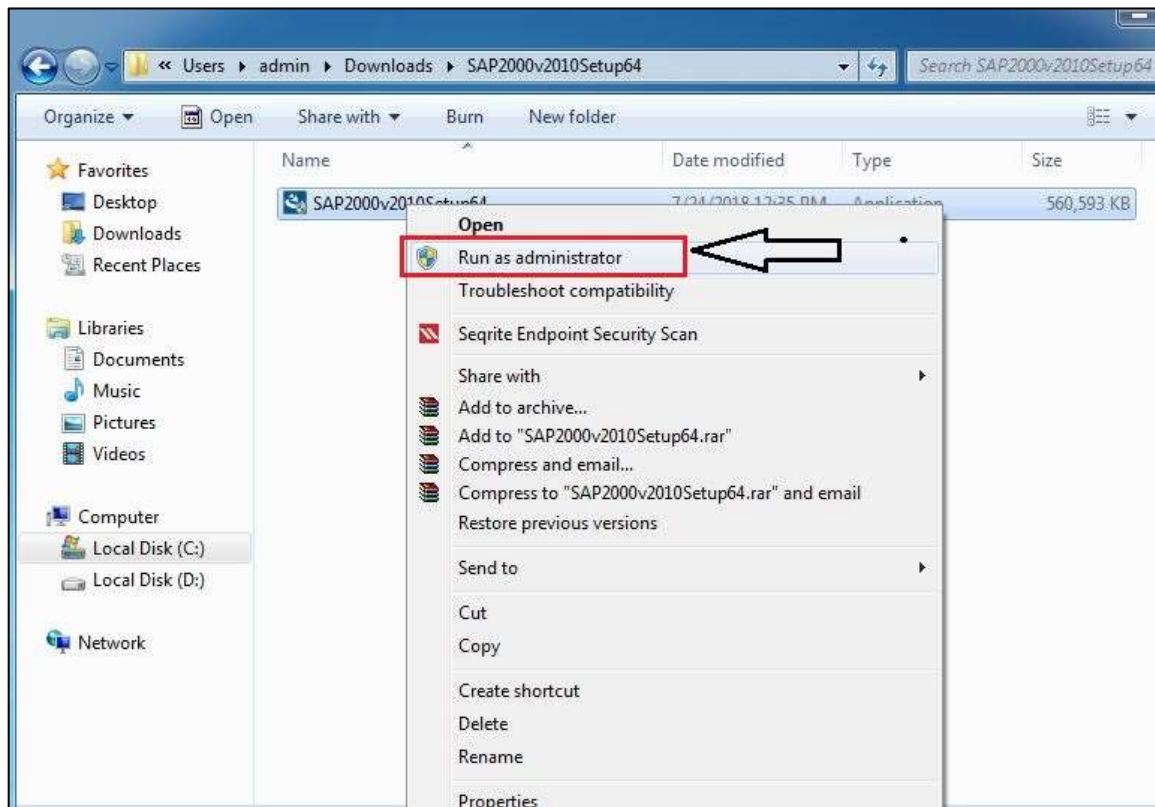
```
# C:\WINDOWS\System32\drivers\etc\hosts
```

```
10.0.137.115    comp48
```

Save it.

Download SAP2000v2010Setup64.zip, Imhost.ini from ISTF website under Software category. Extract the downloaded SAP2000v2010Setup64.zip

Click on SAP2000 Setup File



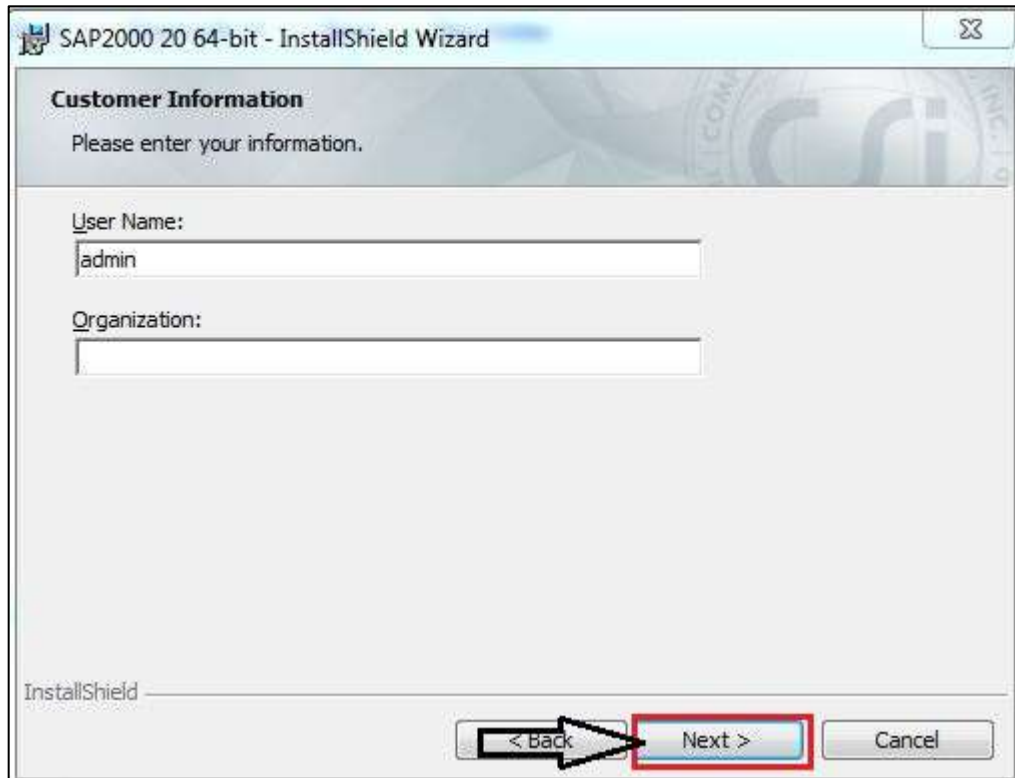
Click on Next.



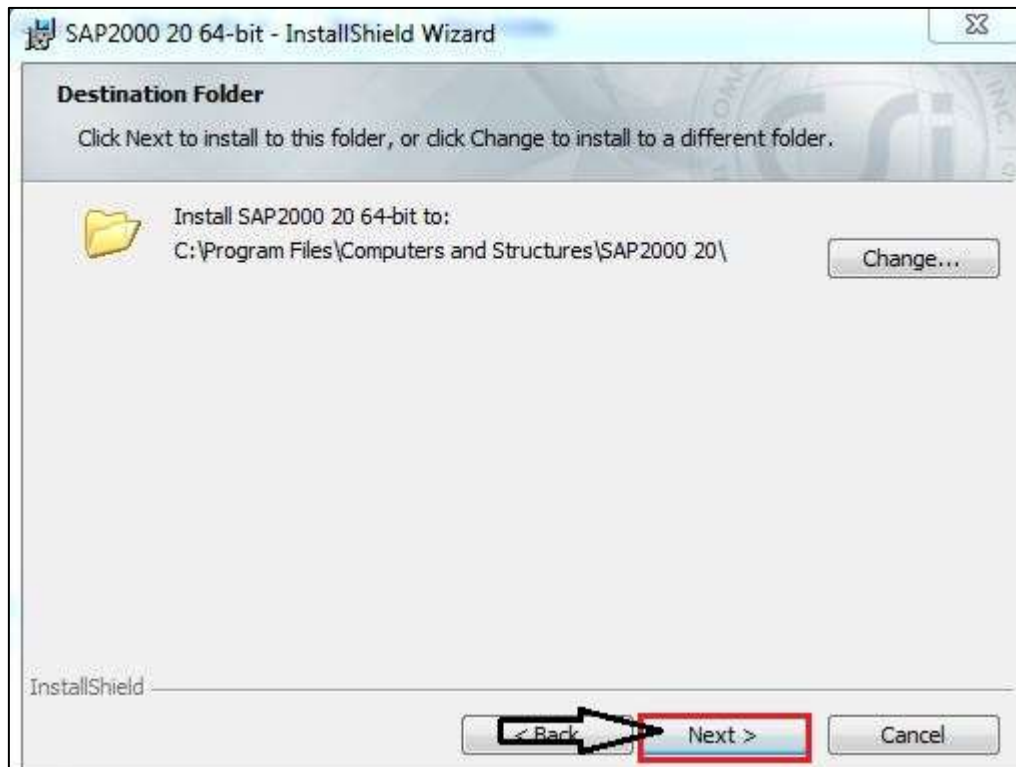
Select License Agreement and Click on Next.



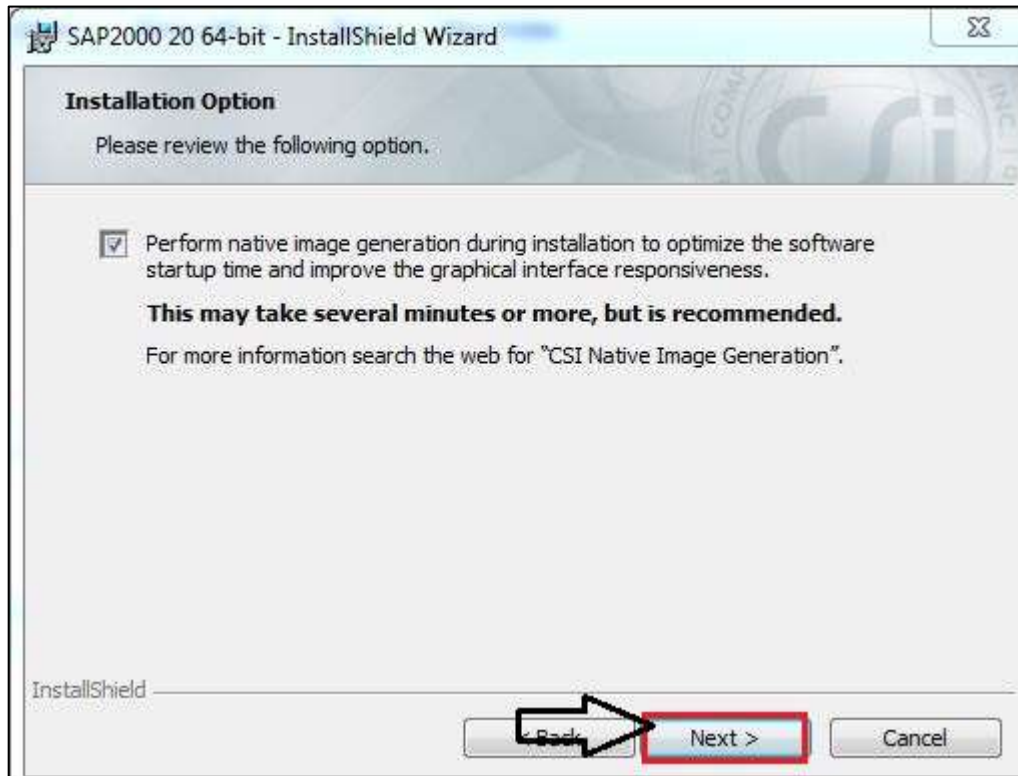
Click on Next.



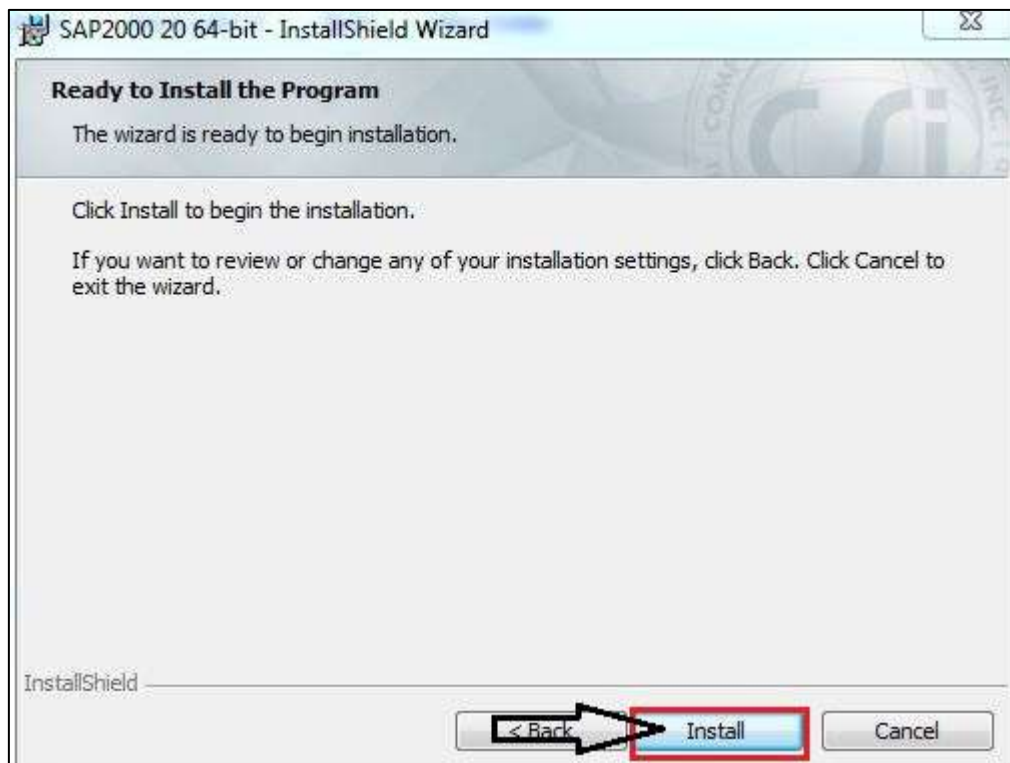
Click on Next.



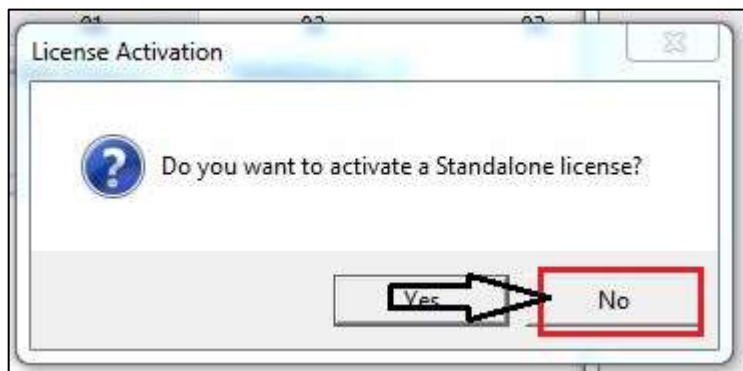
Click on Next.



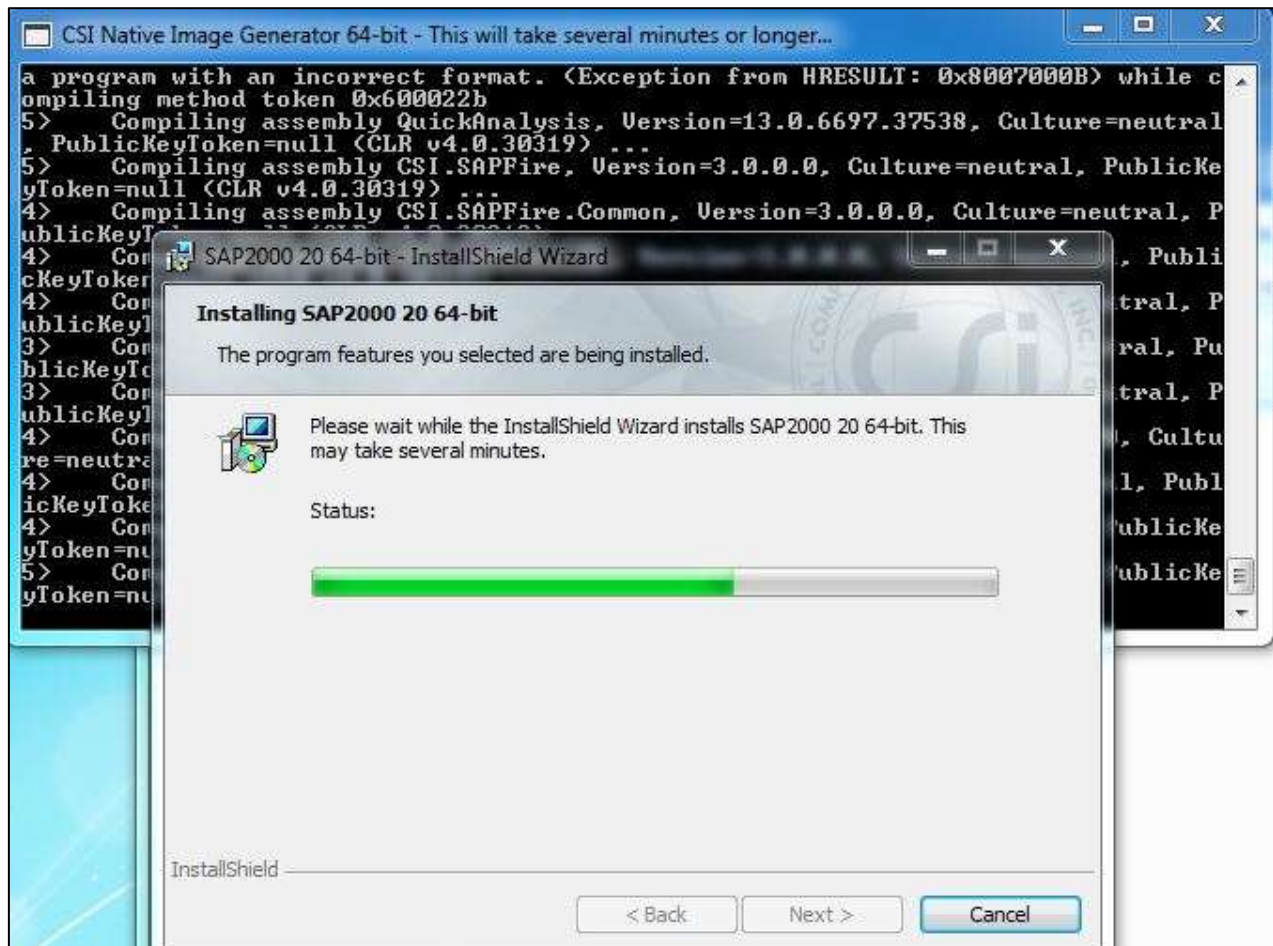
Click on Install.



Click on No.



Installation is started and it will take some time.



Click on Finish.



**Important Note:**

Once the installation has been finished, go the location "[C:\Program Files\Computers and Structures\SAP2000 20\SAP2000.exe](#)", delete Imhost.ini file, and paste the Imhost.ini file, which you have downloaded from ISTF website. Now, you can use the application.