

## STAR-CCM+ Installation Guide – Linux

Download STAR-CCM+\*.bin from ISTF website under Software category.

Create .flexlmrc (hidden) file in your home directory and add content as given below.

**Note:** Don't use “#” in your command line terminal.

```
# cd ~
```

```
# touch .flexlmrc
```

```
# echo "CDLMD_LICENSE_FILE=2000@10.0.137.114" > .flexlmrc
```

```
# cat .flexlmrc
```

```
# chmod 755 .flexlmrc
```

Navigate to the location where \*.bin file has been downloaded.

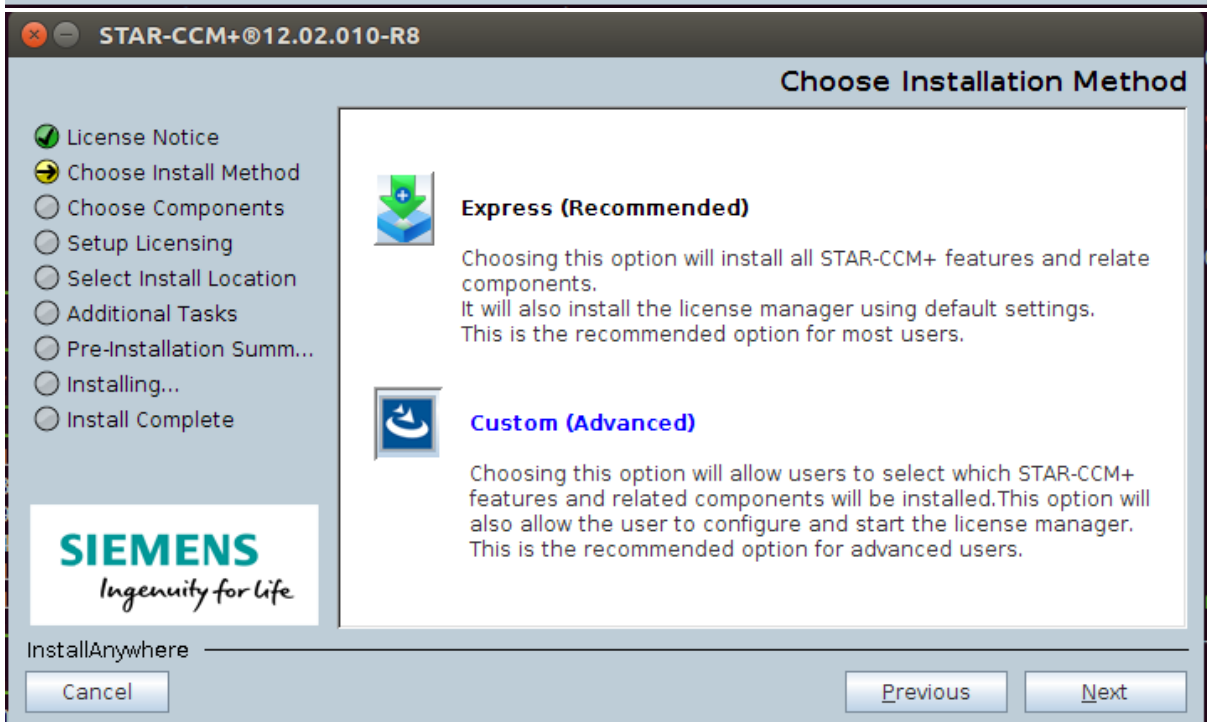
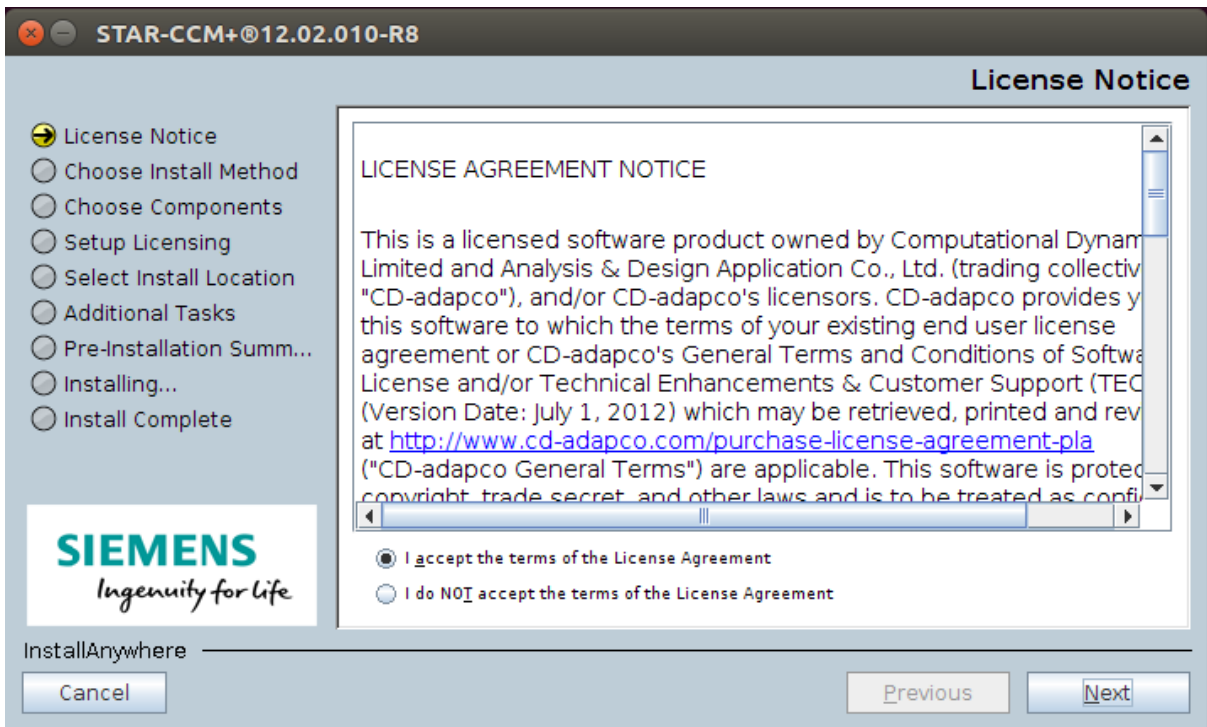
```
# cd /home/XXXXX/Downloads
```

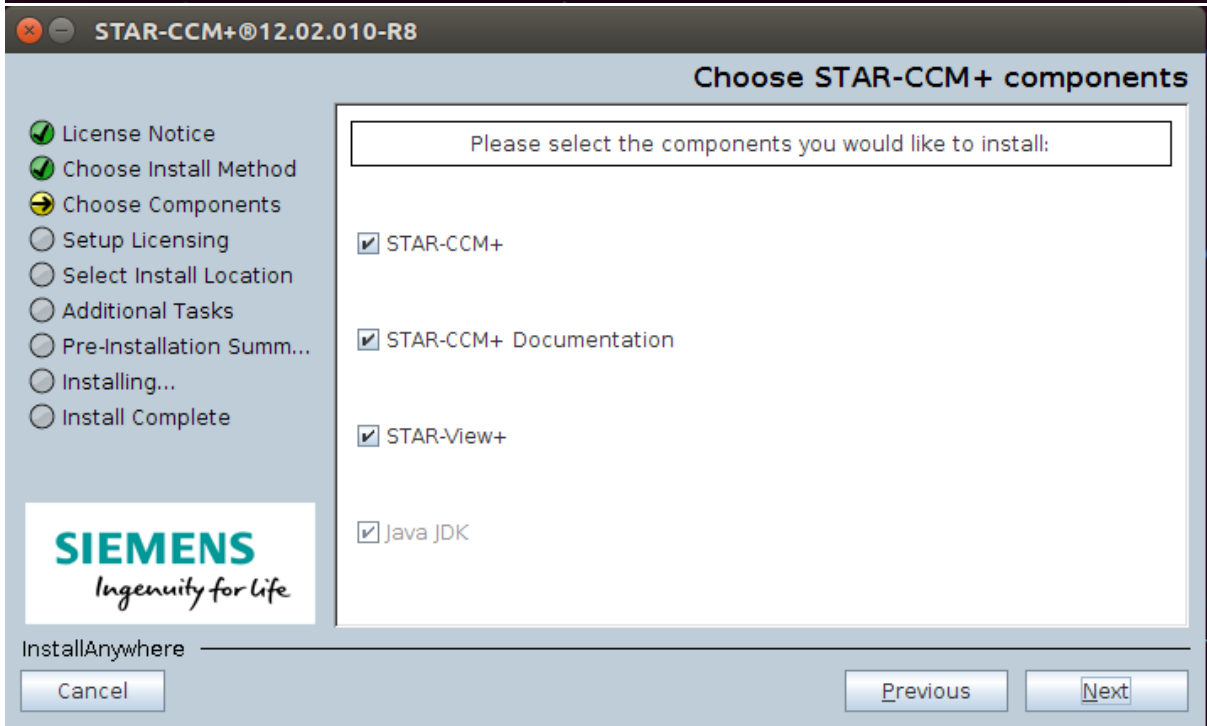
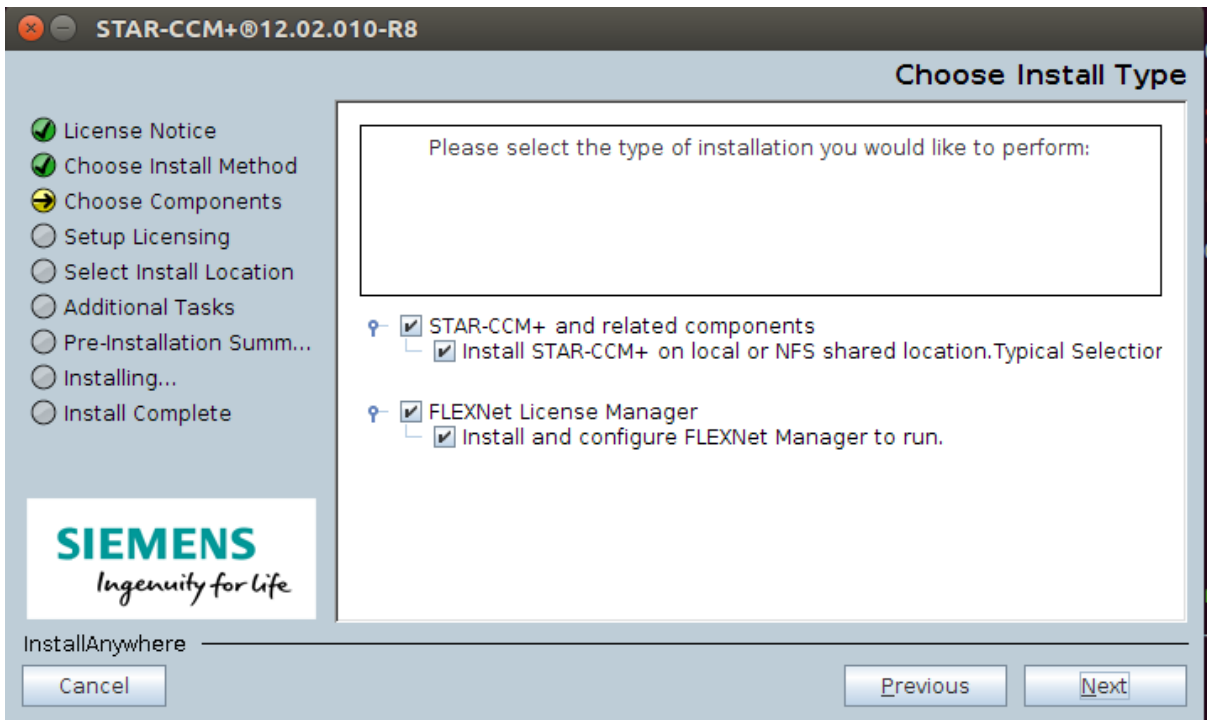
Run the STAR-CCM+\*.bin file with sudo permission

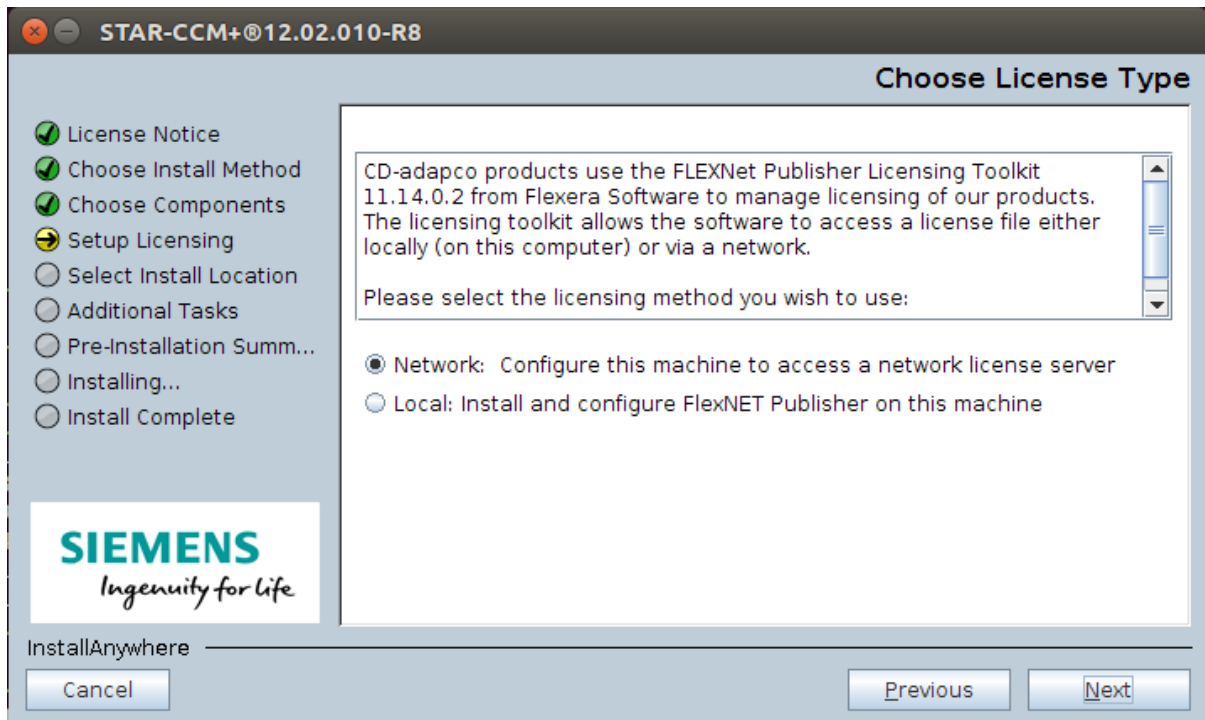
```
# sudo ./STAR-CCM+11.06.010_02_linux-x86_64-2.5_gnu4.8-r8.bin - (For version 11.06.010)
```

```
# sudo ./STAR-CCM+12.02.010_01_linux-x86_64-2.5_gnu4.8-r8.bin - (For version 12.02.010)
```

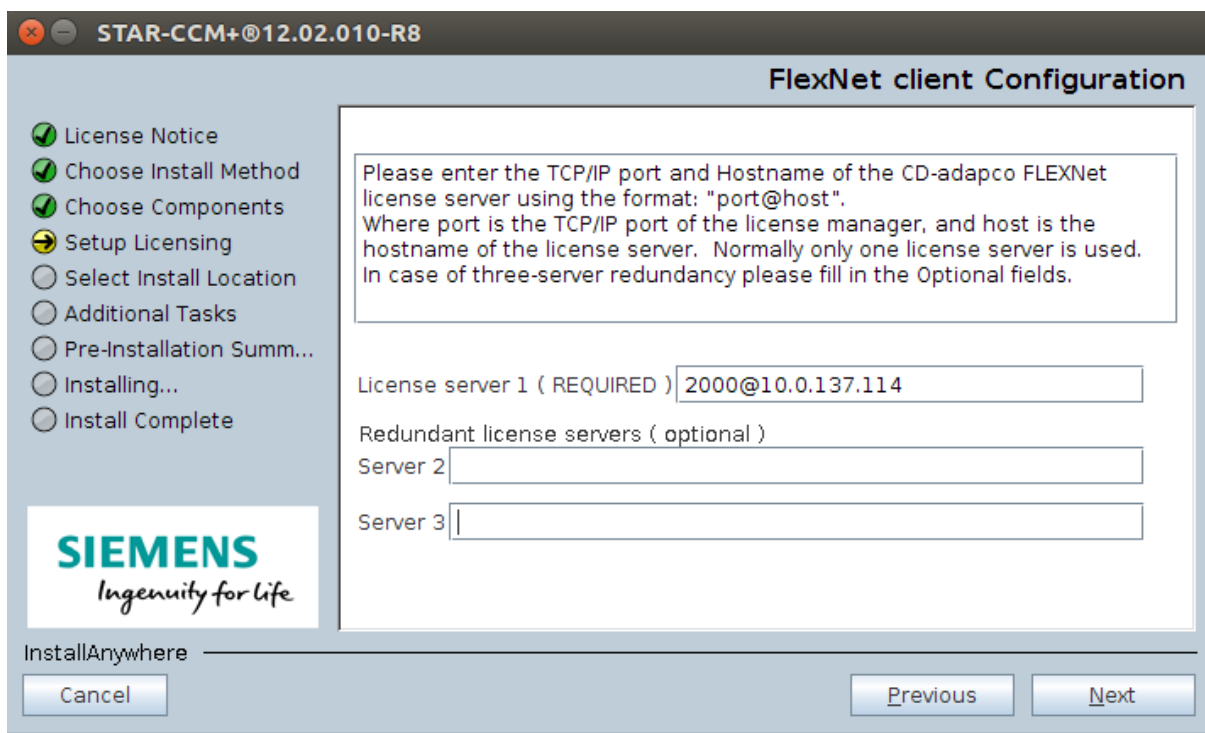
Follow the below given screen shot to complete the installation.

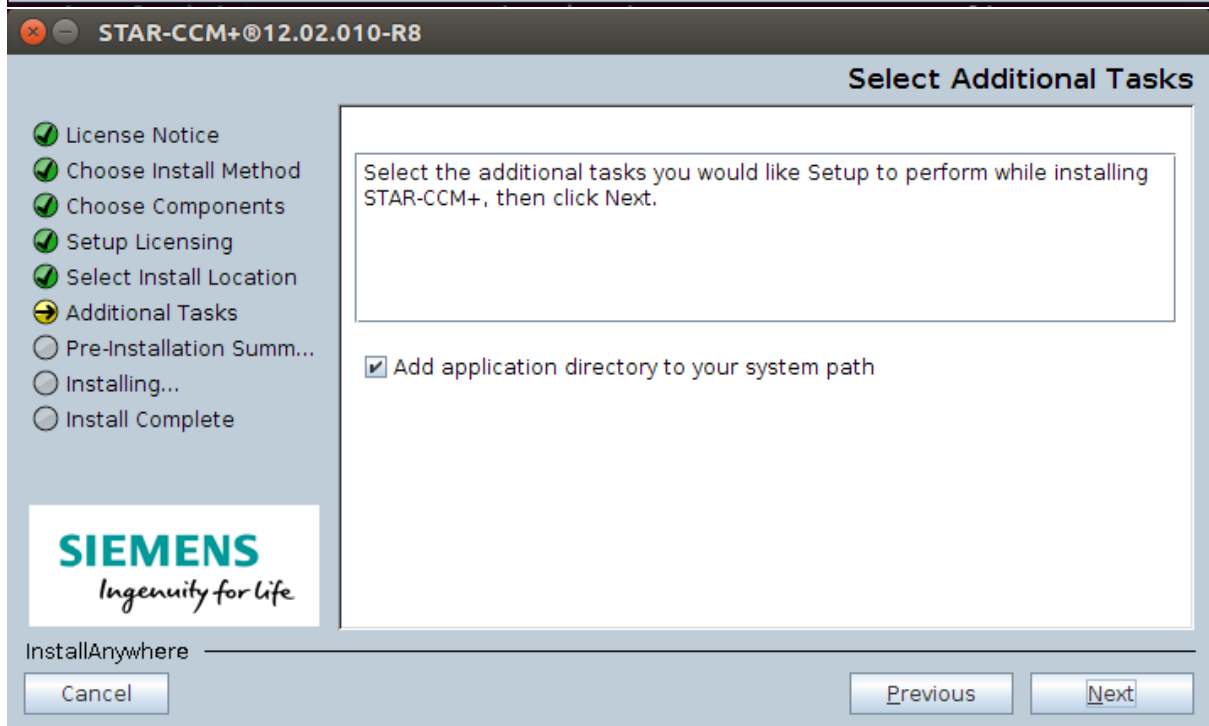
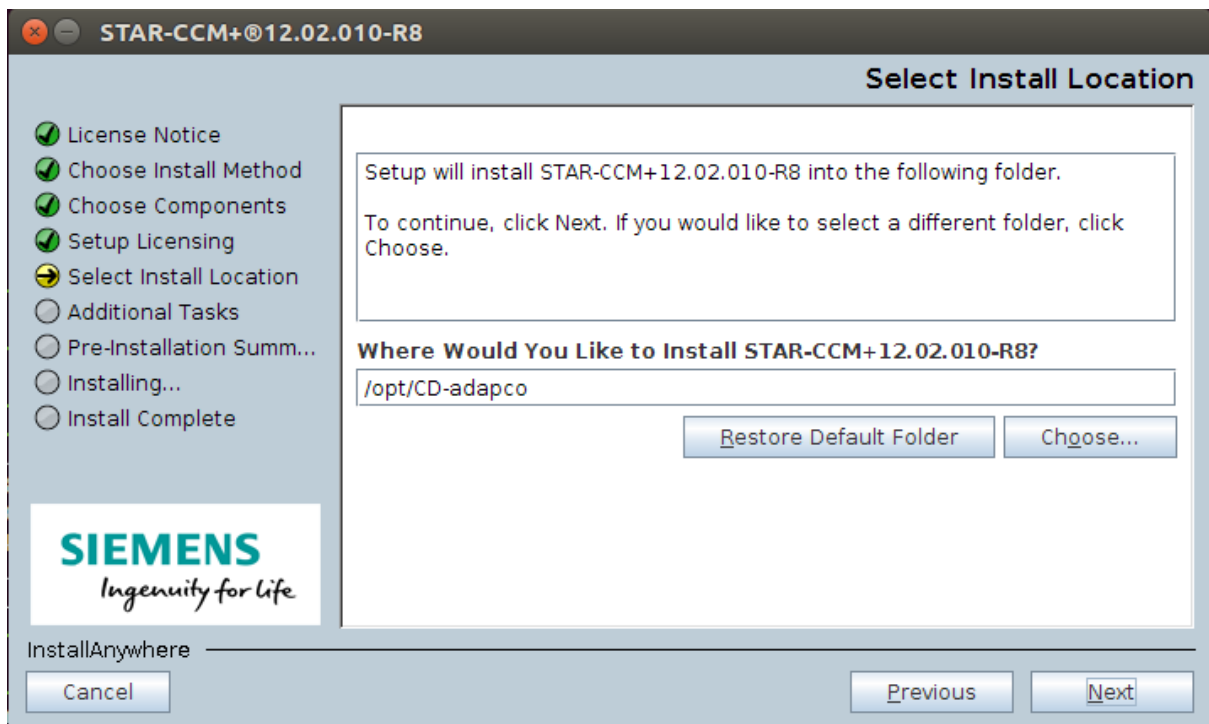


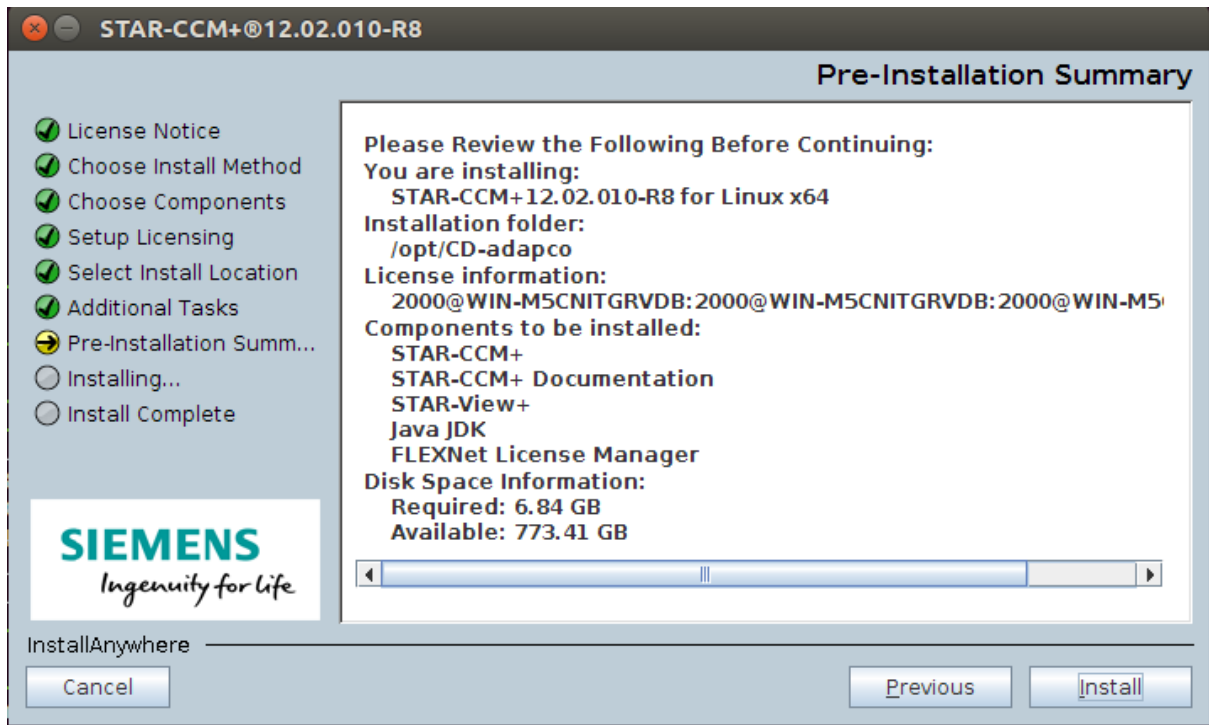




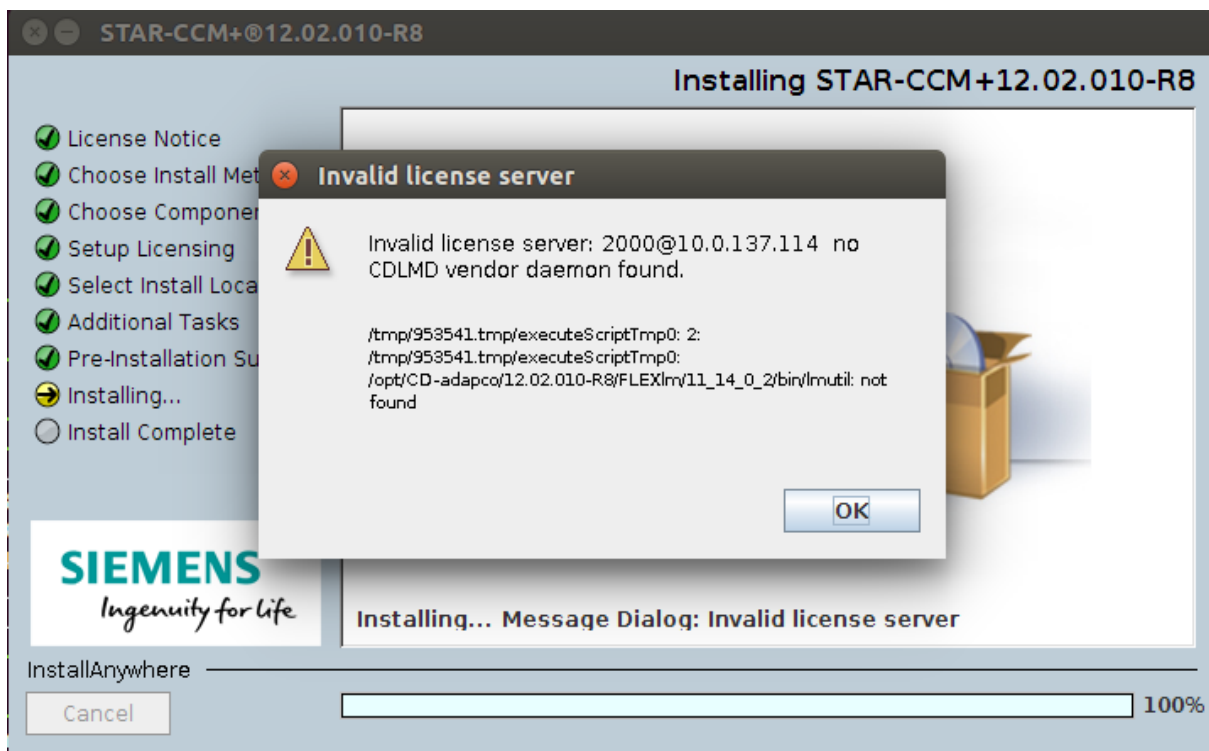
Remove entry form Server 2 and Serve 3.

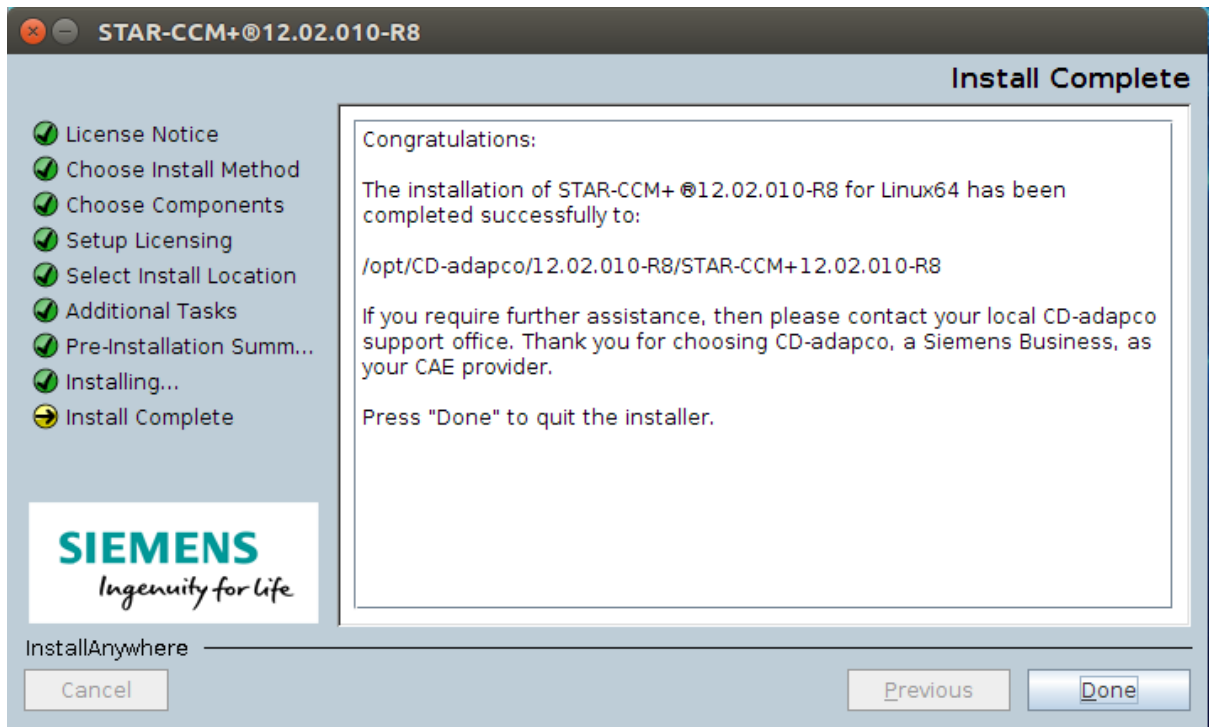






Click on "OK".





Now, start the STAR-CCM+.

```
# cd /PATH-TO-INSTALLATION-DIRECTORY/CD-adapco/12.02.010-R8/STAR-CCM+12.02.010-R8/star/bin - (For version 12.02.010)
```

```
# cd /PATH-TO-INSTALLATION-DIRECTORY/CD-adapco/11.06.010-R8/STAR-CCM+11.06.010-R8/star/bin - (For version 11.06.010)
```

```
# ./starccm+
```